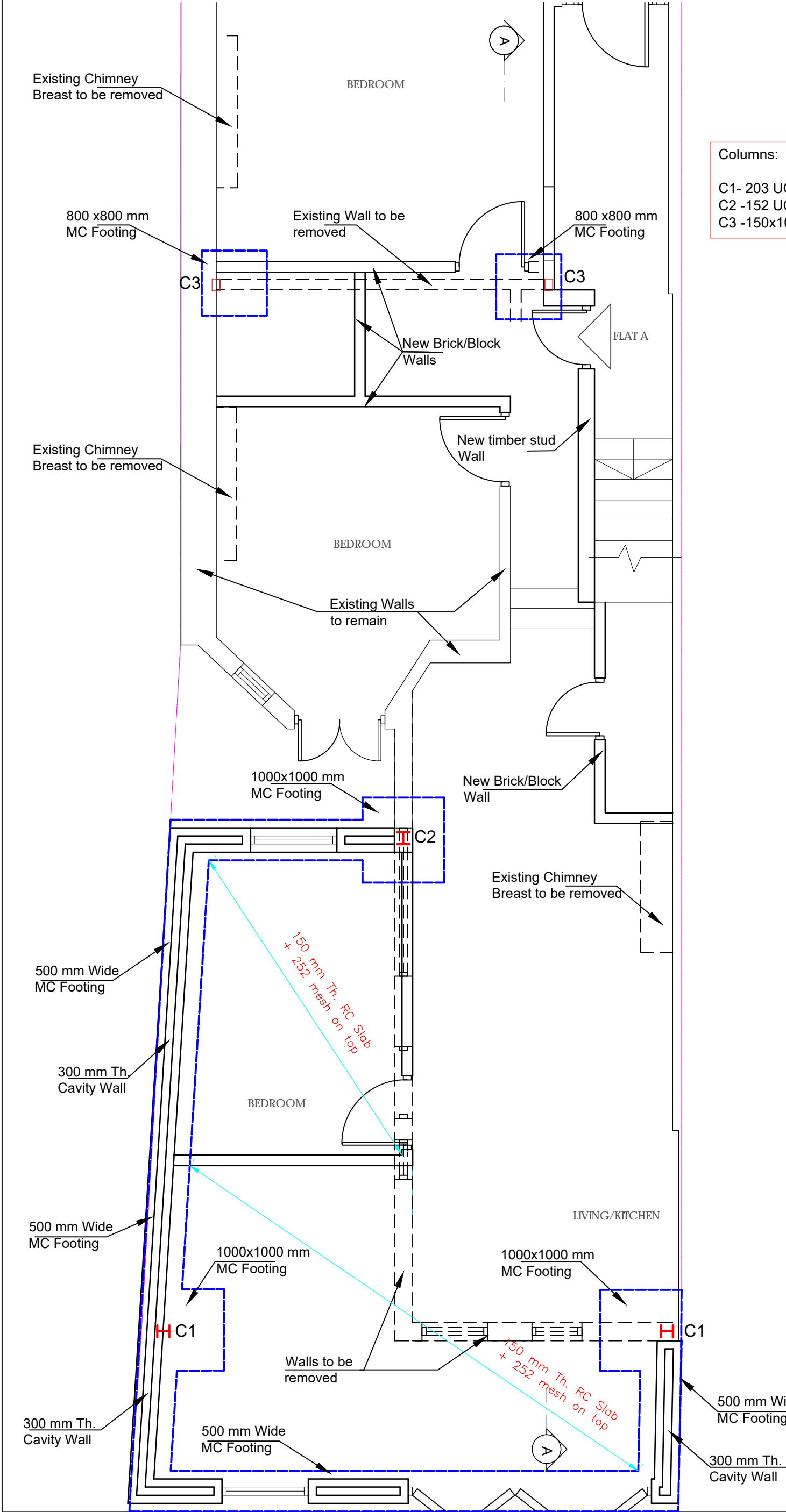


Notes:
For general notes see GN1

Columns:
C1- 203 UC 46
C2 -152 UC 37
C3 -150x100x5 RHS



Ground Floor Plan
0m 1 2 3 4

Issued For
Construction


General Notes
DO NOT SCALE FROM THIS DRAWING. ALL DIMENSIONS TO BE VERIFIED ON SITE BY CONTRACTOR PRIOR TO COMMENCEMENT OF ANY SHOP DRAWINGS AND ANY WORK ON SITE. REPORT ALL DISCREPANCIES TO THE ARCHITECT/ENGINEER IMMEDIATELY. THIS DRAWING IS TO BE READ IN CONJUNCTION WITH ALL RELATED ARCHITECT/ENGINEERS DRAWINGS / DETAILS AND ALL OTHER RELEVANT INFORMATION.

Notes

Client
Project
Fort Garry, Harlesden Rd. London NW10 3RQ

Drawing Title
GROUND FLOOR PLAN

Scale Date


LIM ENGINEERING LTD
consulting engineers

15 Kinloch Drive, London NW9 7LL - Tel: 0208 205 14 Fax: 0208 205 1427

Job No. Drawing No.
1

Notes:

For general notes see GN1

BEAM SCHEDULE:

- B1 - 254 UC 89 + 6 mm Th. Steel Plate Above
- B2 - 254 UC 107 +6 mm Th. Steel Plate Above where required
- B3 -152 UC 37 +6 mm Th. Steel Plate Above where required
- B4 - 152 UC 37

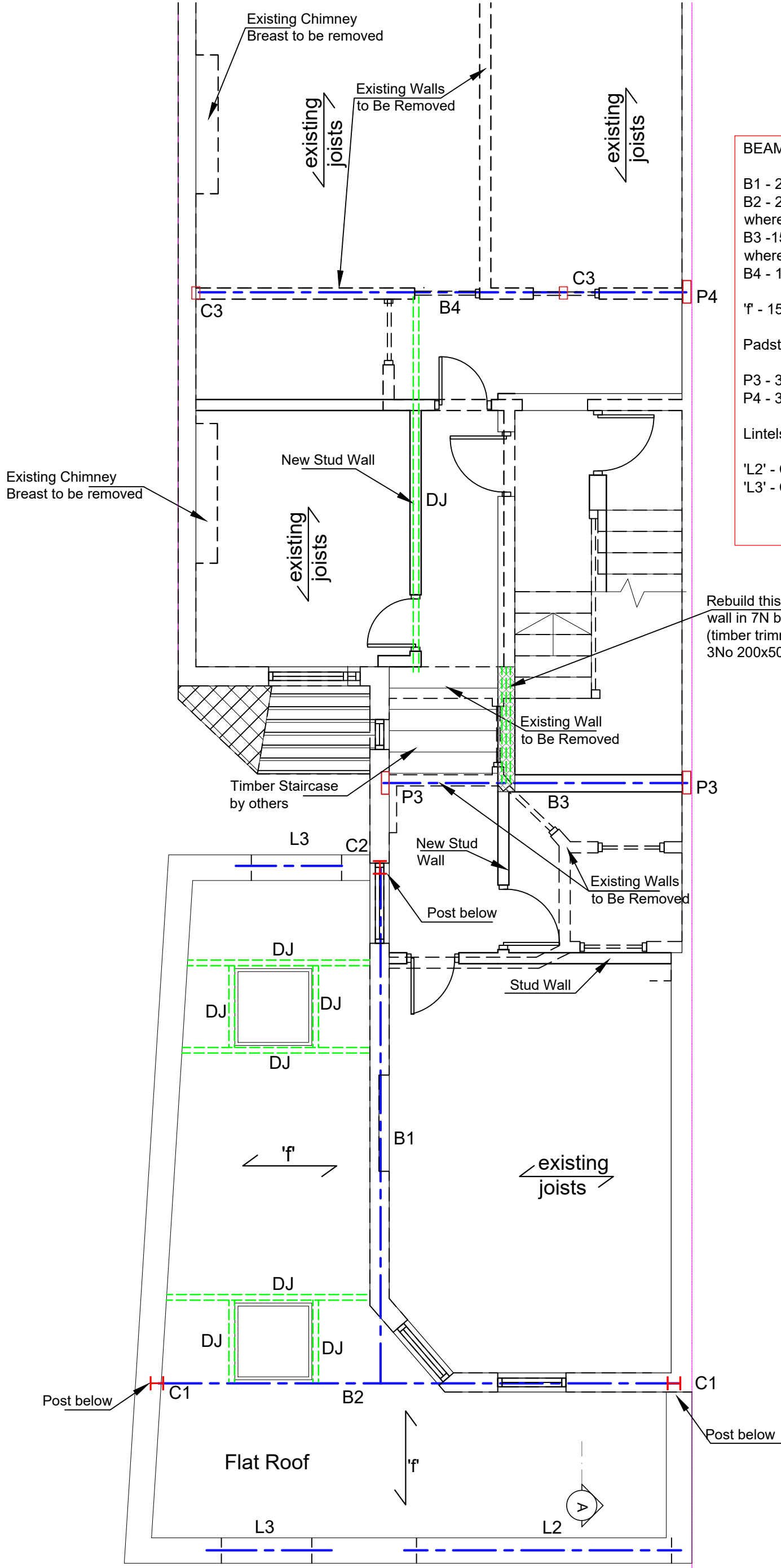
'f' - 150x50 @400 c/c Timber Joists

Padstones:

- P3 - 300x200x15 mm Steel Plate
- P4 - 300x100x10 mm Steel Plate

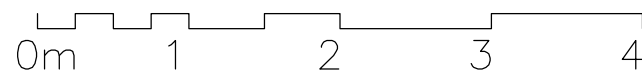
Lintels:

- 'L2' - Cavity Lintel Catnic or similar
- 'L3' - Cavity Lintel Catnic or similar



Rebuild this part of the wall in 7N block (timber trimmer under - 3No 200x50 Timb. Joists)

First Floor Plan




Issued For
Construction

General Notes
DO NOT SCALE FROM THIS DRAWING. ALL DIMENSIONS TO BE VERIFIED ON SITE BY CONTRACTOR PRIOR TO COMMENCEMENT OF ANY SHOP DRAWINGS AND ANY WORK ON SITE. REPORT ALL DISCREPANCIES TO THE ARCHITECT/ENGINEER IMMEDIATELY. THIS DRAWING IS TO BE READ IN CONJUNCTION WITH ALL RELATED ARCHITECT/ENGINEERS DRAWINGS / DETAILS AND ALL OTHER RELEVANT INFORMATION.

Notes

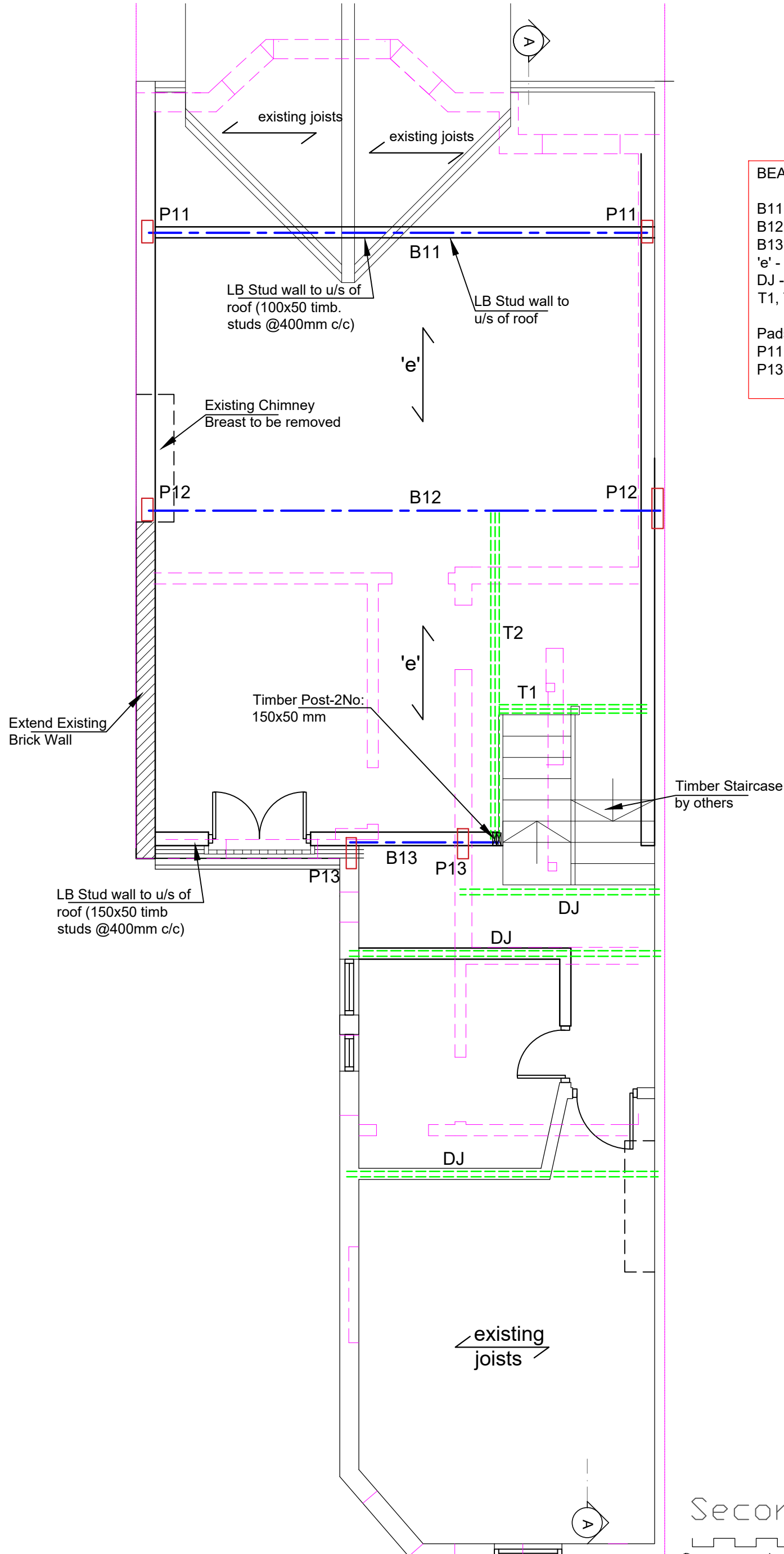
Client
Project
Fort Garry, Harlesden Rd. London NW10 3RQ
Drawing Title
FIRST FLOOR PLAN
Scale Date

Client

LIM ENGINEERING LTD
consulting engineers
15 Kinloch Drive, London NW9 7LL - Tel: 0208 205 1427 Fax: 0208 205 1427
Job No. Drawing No.
02

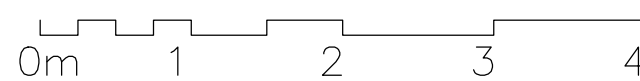
Notes:

For general notes see GN1

BEAM SCHEDULE:	
B11	- 203 UC 46
B12	- 203 UC 46
B13	- 152 UC 30
'e'	- 200x50 @300 c/c Timber Joists
DJ	- Double Joists
T1, T2	- Triple Joists (3 No 200x50mm)
Padstones:	
P11, P12	- 500x100x20 mm Steel Plate
P13	- 400x100x15 mm Steel Plate



Second Floor Plan



Construction

General Notes

DO NOT SCALE FROM THIS DRAWING.
 ALL DIMENSIONS TO BE VERIFIED ON SITE BY CONTRACTOR PRIOR TO COMMENCEMENT OF ANY SHOP DRAWINGS AND ANY WORK ON SITE.
 REPORT ALL DISCREPANCIES TO THE ARCHITECT/ENGINEER IMMEDIATELY.
 THIS DRAWING IS TO BE READ IN CONJUNCTION WITH ALL RELATED ARCHITECT/ENGINEERS DRAWINGS / DETAILS AND ALL OTHER RELEVANT INFORMATION.

Notes

Client

Fort Garry, Harlesden Rd.
 London NW10 3RQ

Drawing Title

SECOND FLOOR PLAN

Scale **Date**

LIM ENGINEERING LTD
 consulting engineers

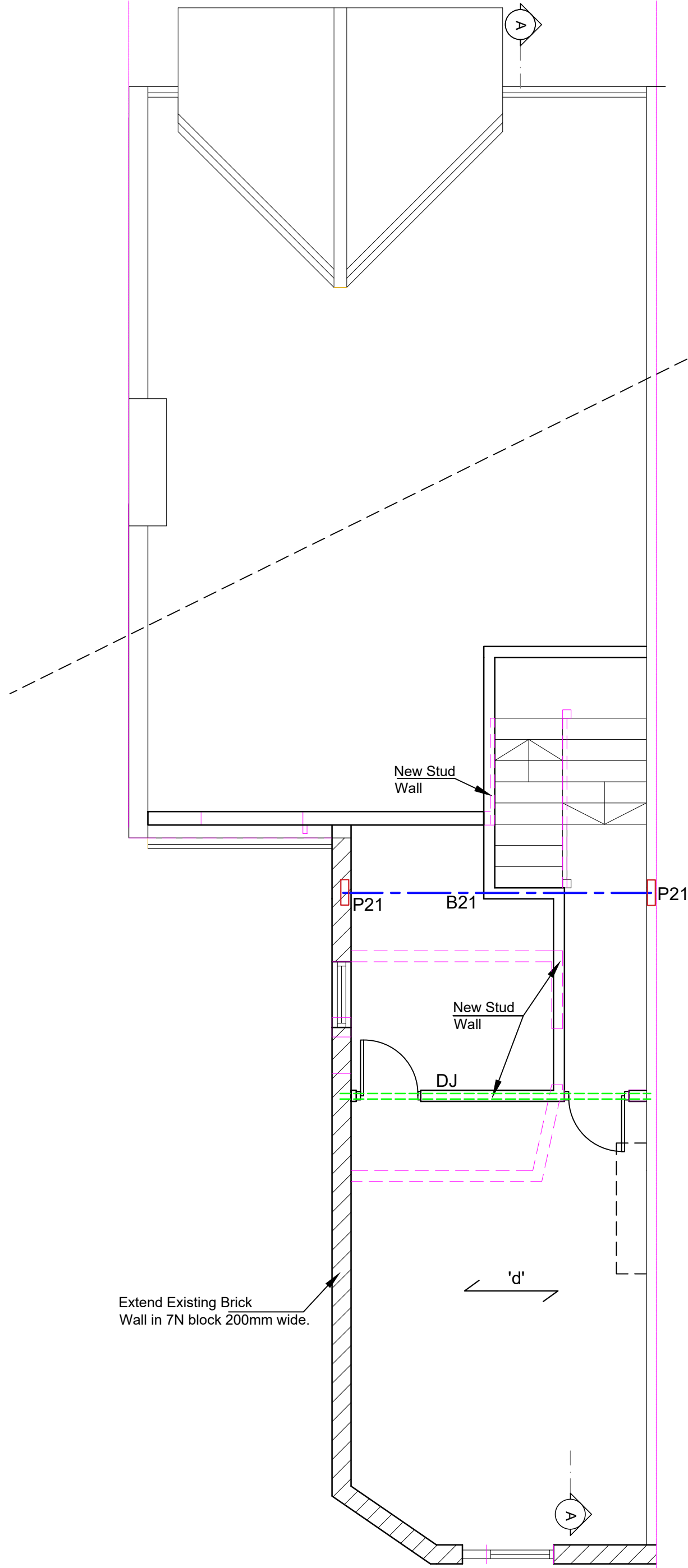
15 Kinloch Drive, London NW9 7LL - Tel: 0208 205 1427
 Fax: 0208 205 1427

Job No. **Drawing No.**

03

Notes:

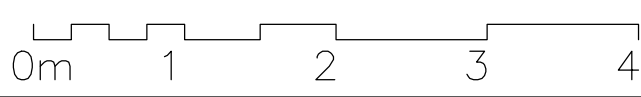
For general notes see GN1



BEAM SCHEDULE:
B21 - 152 UC 30
'd' - 200x50 @ 400 c/c Timber Joists
DJ- Double Joists
Padstones:
P21-300x100x12 mm Steel Plate

Extend Existing Brick Wall in 7N block 200mm wide.


Loft Plan



Construction
General Notes
DO NOT SCALE FROM THIS DRAWING. ALL DIMENSIONS TO BE VERIFIED ON SITE BY CONTRACTOR PRIOR TO COMMENCEMENT OF ANY SHOP DRAWINGS AND ANY WORK ON SITE. REPORT ALL DISCREPANCIES TO THE ARCHITECT/ENGINEER IMMEDIATELY. THIS DRAWING IS TO BE READ IN CONJUNCTION WITH ALL RELATED ARCHITECT/ENGINEERS DRAWINGS / DETAILS AND ALL OTHER RELEVANT INFORMATION.

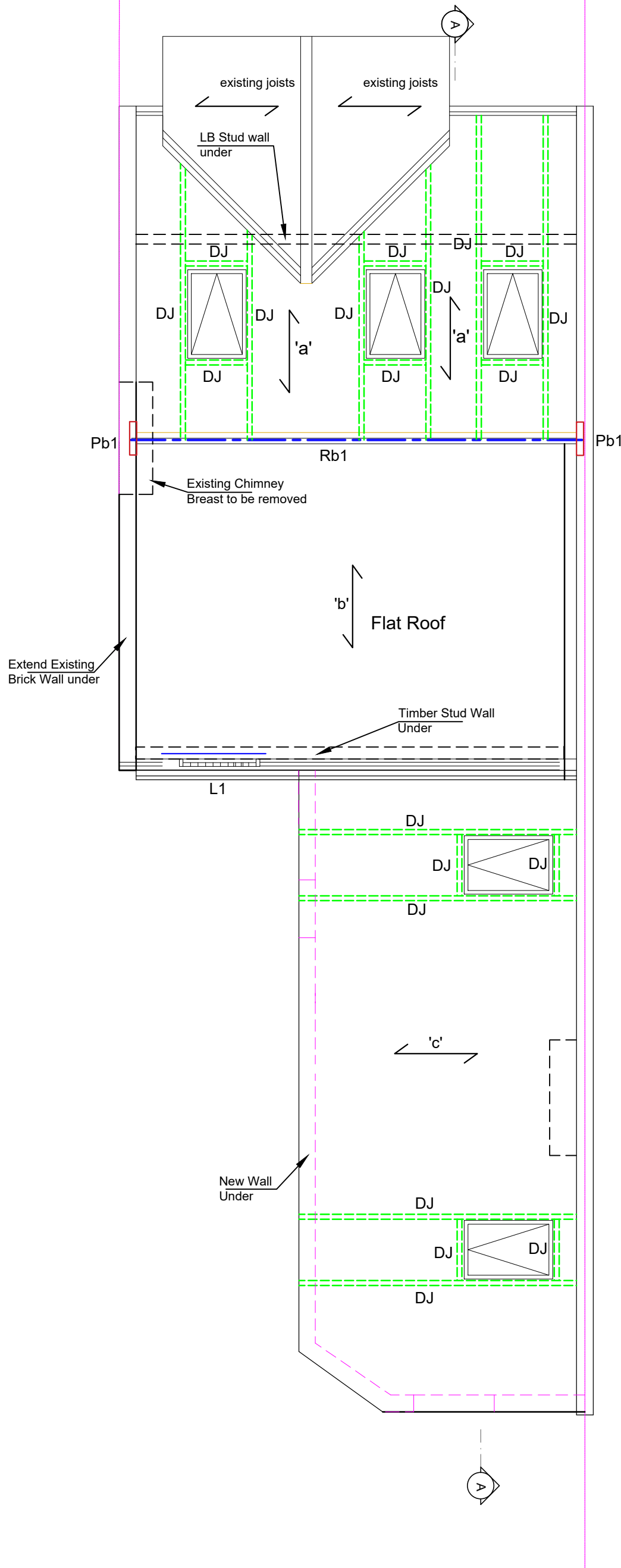
Notes

Client
Project
Fort Garry, Harlesden Rd. London NW10 3RQ
Drawing Title
LOFT PLAN
Scale Date


LIM ENGINEERING LTD
consulting engineers
15 Kinloch Drive, London NW9 7LL - Tel: 0208 205 1427 Fax: 0208 205 1427
Job No. Drawing No.
4

Notes:

For general notes see GN1



BEAM SCHEDULE:

Rb1 - 203 UC 46

Timber Rafters:

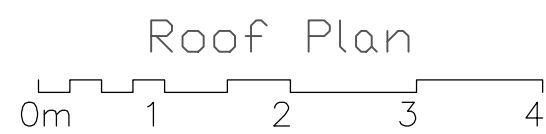
'a' - 150x50 @400 c/c Timber Joists
 'b' - 200x50@300 c/c Timber Joists
 'c' - 200x50 @400 c/c Timber Joists
 DJ - Double Joists

Lintels:

'Li1'-2 No 200x50 mm Timber Joists

Padstones:

Pb1 - 450x100x15 Steel Plate



Issued For

Construction

General Notes

DO NOT SCALE FROM THIS DRAWING.
 ALL DIMENSIONS TO BE VERIFIED ON SITE BY CONTRACTOR PRIOR TO COMMENCEMENT OF ANY SHOP DRAWINGS AND ANY WORK ON SITE. REPORT ALL DISCREPANCIES TO THE ARCHITECT/ENGINEER IMMEDIATELY.
 THIS DRAWING IS TO BE READ IN CONJUNCTION WITH ALL RELATED ARCHITECT/ENGINEERS DRAWINGS / DETAILS AND ALL OTHER RELEVANT INFORMATION.

Notes

Client

Project

**Fort Garry, Harlesden Rd.
 London NW10 3RQ**

Drawing Title

ROOF PLAN

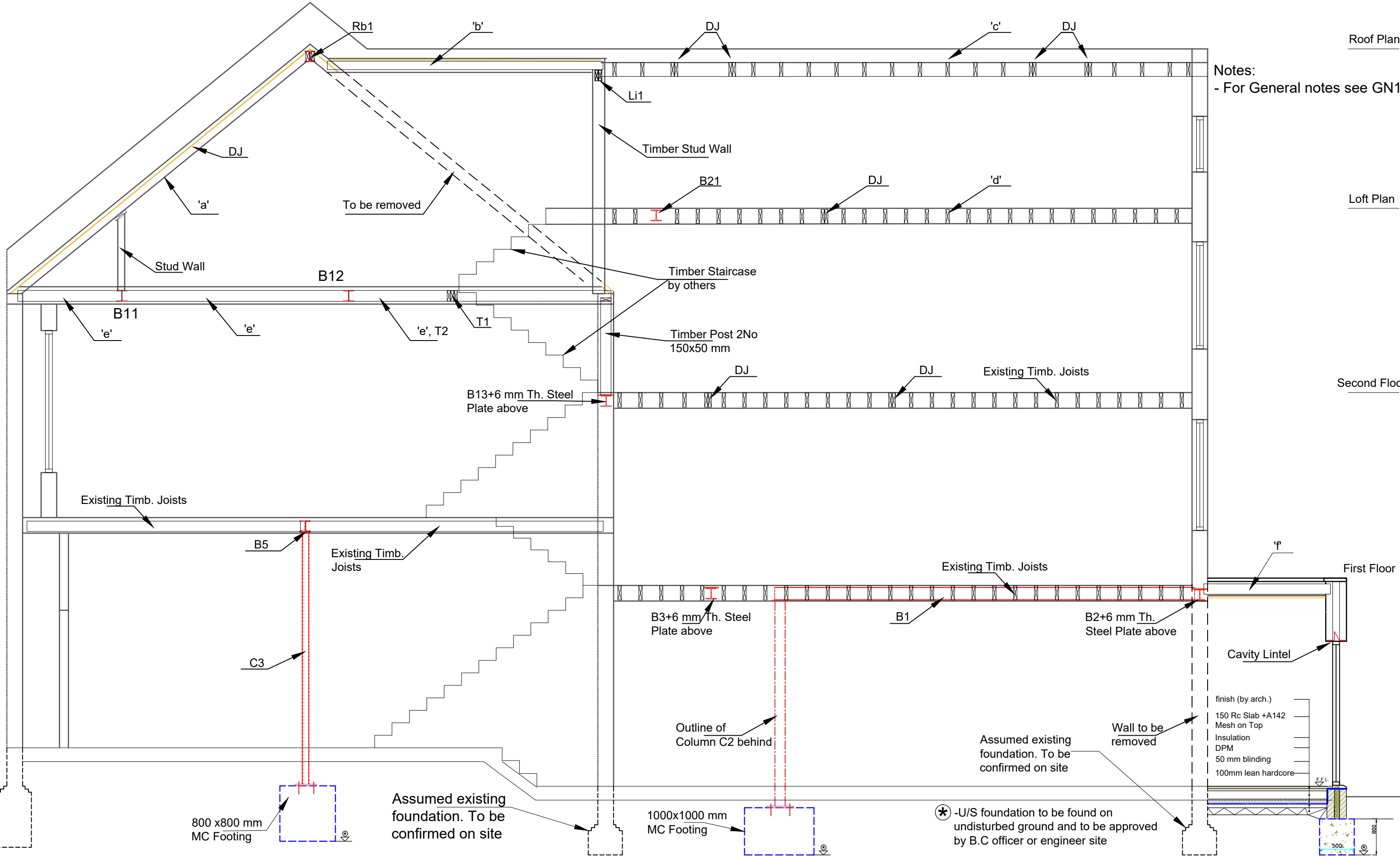
Scale Date

LIM ENGINEERING LTD
 consulting engineers

15 Kinloch Drive, London NW9 7LL - Tel: 0208 205 1427
 Fax: 0208 205 1427

Job No. Drawing No.

05



Notes:
- For General notes see GN1

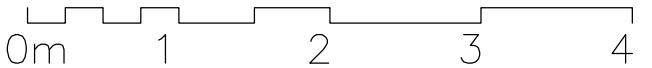
Roof Plan

Loft Plan

Second Floor

First Floor

Section A-A



Issued For
Construction

General Notes
DO NOT SCALE FROM THIS DRAWING. ALL DIMENSIONS TO BE VERIFIED ON SITE BY CONTRACTOR PRIOR TO COMMENCEMENT OF ANY SHOP DRAWINGS AND ANY WORK ON SITE. REPORT ALL DISCREPANCIES TO THE ARCHITECT/ENGINEER IMMEDIATELY. THIS DRAWING IS TO BE READ IN CONJUNCTION WITH ALL RELATED ARCHITECT/ENGINEERS DRAWINGS / DETAILS AND ALL OTHER RELEVANT INFORMATION.

Notes

Client
-

Project
Fort Garry, Harlesden Road
London NW10

Drawing Title
SECTION A - A

Scale
1:50@A3

Date
Nov. 2016

LIM ENGINEERING LTD
consulting engineers

15 Kinloch Drive, London, Nw9 7LL - Tel: 020 8205 1427
Fax: 020 8205 1427

Job No.
-

Drawing No.
06