


Information
General Notes
DO NOT SCALE FROM THIS DRAWING.
ALL DIMENSIONS TO BE VERIFIED ON SITE BY CONTRACTOR PRIOR TO COMMENCEMENT OF ANY SHOP DRAWINGS AND ANY WORK ON SITE. REPORT ALL DISCREPANCIES TO THE ARCHITECT/ENGINEER IMMEDIATELY. THIS DRAWING IS TO BE READ IN CONJUNCTION WITH ALL RELATED ARCHITECT/ ENGINEERS DRAWINGS / DETAILS AND ALL OTHER RELEVANT INFORMATION.

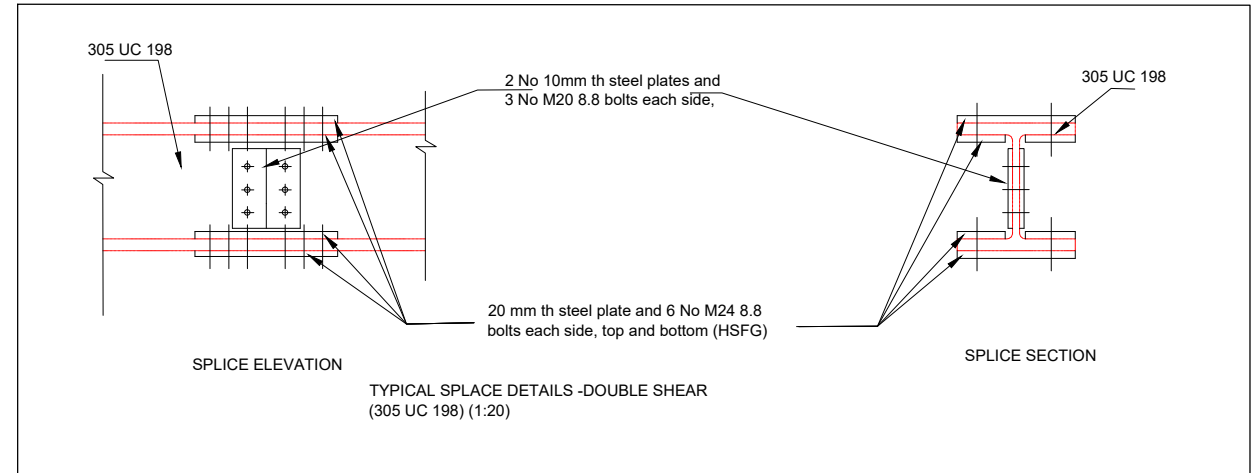
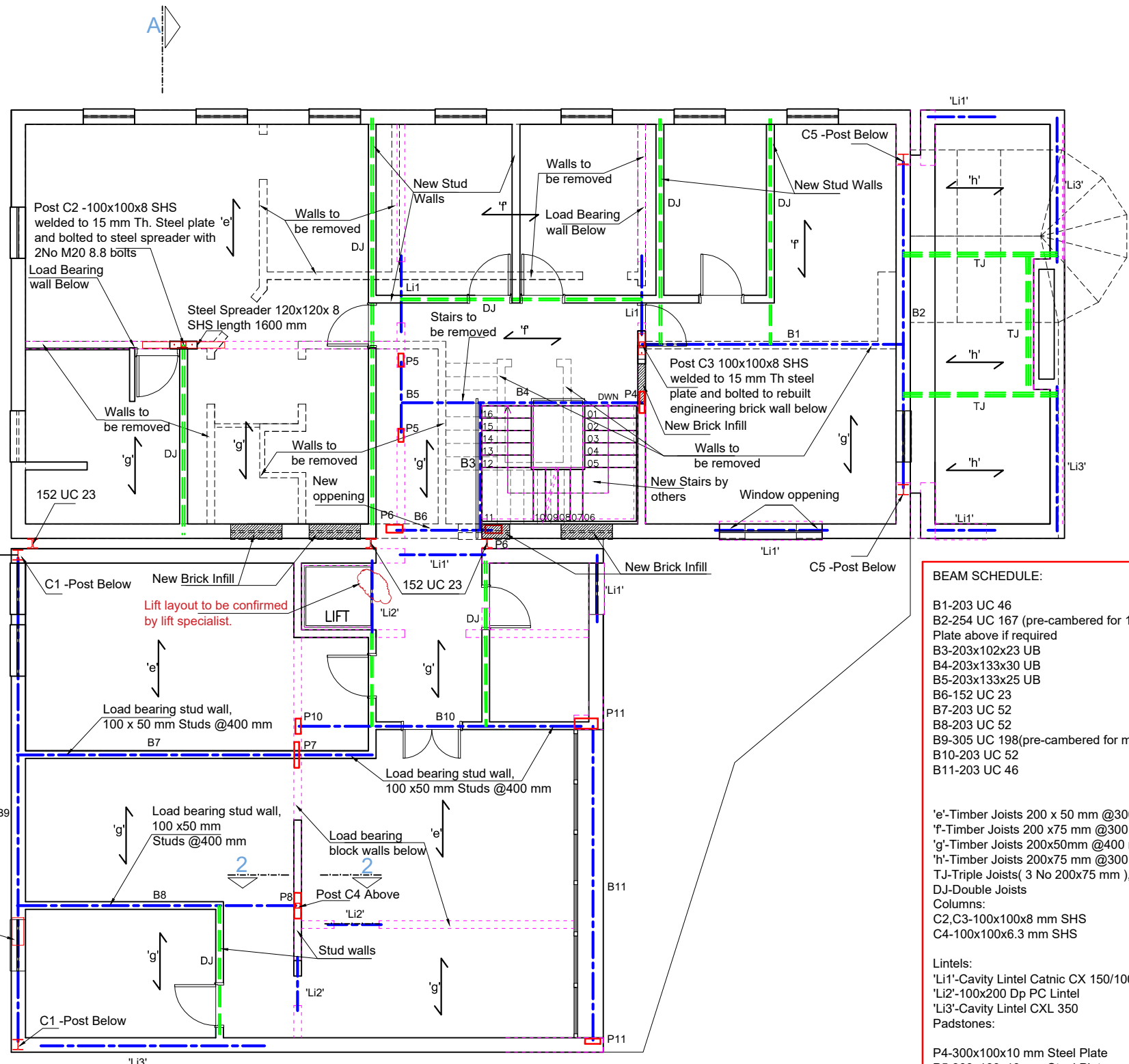
Notes

Client
-
Project
22 Verulam Avenue
Purley, CR8 3 NQ
Drawing Title
GROUND FLOOR PLAN
Scale
1:100@A3
Date
Dec. 2016

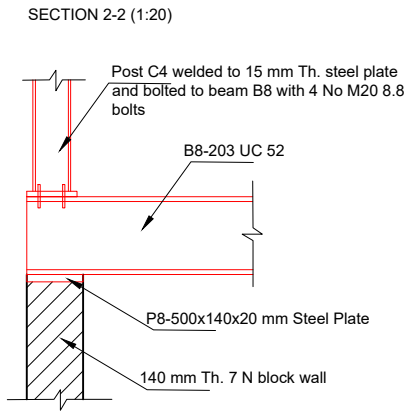


LIM ENGINEERING LTD
consulting engineers
15 Kinloch Drive, London, Nw9 7LL - Tel: 020 8205 1427
Fax: 020 8205 1427
Job No. _____ Drawing No. _____
1-Rev A

Notes:
For general notes see GN1



- BEAM SCHEDULE:**
- B1-203 UC 46
 - B2-254 UC 167 (pre-cambered for 10 mm) +10 mm Th. Steel Plate above if required
 - B3-203x102x23 UB
 - B4-203x133x30 UB
 - B5-203x133x25 UB
 - B6-152 UC 23
 - B7-203 UC 52
 - B8-203 UC 52
 - B9-305 UC 198 (pre-cambered for min 19 mm)
 - B10-203 UC 52
 - B11-203 UC 46
- Joists:**
- 'e'-Timber Joists 200 x 50 mm @300 mm c/c
 - 'f'-Timber Joists 200 x75 mm @300 mm c/c, Grade C24
 - 'g'-Timber Joists 200x50mm @400 mm c/c
 - 'h'-Timber Joists 200x75 mm @300 mm c/c, Grade C24
 - TJ-Triple Joists (3 No 200x75 mm), Grade C24
 - DJ-Double Joists
- Columns:**
- C2,C3-100x100x8 mm SHS
 - C4-100x100x6.3 mm SHS
- Lintels:**
- 'Li1'-Cavity Lintel Catnic CX 150/100
 - 'Li2'-100x200 Dp PC Lintel
 - 'Li3'-Cavity Lintel CXL 350
- Padstones:**
- P4-300x100x10 mm Steel Plate
 - P5-300x100x10 mm Steel Plate
 - P6-150x200x10 mm Steel Plate
 - P7-500x140x20 mm Steel Plate
 - P8-500x140x20 mm Steel Plate
 - P10-300x140x10 mm Steel Plate
 - P11-450x200x20 mm Steel Plate



Information
General Notes

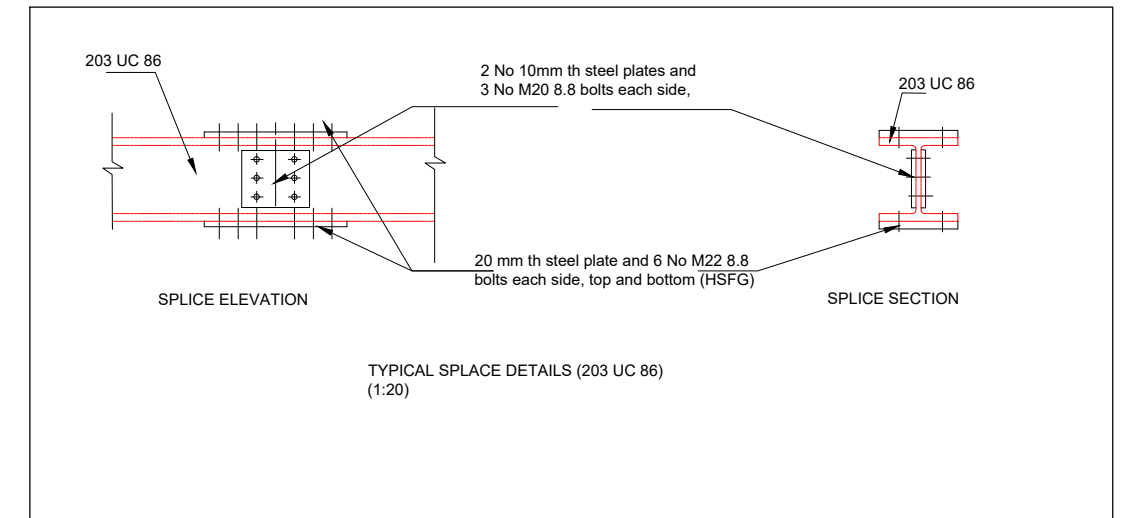
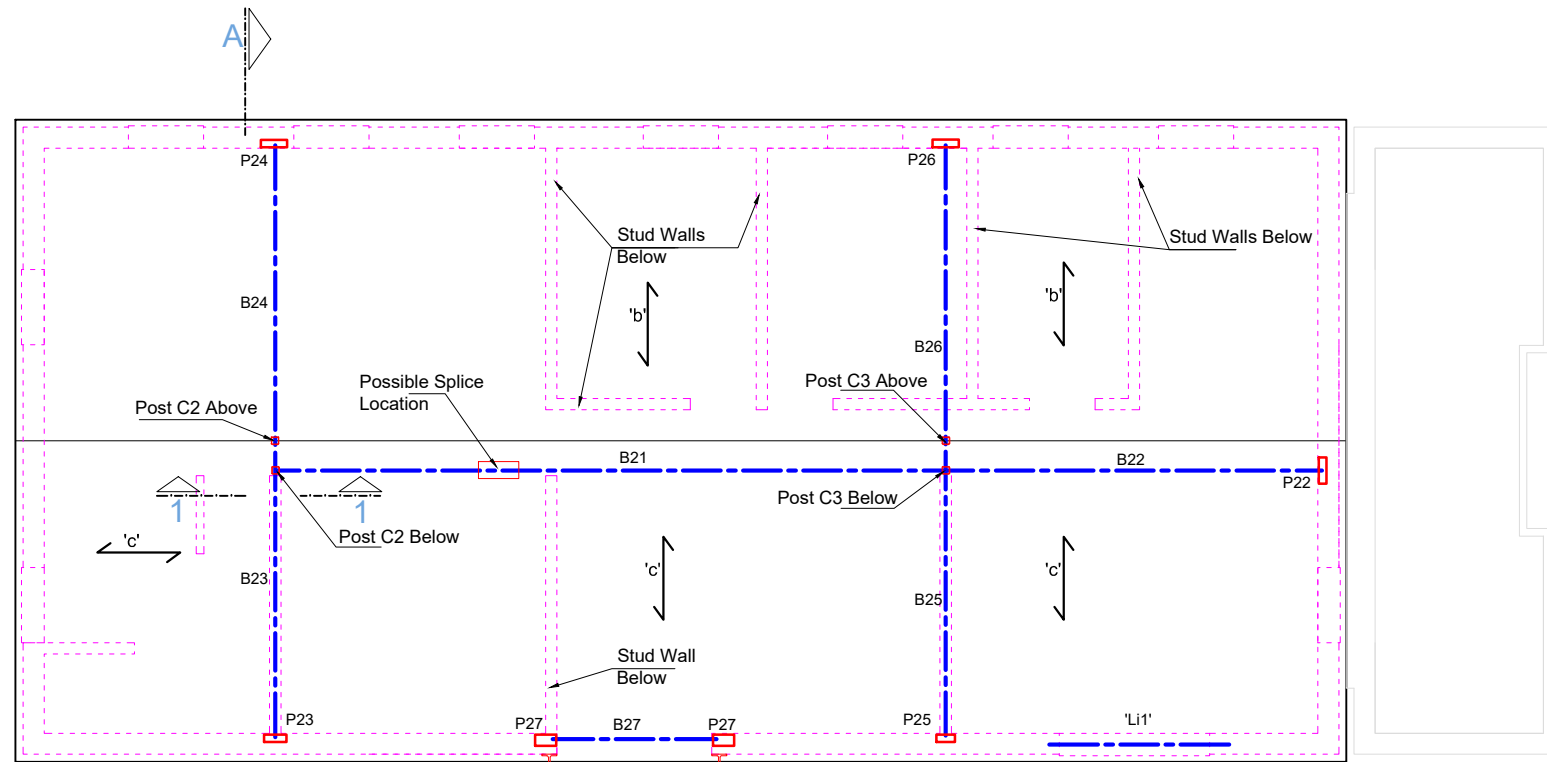
DO NOT SCALE FROM THIS DRAWING.
ALL DIMENSIONS TO BE VERIFIED ON SITE BY CONTRACTOR PRIOR TO COMMENCEMENT OF ANY SHOP DRAWINGS AND ANY WORK ON SITE.
REPORT ALL DISCREPANCIES TO THE ARCHITECT/ENGINEER IMMEDIATELY.
THIS DRAWING IS TO BE READ IN CONJUNCTION WITH ALL RELATED ARCHITECT/ ENGINEERS DRAWINGS / DETAILS AND ALL OTHER RELEVANT INFORMATION.

Issued For	Notes	Client
		-
		Project
		22 Verulam Avenue Purley, CR8 3 NQ
		Drawing Title
		FIRST FLOOR PLAN
		Scale
		1:100@A3
		Date
		Dec. 2016
		Job No.
		Drawing No.
		02-Rev A

LIM ENGINEERING LTD
consulting engineers

15 Kinloch Drive, London, Nw9 7LL - Tel: 020 8205 1427
Fax: 020 8205 1427

Notes:
For general notes see GN1

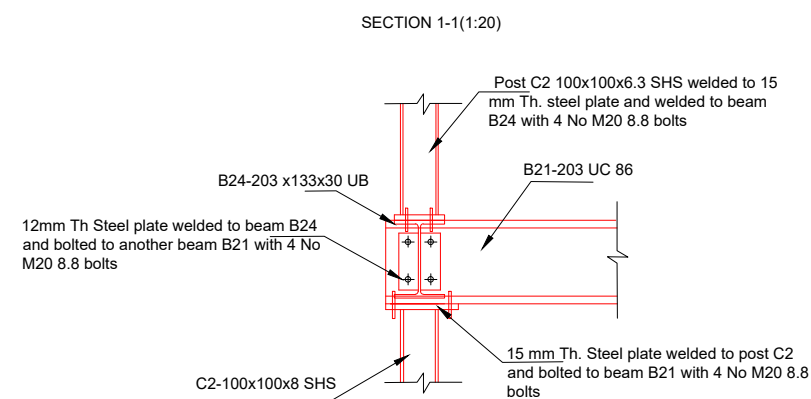
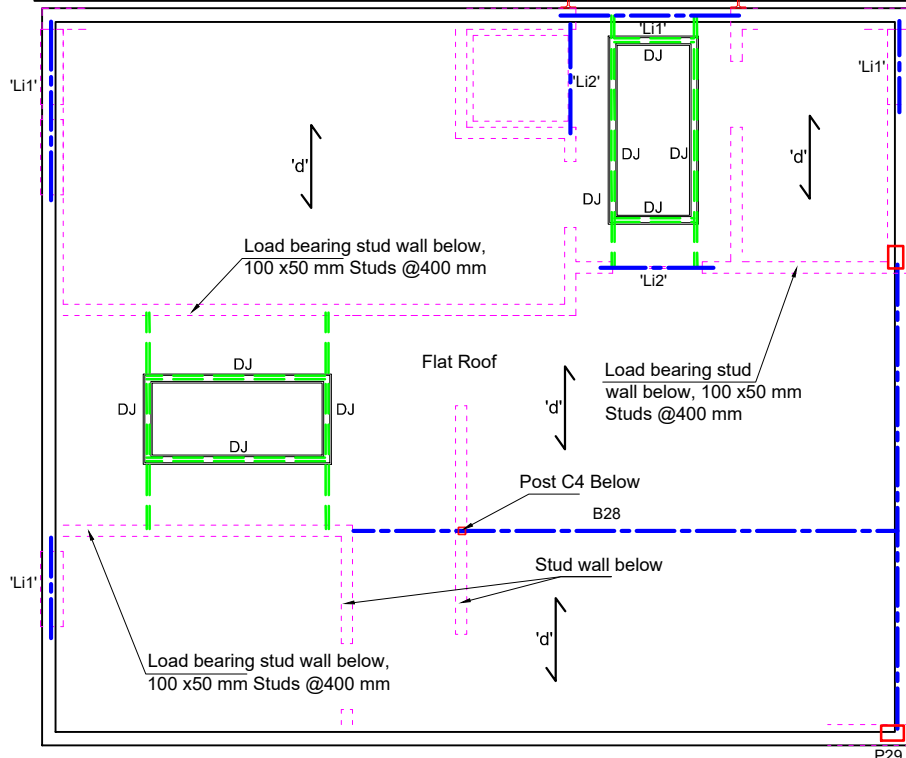


BEAM SCHEDULE:

B21-203 UC 86 (pre-cambered for min15 mm)
 B22-203 UC 46
 B23-203x133x30 UB
 B24-203x133x30 UB
 B25-203x102x23 UB
 B26-203 x133x30 UB
 B27-152 UC 23
 B28-203 UC 46
 B29-203 UC 52

'b'-Timber Joists 200x50 mm @ 300 mm c/c
 'c'-Timber Joists 200x50 mm @ 400 mm c/c
 'd'-Timber Joists 200x50 mm @400 mm c/c
 DJ-Double Joists
 Columns:
 C2,C3-100x100x6.3 mm SHS

Lintels:
 'Li1'-Cavity Lintel Catnic CX 150/100
 'Li2'-100x200 Dp. PC Lintel
 Padstones:
 P22-350x100x12 mm Steel Plate
 P23-300x100x10 mm Steel Plate
 P24-350x100x15 mm Steel Plate
 P25-250x100x10 mm Steel Plate
 P26-350x100x15 mm Steel Plate
 P27-150x200x10 mm Steel Plate
 P25-150x200x10 mm Steel Plate
 P29-200x300x15 mm Steel Plate



Information
General Notes
DO NOT SCALE FROM THIS DRAWING.
ALL DIMENSIONS TO BE VERIFIED ON SITE BY CONTRACTOR PRIOR TO COMMENCEMENT OF ANY SHOP DRAWINGS AND ANY WORK ON SITE.
REPORT ALL DISCREPANCIES TO THE ARCHITECT/ENGINEER IMMEDIATELY.
THIS DRAWING IS TO BE READ IN CONJUNCTION WITH ALL RELATED ARCHITECT/ ENGINEERS DRAWINGS / DETAILS AND ALL OTHER RELEVANT INFORMATION.

Issued For	Notes	Client
		-
		Project
		22 Verulam Avenue Purley, CR8 3 NQ
		Drawing Title
		LOFT FLOOR PLAN
		Scale
		1:100@A3
		Date
		Dec. 2016

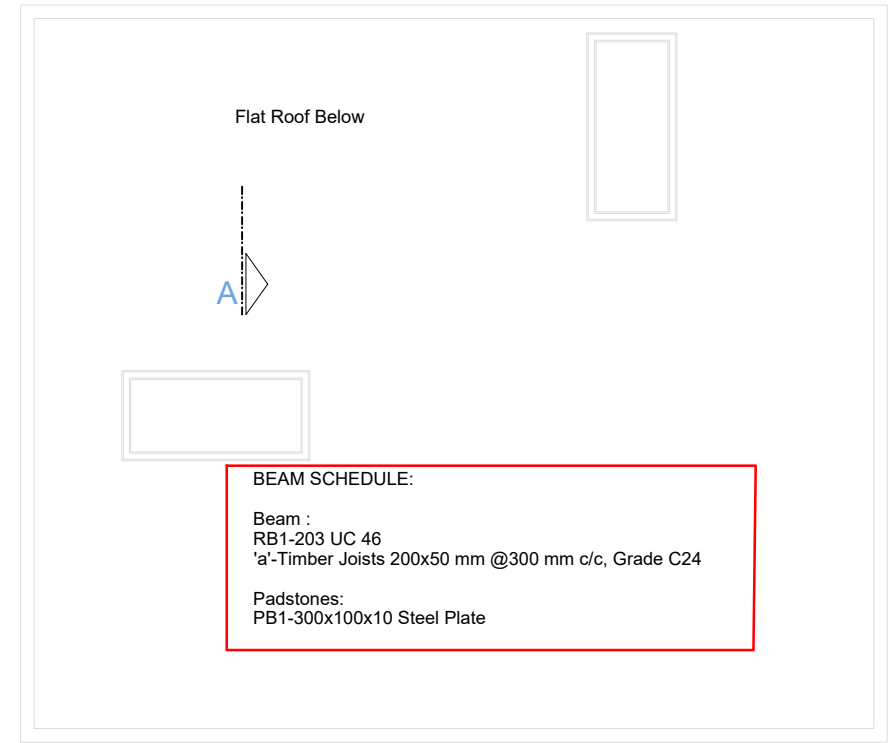
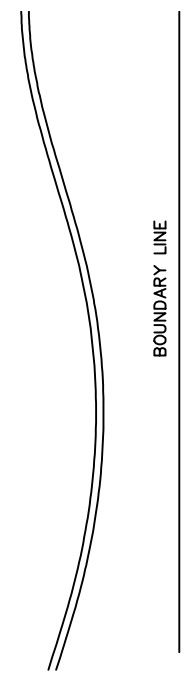
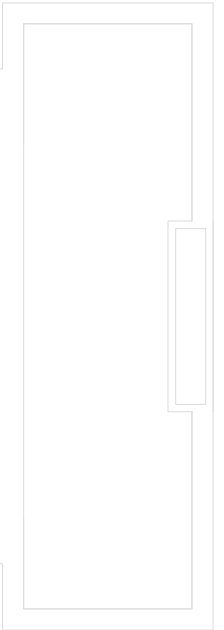
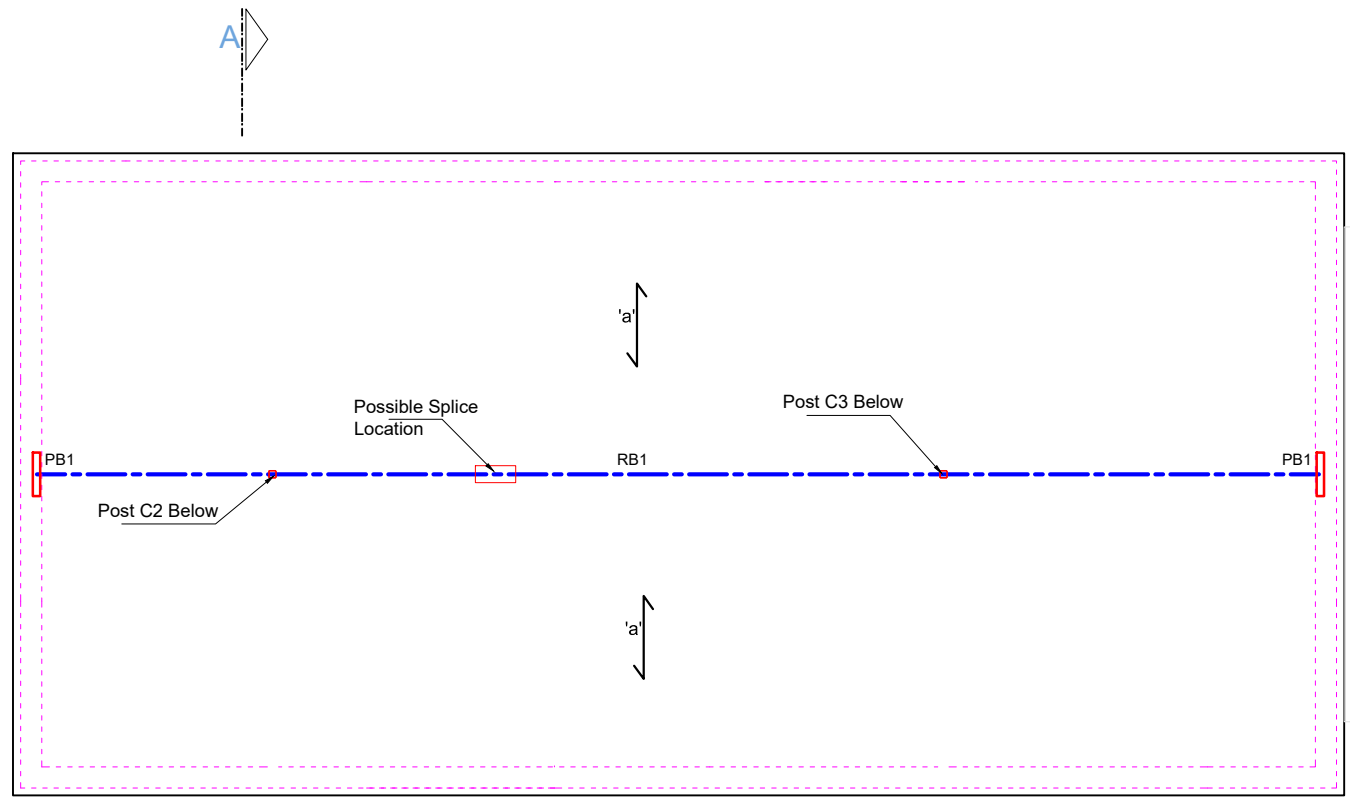
LIM ENGINEERING LTD
consulting engineers

15 Kinloch Drive, London, Nw9 7LL - Tel: 020 8205 1427
Fax: 020 8205 1427

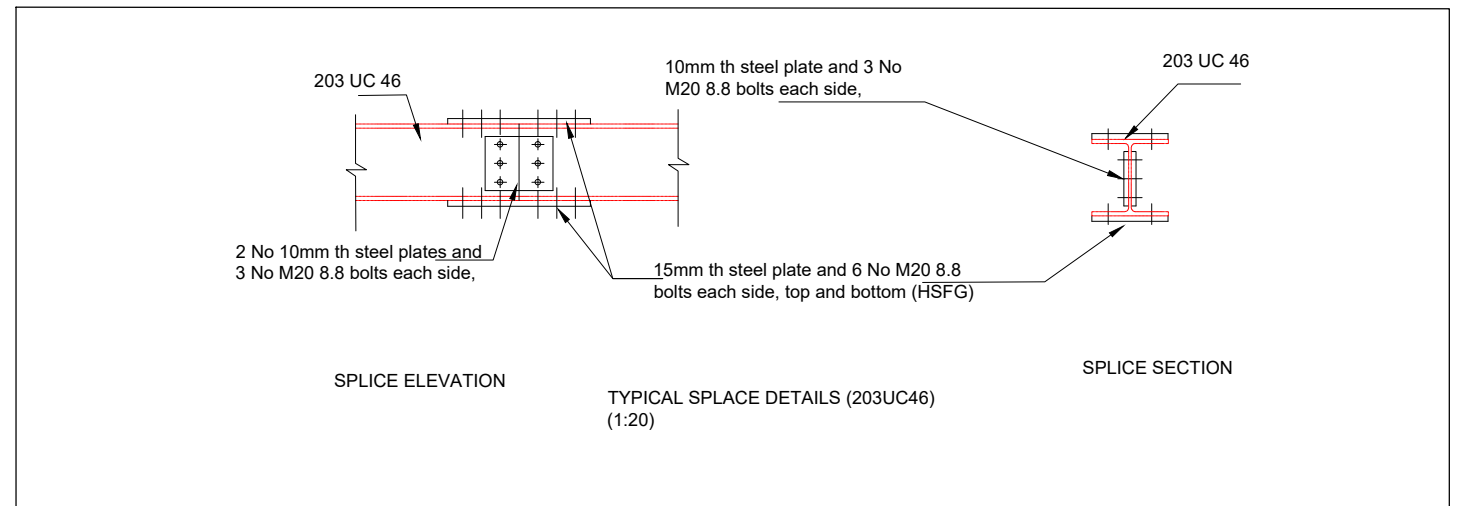
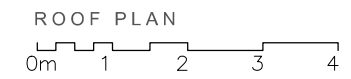
Job No. Drawing No.

03-Rev A

Notes:
For general notes see GN1



BEAM SCHEDULE:
 Beam :
 RB1-203 UC 46
 'a'-Timber Joists 200x50 mm @300 mm c/c, Grade C24
 Padstones:
 PB1-300x100x10 Steel Plate



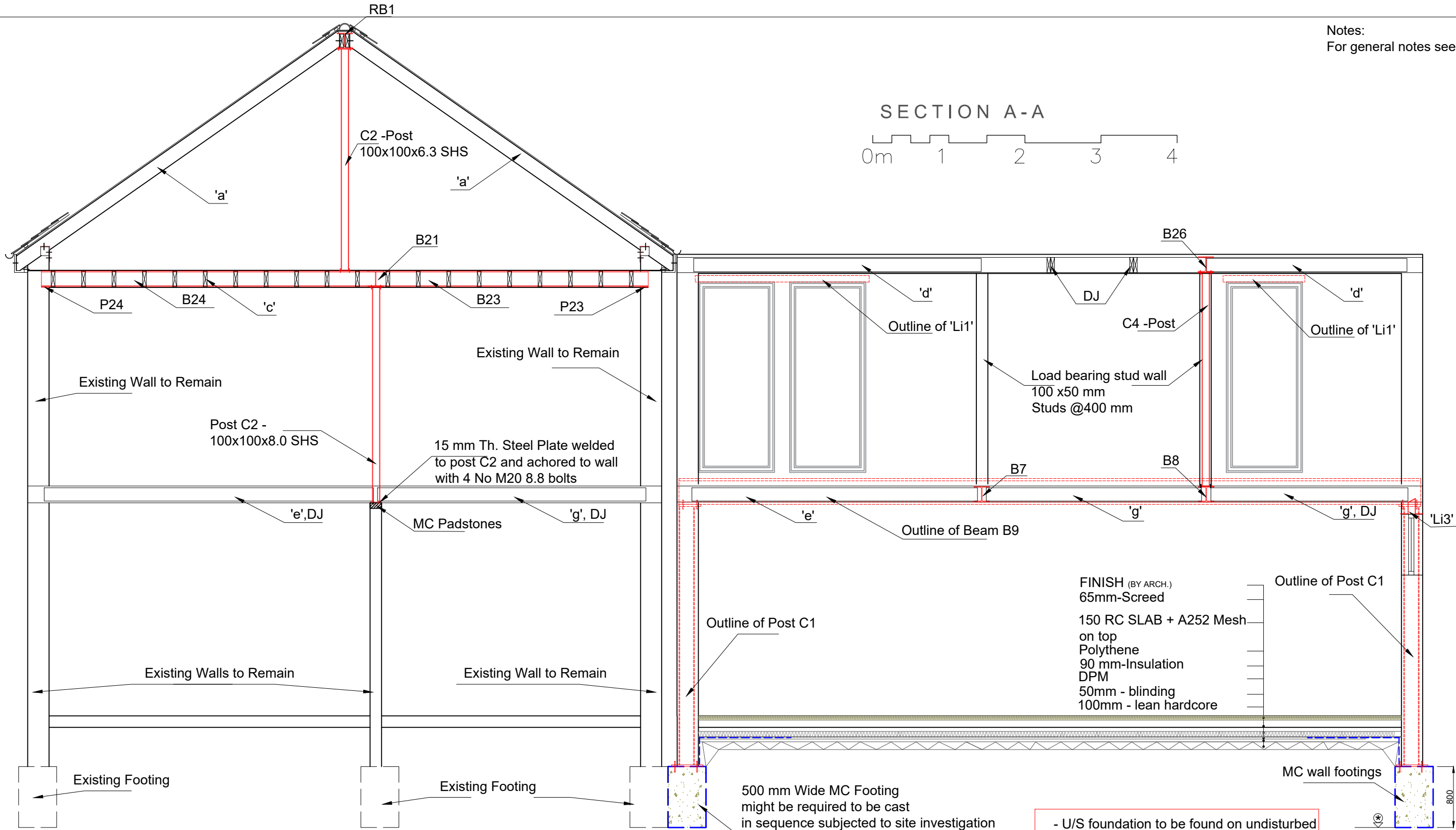
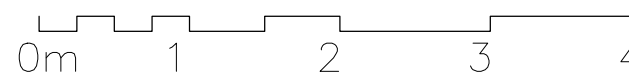
Information
 General Notes
 DO NOT SCALE FROM THIS DRAWING.
 ALL DIMENSIONS TO BE VERIFIED ON SITE BY CONTRACTOR PRIOR TO COMMENCEMENT OF ANY SHOP DRAWINGS AND ANY WORK ON SITE.
 REPORT ALL DISCREPANCIES TO THE ARCHITECT/ENGINEER IMMEDIATELY.
 THIS DRAWING IS TO BE READ IN CONJUNCTION WITH ALL RELATED ARCHITECT/ ENGINEERS DRAWINGS / DETAILS AND ALL OTHER RELEVANT INFORMATION.

Notes

Client
 -
 Project
 22 Verulam Avenue
 Purley, CR8 3 NQ
 Drawing Title
 ROOF PLAN
 Scale
 1:100@A3
 Date
 Dec. 2016

LIM ENGINEERING LTD
 consulting engineers
 15 Kinloch Drive, London, Nw9 7LL - Tel: 020 8205 1427
 Fax: 020 8205 1427
 Job No.
 Drawing No.
 04-Rev A

SECTION A-A



Issued For

Notes

Client

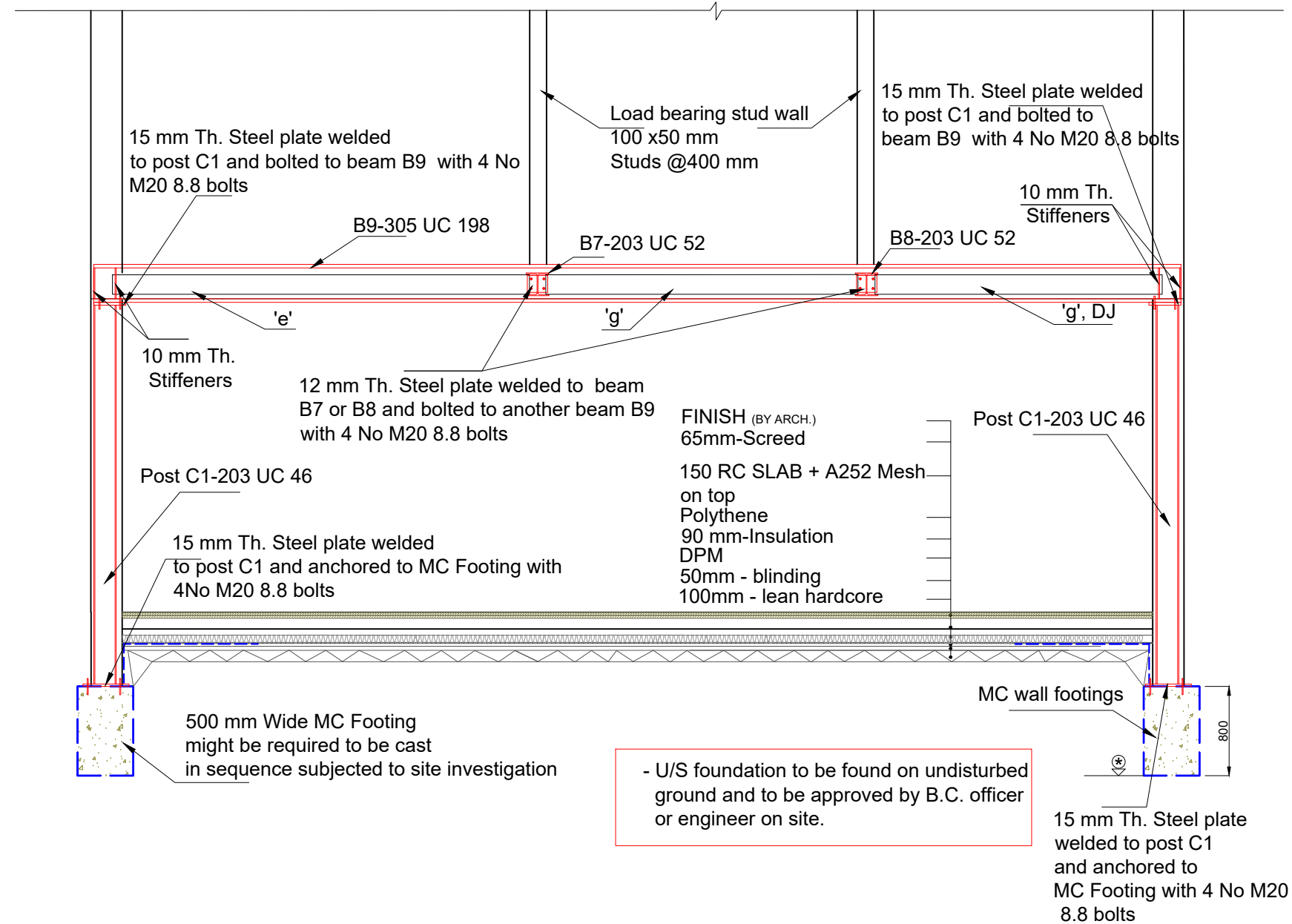
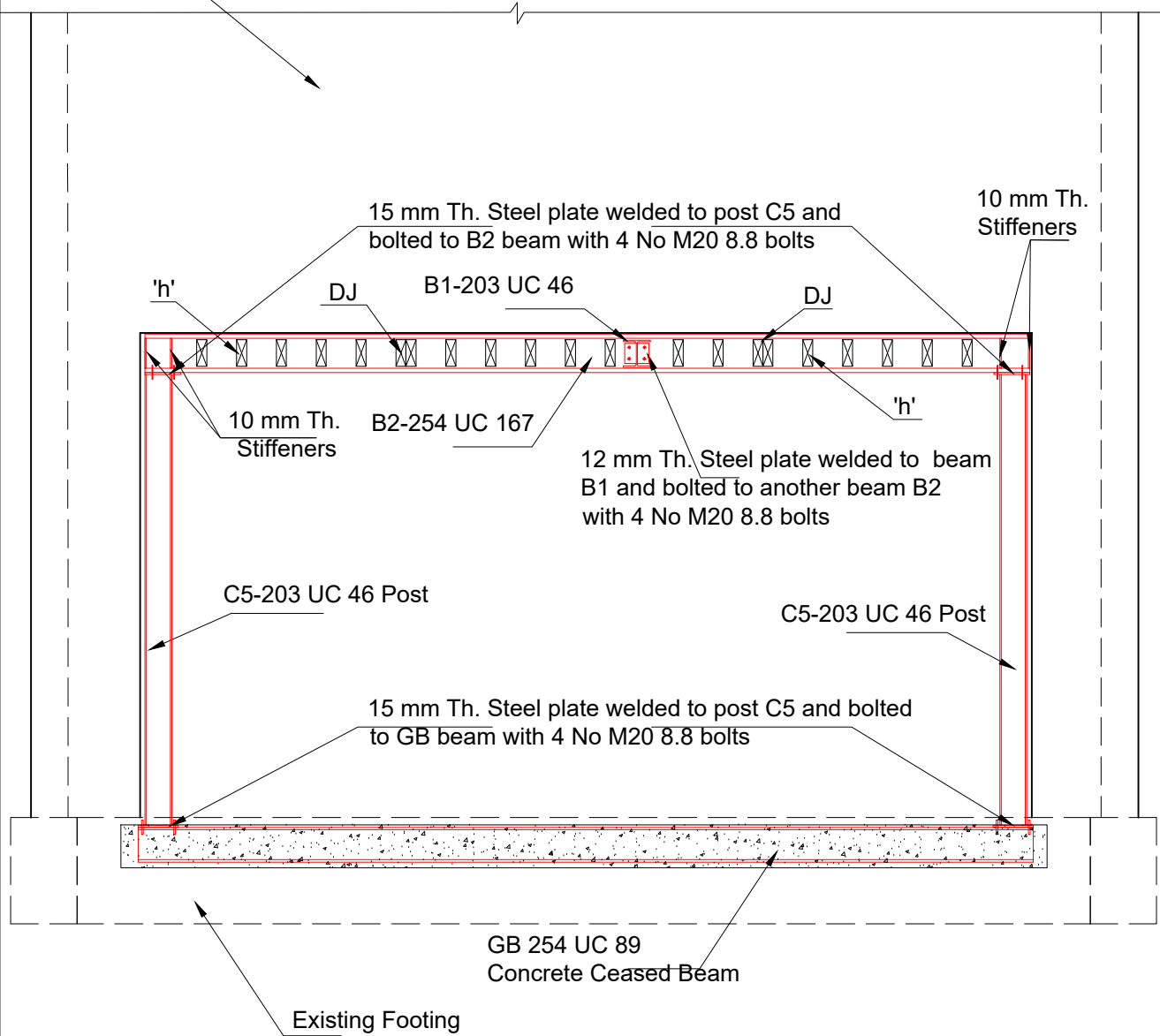
Information
General Notes
DO NOT SCALE FROM THIS DRAWING.
ALL DIMENSIONS TO BE VERIFIED ON SITE BY CONTRACTOR PRIOR TO COMMENCEMENT OF ANY SHOP DRAWINGS AND ANY WORK ON SITE.
REPORT ALL DISCREPANCIES TO THE ARCHITECT/ENGINEER IMMEDIATELY.
THIS DRAWING IS TO BE READ IN CONJUNCTION WITH ALL RELATED ARCHITECT/ ENGINEERS DRAWINGS / DETAILS AND ALL OTHER RELEVANT INFORMATION.

Client
-
Project
22 Verulam Avenue
Purley, CR8 3 NQ
Drawing Title
SECTION A-A
Scale
1:50@A3
Date
Dec. 2016

Client
-
Project
22 Verulam Avenue
Purley, CR8 3 NQ
Drawing Title
SECTION A-A
Scale
1:50@A3
Date
Dec. 2016

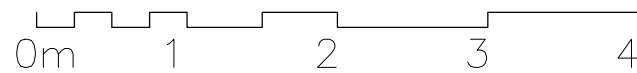
LIM ENGINEERING LTD
consulting engineers
15 Kinloch Drive, London, Nw9 7LL - Tel: 020 8205 1427
Fax: 020 8205 1427
Job No.
Drawing No.
05-Rev A

Existing Wall above



- U/S foundation to be found on undisturbed ground and to be approved by B.C. officer or engineer on site.


STEEL FRAMES



Information
General Notes
DO NOT SCALE FROM THIS DRAWING.
ALL DIMENSIONS TO BE VERIFIED ON SITE BY CONTRACTOR PRIOR TO COMMENCEMENT OF ANY SHOP DRAWINGS AND ANY WORK ON SITE.
REPORT ALL DISCREPANCIES TO THE ARCHITECT/ENGINEER IMMEDIATELY.
THIS DRAWING IS TO BE READ IN CONJUNCTION WITH ALL RELATED ARCHITECT/ ENGINEERS DRAWINGS / DETAILS AND ALL OTHER RELEVANT INFORMATION.

Notes

Client
Project
22 Verulam Avenue
Purley, CR8 3 NQ
Drawing Title
Steel Frames
Scale
1:50@A3
Date
Dec. 2016



LIM ENGINEERING LTD
consulting engineers
15 Kinloch Drive, London, Nw9 7LL - Tel: 020 8205 1427
Fax: 020 8205 1427
Job No.
Drawing No.
06