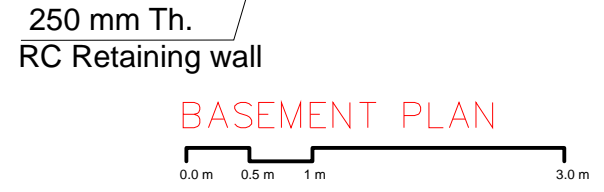
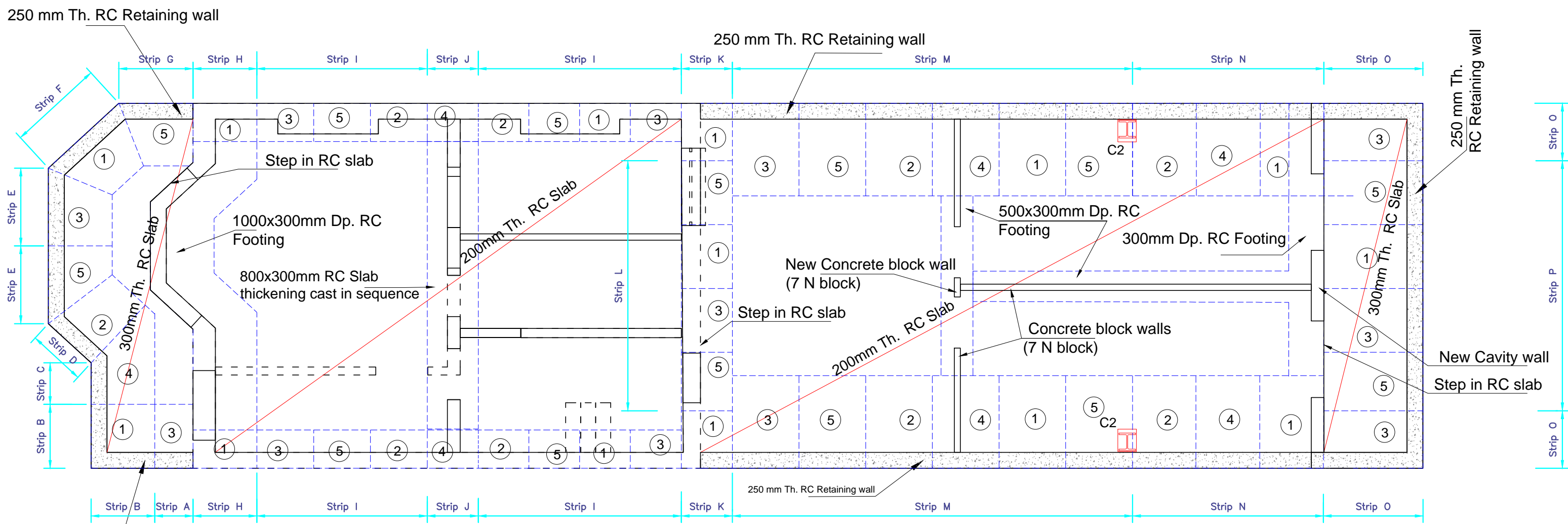


Notes:
For General notes see GN1




BEAM SCHEDULE:
Column
C1 - 203 UC 46

Information
General Notes
DO NOT SCALE FROM THIS DRAWING. ALL DIMENSIONS TO BE VERIFIED ON SITE BY CONTRACTOR PRIOR TO COMMENCEMENT OF ANY SHOP DRAWINGS AND ANY WORK ON SITE. REPORT ALL DISCREPANCIES TO THE ARCHITECT/ENGINEER IMMEDIATELY. THIS DRAWING IS TO BE READ IN CONJUNCTION WITH ALL RELATED ARCHITECT/ ENGINEERS DRAWINGS / DETAILS AND ALL OTHER RELEVANT INFORMATION.

- Notes
1. Concrete grade to be C^{28/35}
 2. Reinforcement listed at bending schedule

Client	
-	
Project	
158 Iverson Rd. London NW6	
Drawing Title	
Plan -RC walls and underp. sequences	
Scale	Date
1:60@A3	May 2016

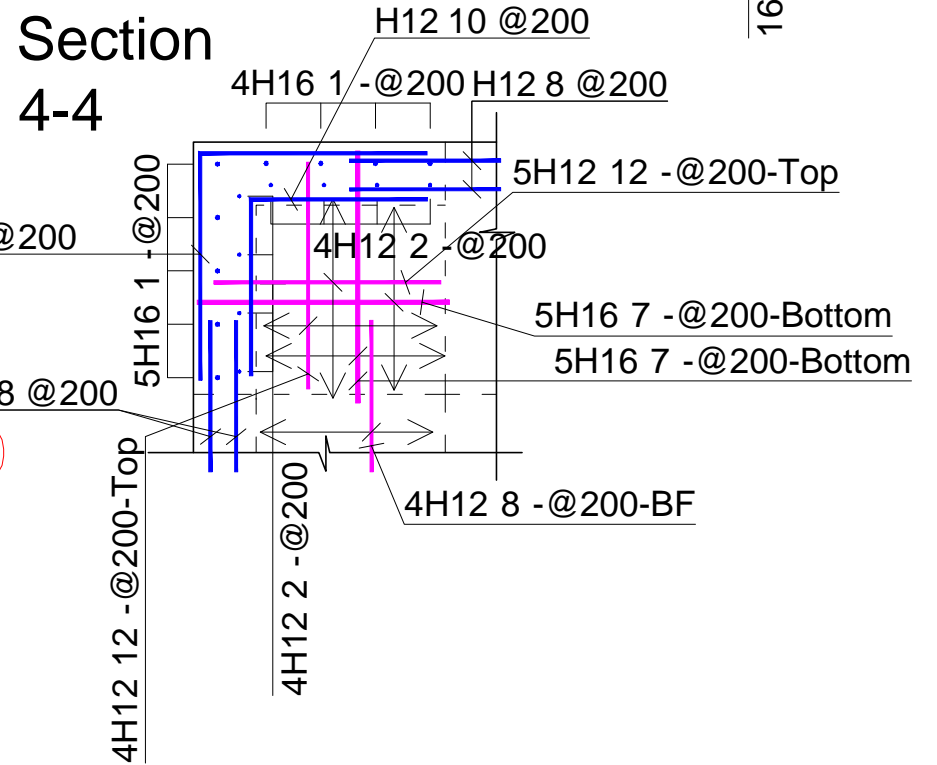
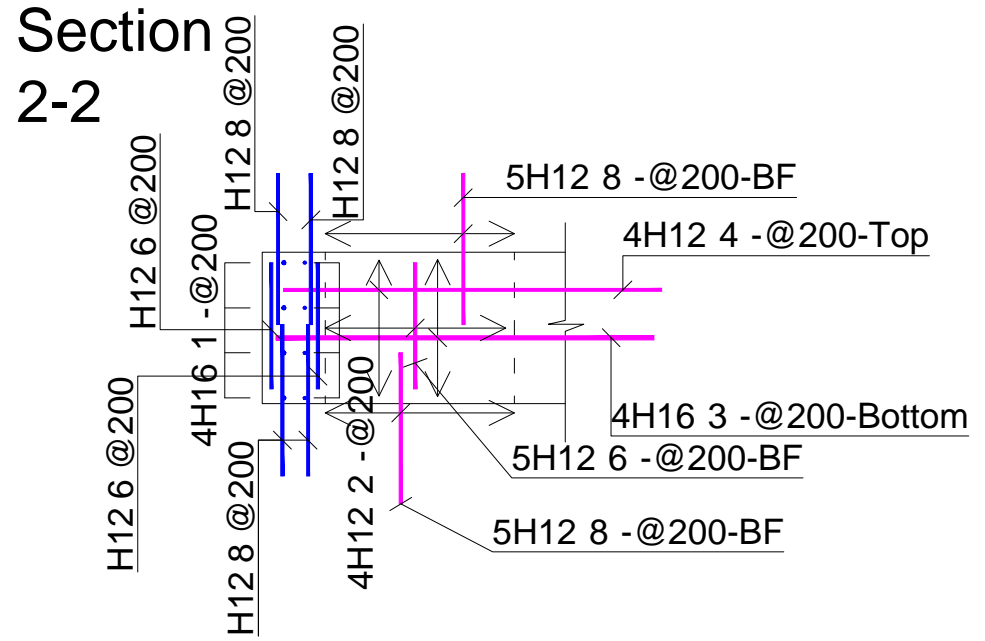
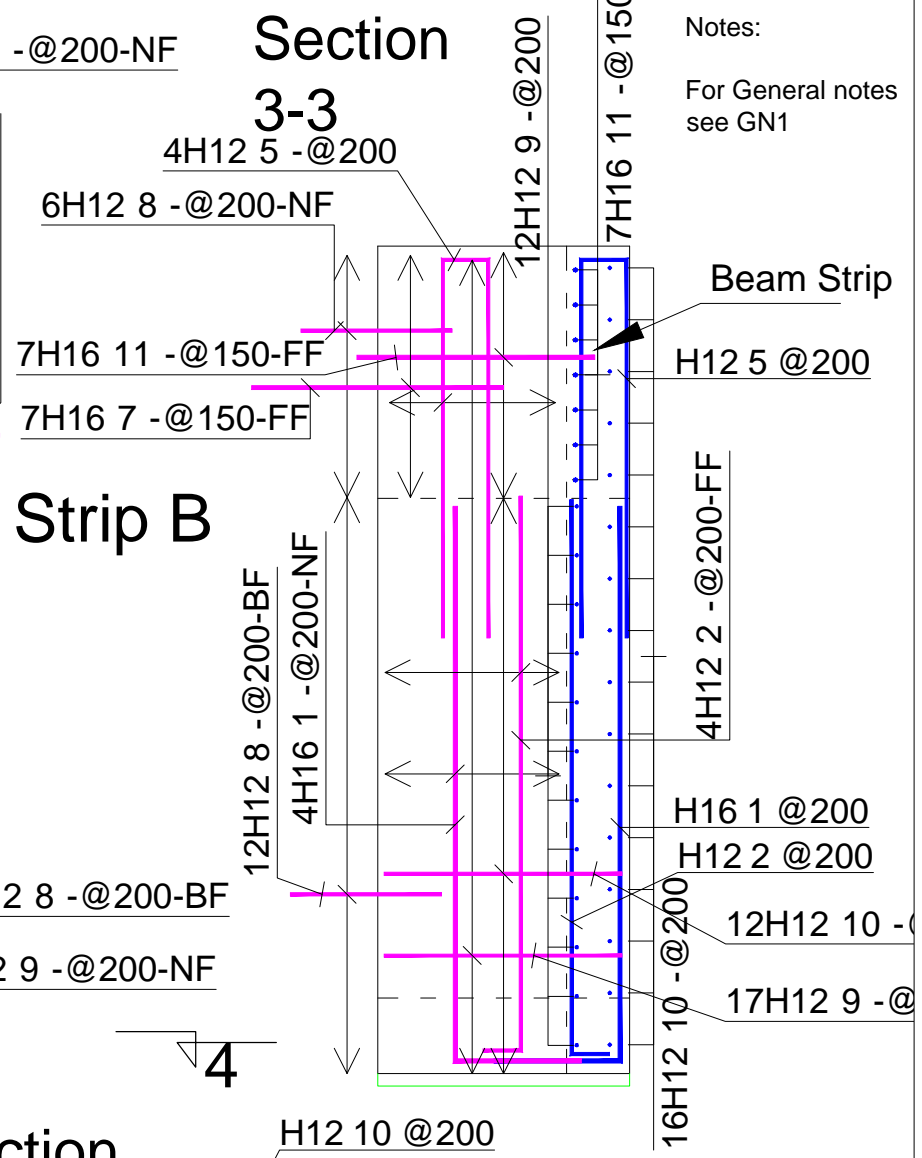
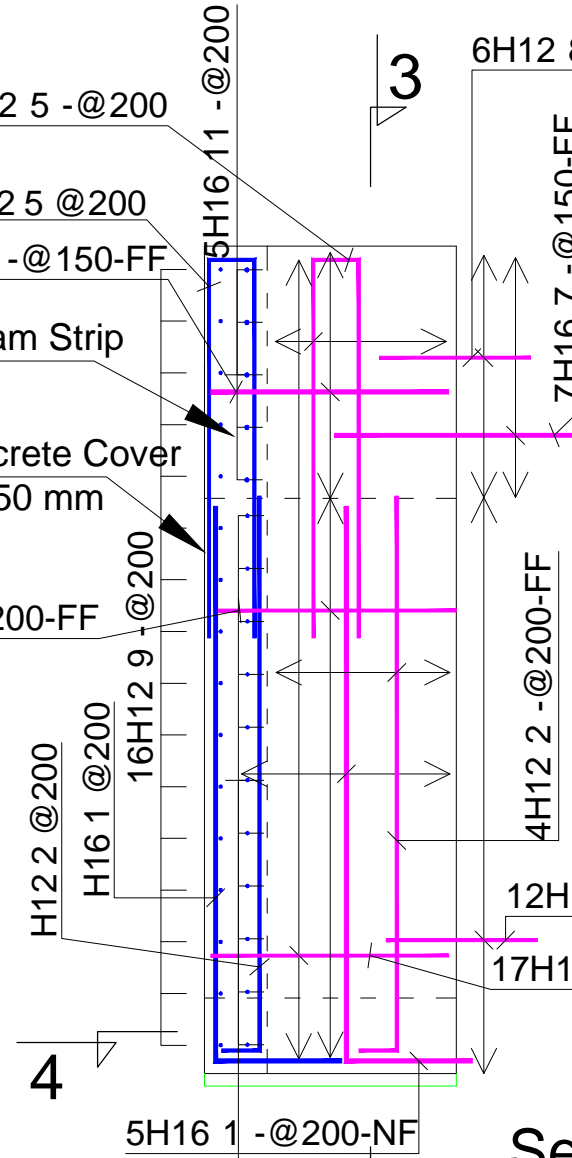
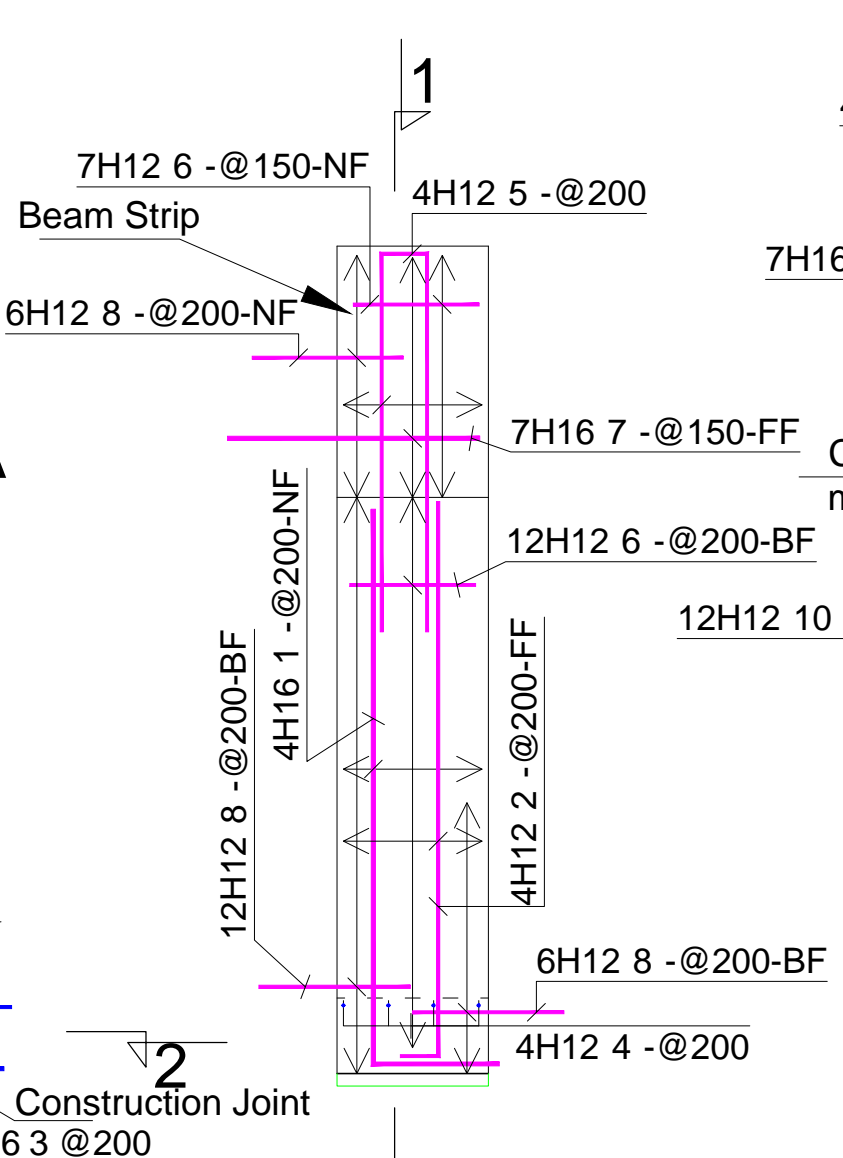
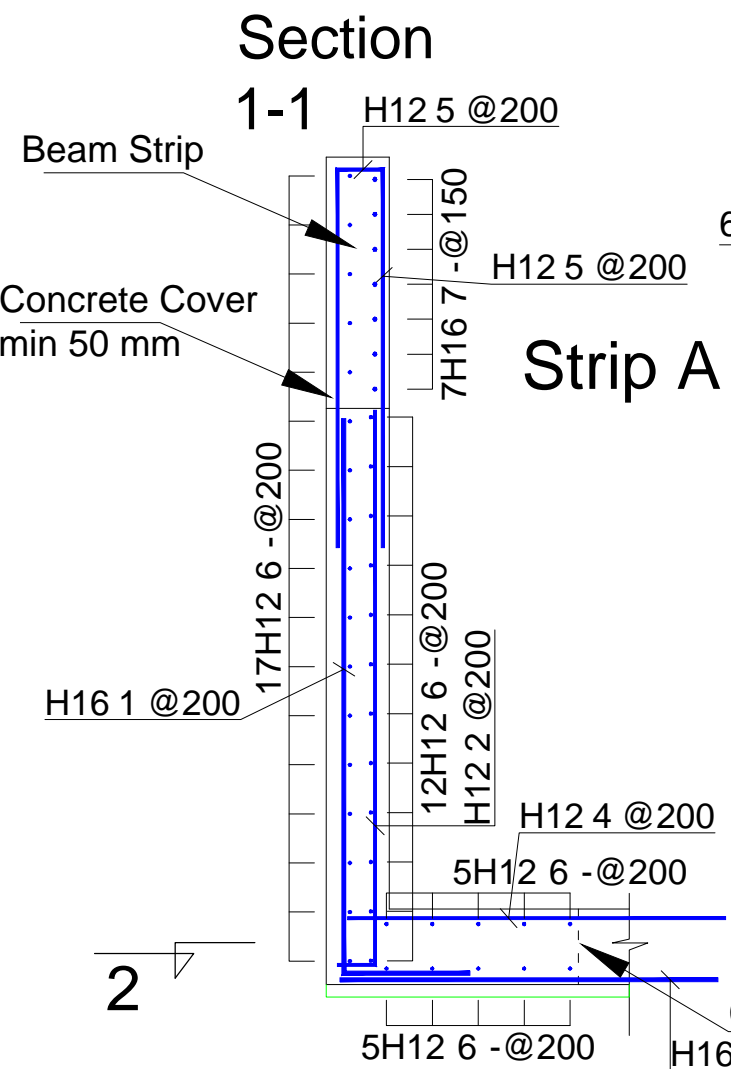


LIM ENGINEERING LTD
consulting engineers

15 Kinloch Drive, London, Nw9 7LL - Tel: 020 8205 1427
Fax: 020 8205 1427

Job No.	Drawing No.
00999	RC-01

Notes:
For General notes see GN1




RC Retaining walls (Lightwell front)
Strip A and Strip B



Information
General Notes
DO NOT SCALE FROM THIS DRAWING.
ALL DIMENSIONS TO BE VERIFIED ON SITE BY CONTRACTOR PRIOR TO COMMENCEMENT OF ANY SHOP DRAWINGS AND ANY WORK ON SITE. REPORT ALL DISCREPANCIES TO THE ARCHITECT/ENGINEER IMMEDIATELY. THIS DRAWING IS TO BE READ IN CONJUNCTION WITH ALL RELATED ARCHITECT/ ENGINEERS DRAWINGS / DETAILS AND ALL OTHER RELEVANT INFORMATION.

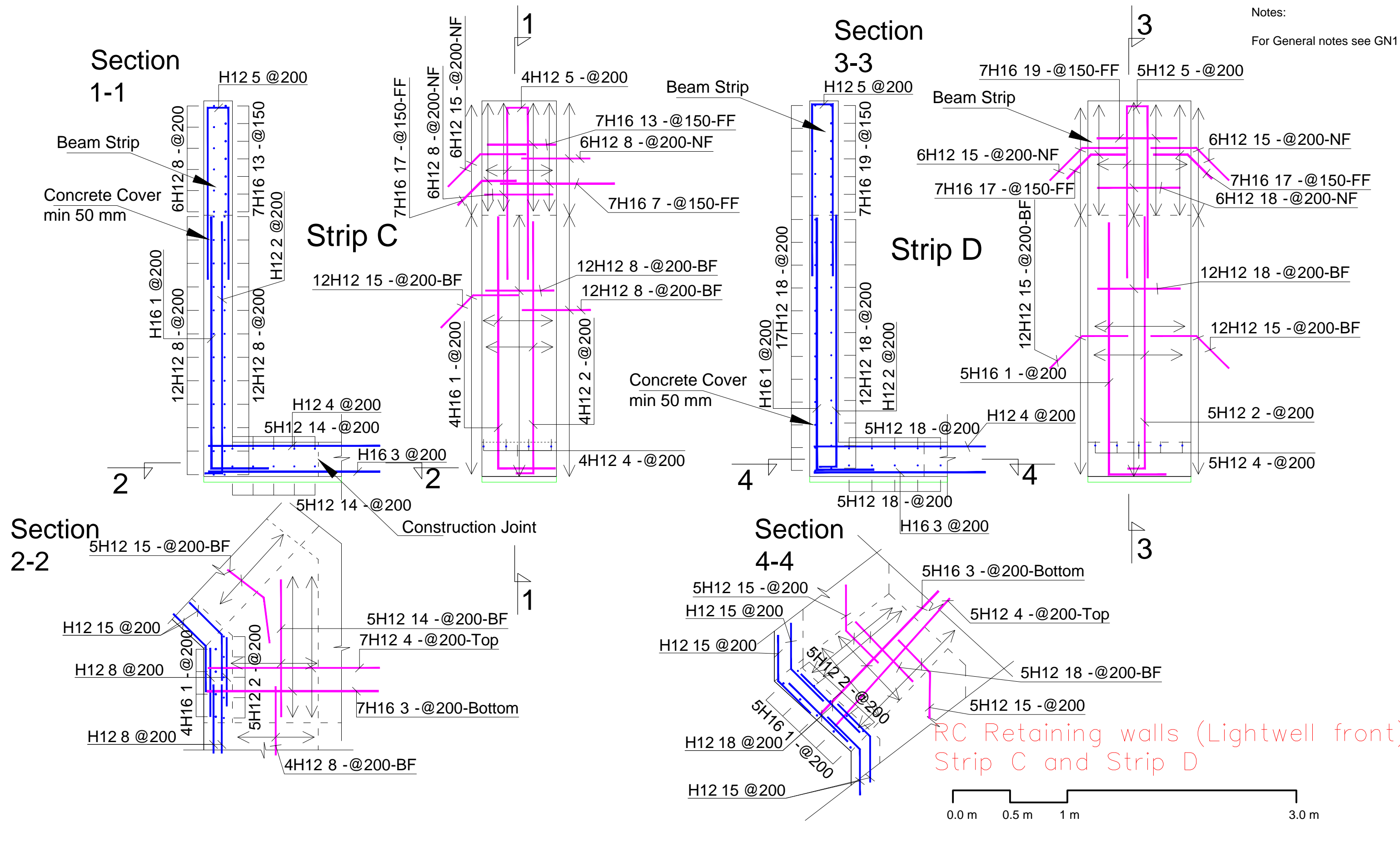
Notes
1. Concrete grade to be C_{28/35}
2. Reinforcement listed at bending schedule

Client
-
Project
158 Iversion Rd.
London NW6
Drawing Title
RC Detail -Lightwell R. wall-Strip A and B
Scale
1:30@A3
Date
May 2016



LIM ENGINEERING LTD
consulting engineers
15 Kinloch Drive, London, Nw9 7LL - Tel: 020 8205 1427
Fax: 020 8205 1427
Job No. 00999
Drawing No. RC-02


Notes:
For General notes see GN1



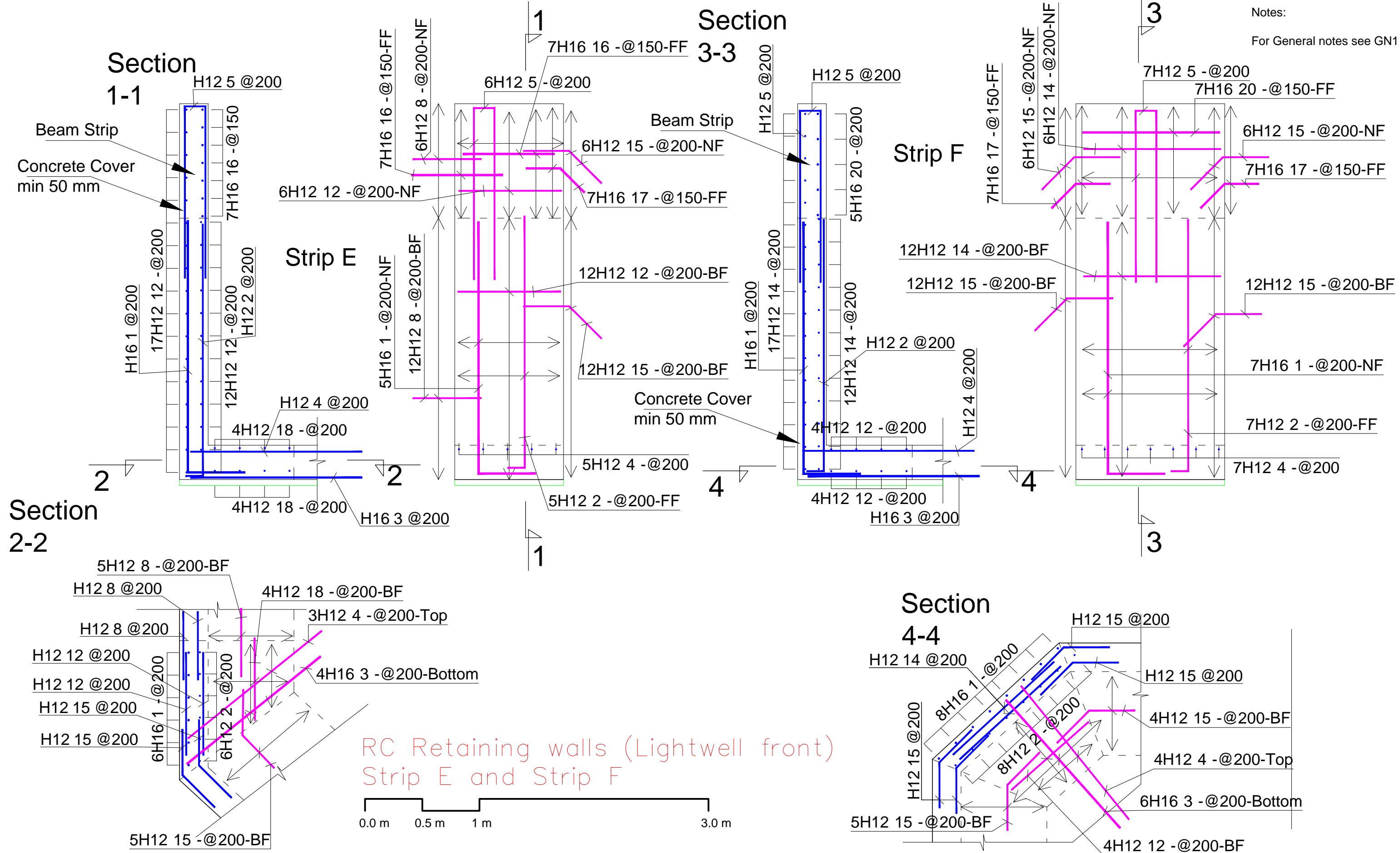
Information
 General Notes
 DO NOT SCALE FROM THIS DRAWING.
 ALL DIMENSIONS TO BE VERIFIED ON SITE BY CONTRACTOR PRIOR TO COMMENCEMENT OF ANY SHOP DRAWINGS AND ANY WORK ON SITE. REPORT ALL DISCREPANCIES TO THE ARCHITECT/ENGINEER IMMEDIATELY. THIS DRAWING IS TO BE READ IN CONJUNCTION WITH ALL RELATED ARCHITECT/ ENGINEERS DRAWINGS / DETAILS AND ALL OTHER RELEVANT INFORMATION.

- Notes
- Concrete grade to be C^{28/35}
 - Reinforcement listed at bending schedule

Client	-
Project	158 Iversion Rd. London NW6
Drawing Title	RC Detail -Lightwell R. wall-Strip C and D
Scale	1:30@A3
Date	May 2016


LIM ENGINEERING LTD
 consulting engineers
 15 Kinloch Drive, London, Nw9 7LL - Tel: 020 8205 1427
 Fax: 020 8205 1427
 Job No. 00999
 Drawing No. RC-03


Notes:
For General notes see GN1



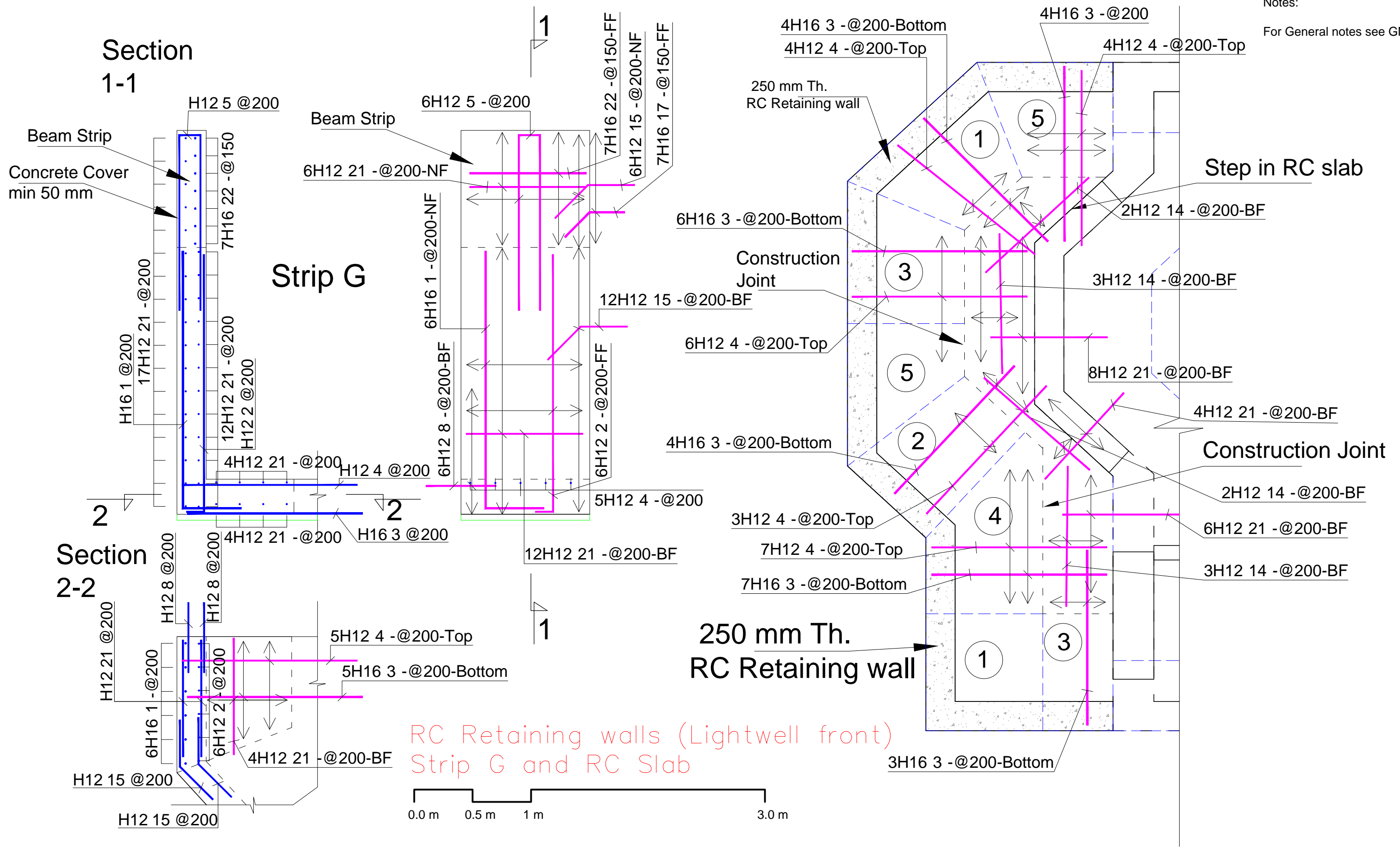
Information
General Notes
DO NOT SCALE FROM THIS DRAWING.
ALL DIMENSIONS TO BE VERIFIED ON SITE BY CONTRACTOR PRIOR TO COMMENCEMENT OF ANY SHOP DRAWINGS AND ANY WORK ON SITE. REPORT ALL DISCREPANCIES TO THE ARCHITECT/ENGINEER IMMEDIATELY. THIS DRAWING IS TO BE READ IN CONJUNCTION WITH ALL RELATED ARCHITECT/ ENGINEERS DRAWINGS / DETAILS AND ALL OTHER RELEVANT INFORMATION.

- Notes
- Concrete grade to be C^{28/35}
 - Reinforcement listed at bending schedule

Client	
-	
Project	
158 Iverson Rd. London NW6	
Drawing Title	
RC Detail -Lightwell R. wall-Strip E and F	
Scale	Date
1:30@A3	May 2016

 LIM ENGINEERING LTD consulting engineers	
15 Kinloch Drive, London, Nw9 7LL - Tel: 020 8205 1427 Fax: 020 8205 1427	
Job No.	Drawing No.
00999	RC-04

Notes:
For General notes see GN1



RC Retaining walls (Lightwell front)
Strip G and RC Slab

1. Concrete grade to be C^{28/35}
2. Reinforcement listed at bending schedule

Information
General Notes
DO NOT SCALE FROM THIS DRAWING.
ALL DIMENSIONS TO BE VERIFIED ON SITE BY CONTRACTOR PRIOR TO COMMENCEMENT OF ANY SHOP DRAWINGS AND ANY WORK ON SITE. REPORT ALL DISCREPANCIES TO THE ARCHITECT/ENGINEER IMMEDIATELY. THIS DRAWING IS TO BE READ IN CONJUNCTION WITH ALL RELATED ARCHITECT/ ENGINEERS DRAWINGS / DETAILS AND ALL OTHER RELEVANT INFORMATION.

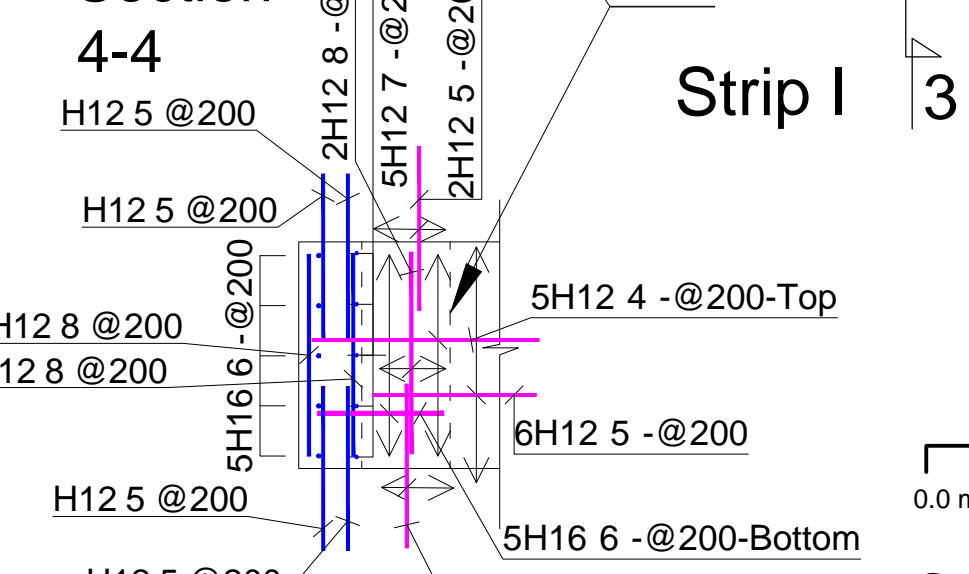
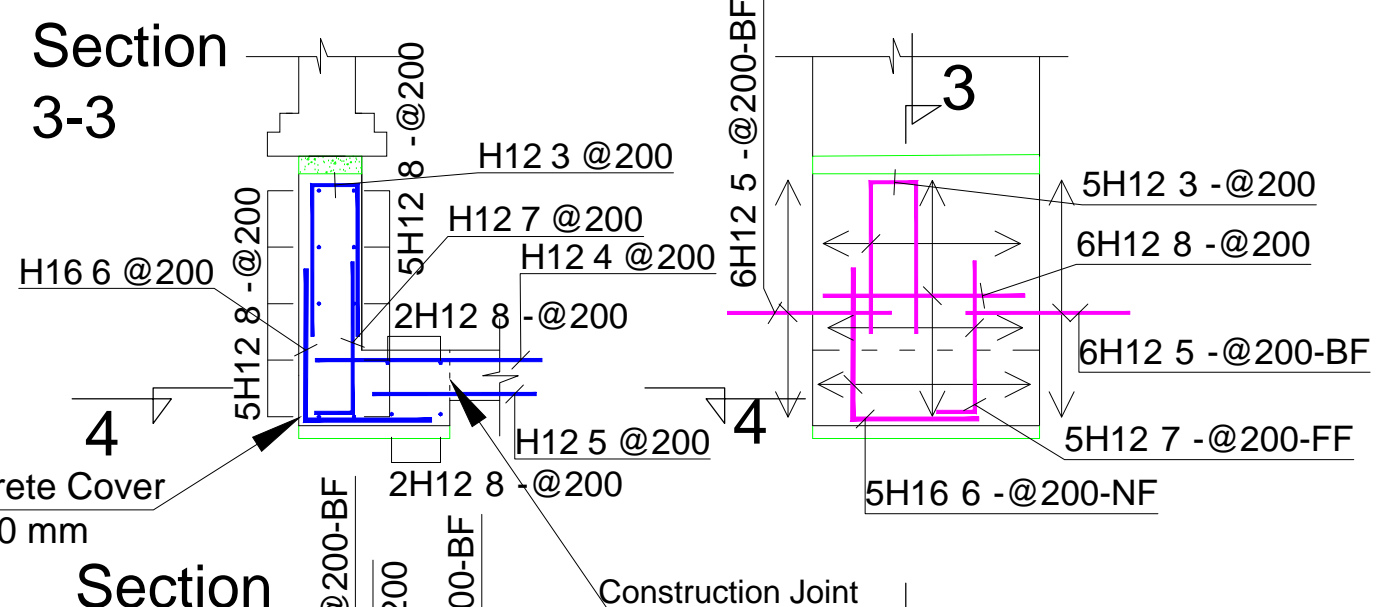
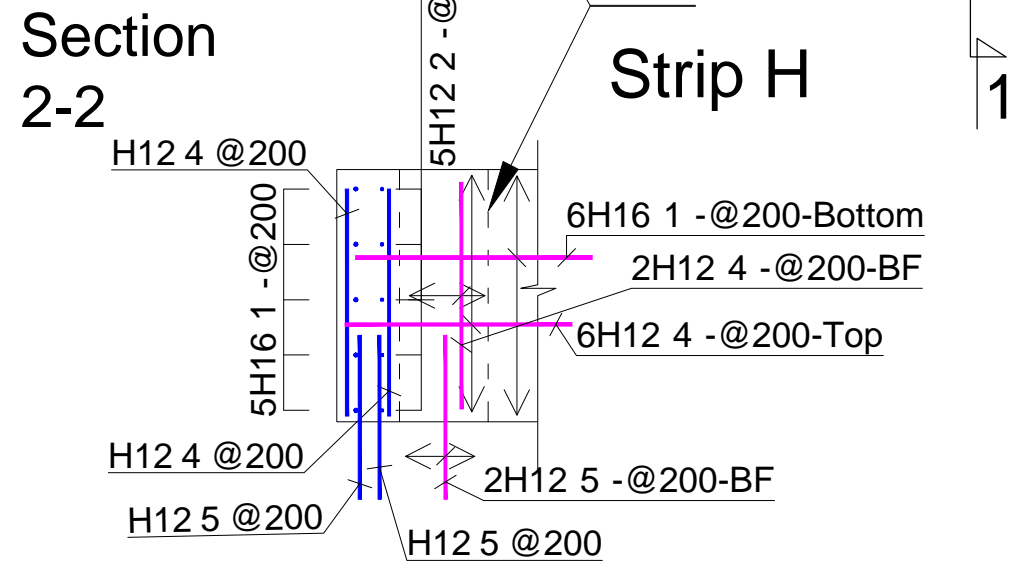
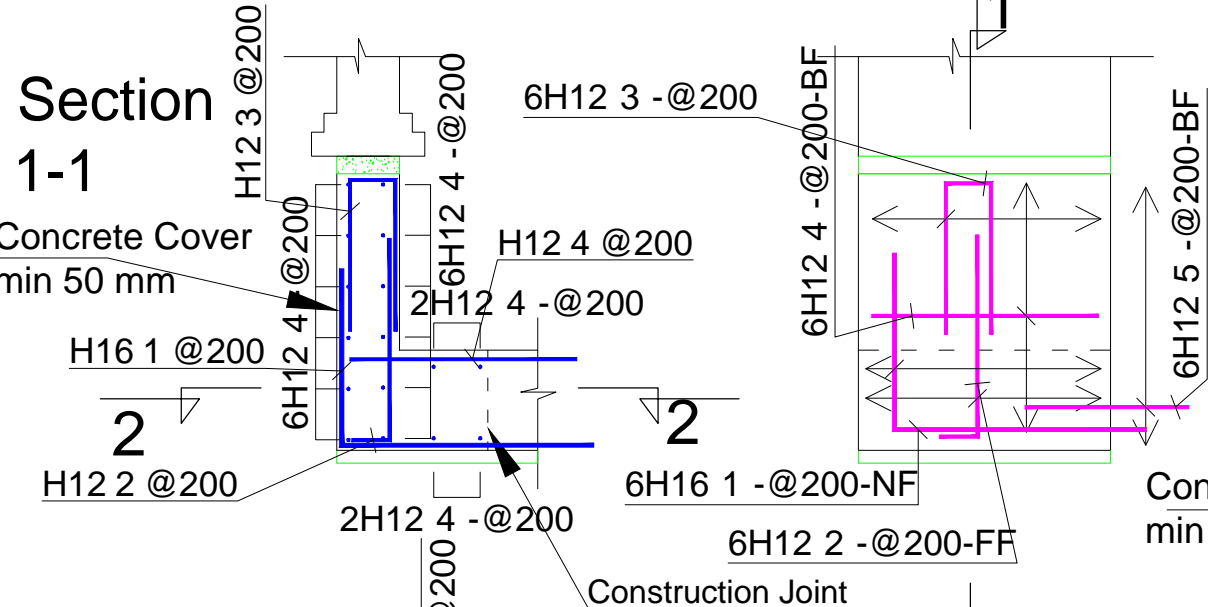
Notes

Client
-
Project
158 Iverson Rd.
London NW6
Drawing Title
RC Detail -Lightwell slab and R. wall-Strip G
Scale
1:30@A3
Date
May 2016

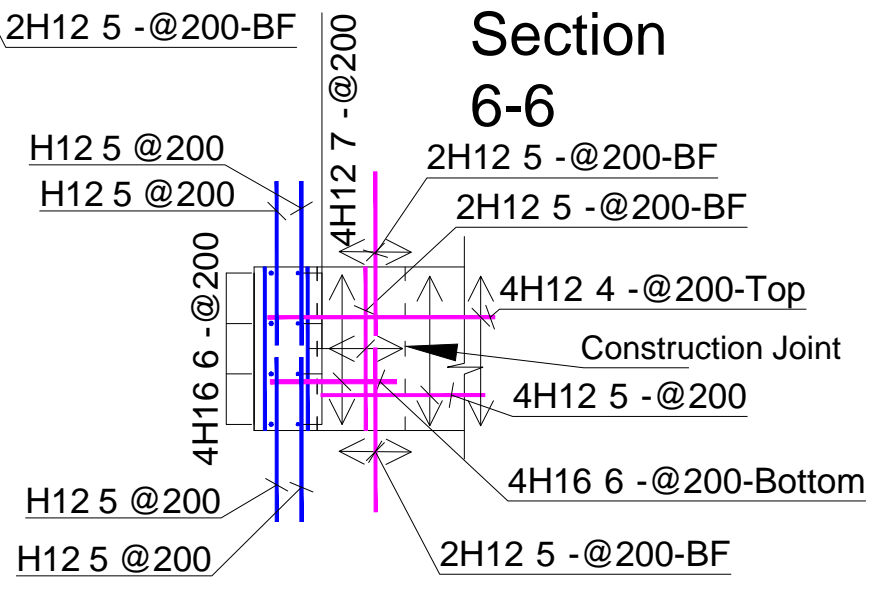
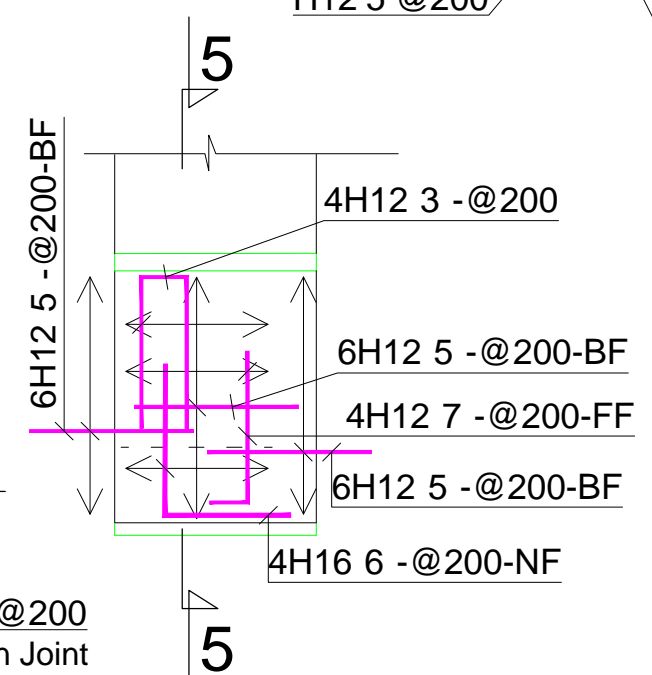
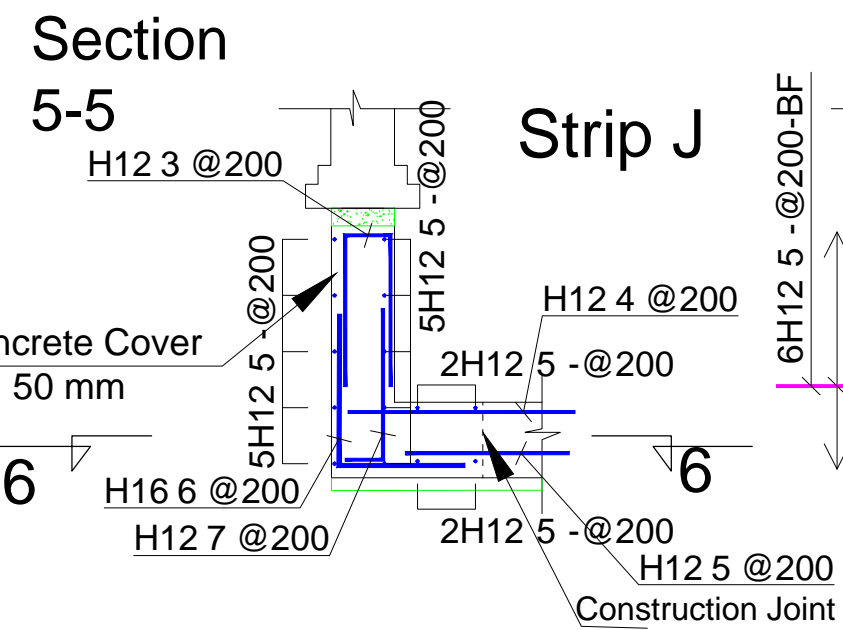
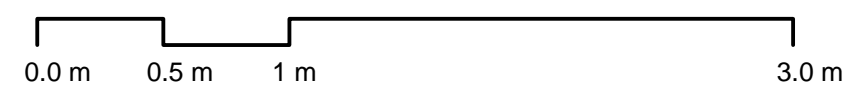
Client
-
Project
158 Iverson Rd.
London NW6
Drawing Title
RC Detail -Lightwell slab and R. wall-Strip G
Scale
1:30@A3
Date
May 2016

LIM ENGINEERING LTD
consulting engineers
15 Kinloch Drive, London, Nw9 7LL - Tel: 020 8205 1427
Fax: 020 8205 1427
Job No.
00999
Drawing No.
RC-05

Notes:
For General notes see GN1



RC Underpinning
Strip H, Strip I and J




Information
General Notes
DO NOT SCALE FROM THIS DRAWING.
ALL DIMENSIONS TO BE VERIFIED ON SITE BY CONTRACTOR PRIOR TO COMMENCEMENT OF ANY SHOP DRAWINGS AND ANY WORK ON SITE. REPORT ALL DISCREPANCIES TO THE ARCHITECT/ENGINEER IMMEDIATELY. THIS DRAWING IS TO BE READ IN CONJUNCTION WITH ALL RELATED ARCHITECT/ ENGINEERS DRAWINGS / DETAILS AND ALL OTHER RELEVANT INFORMATION.

- Notes
- Concrete grade to be C^{28/35}
 - Reinforcement listed at bending schedule

Client	-
Project	158 Iverson Rd. London NW6
Drawing Title	RC Detail -Underpinnings , Strip H and I and J
Scale	1:30@A3
Date	May 2016

Client

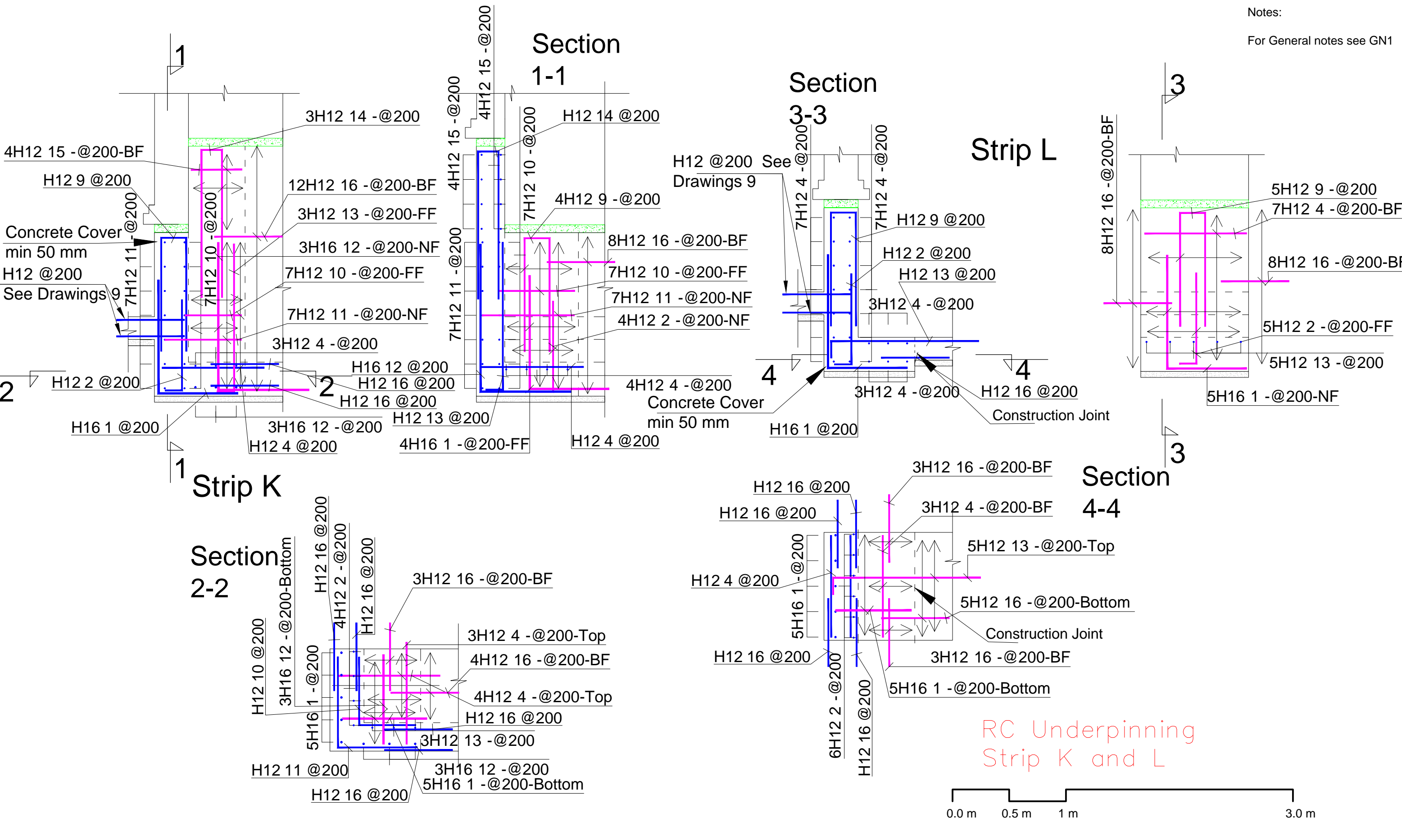


LIM ENGINEERING LTD
consulting engineers

15 Kinloch Drive, London, Nw9 7LL - Tel: 020 8205 1427
Fax: 020 8205 1427

Job No.	00999
Drawing No.	RC-06


Notes:
For General notes see GN1



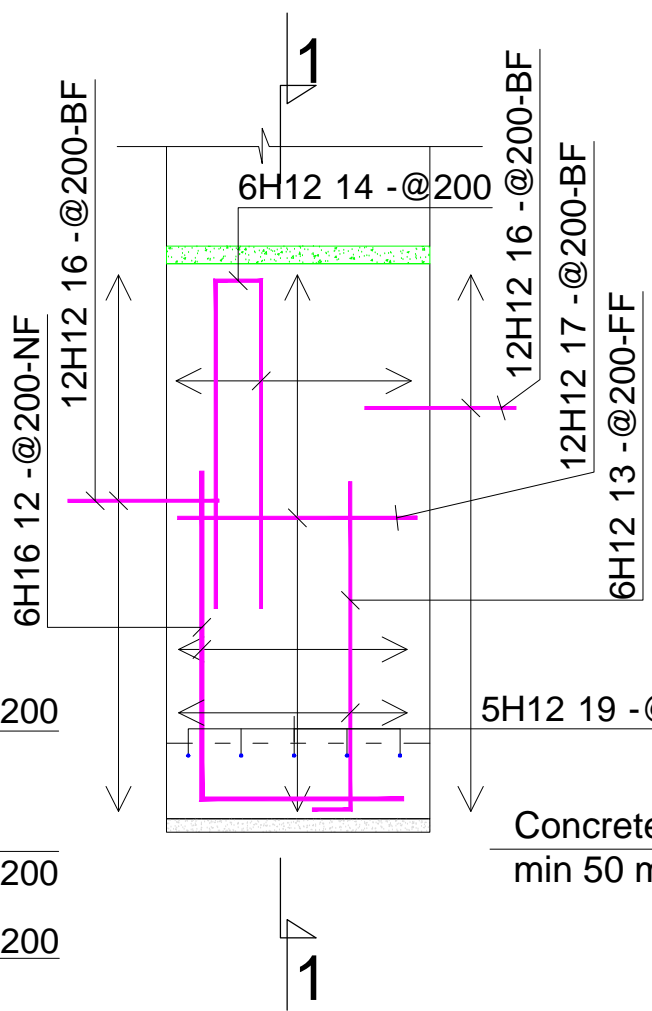
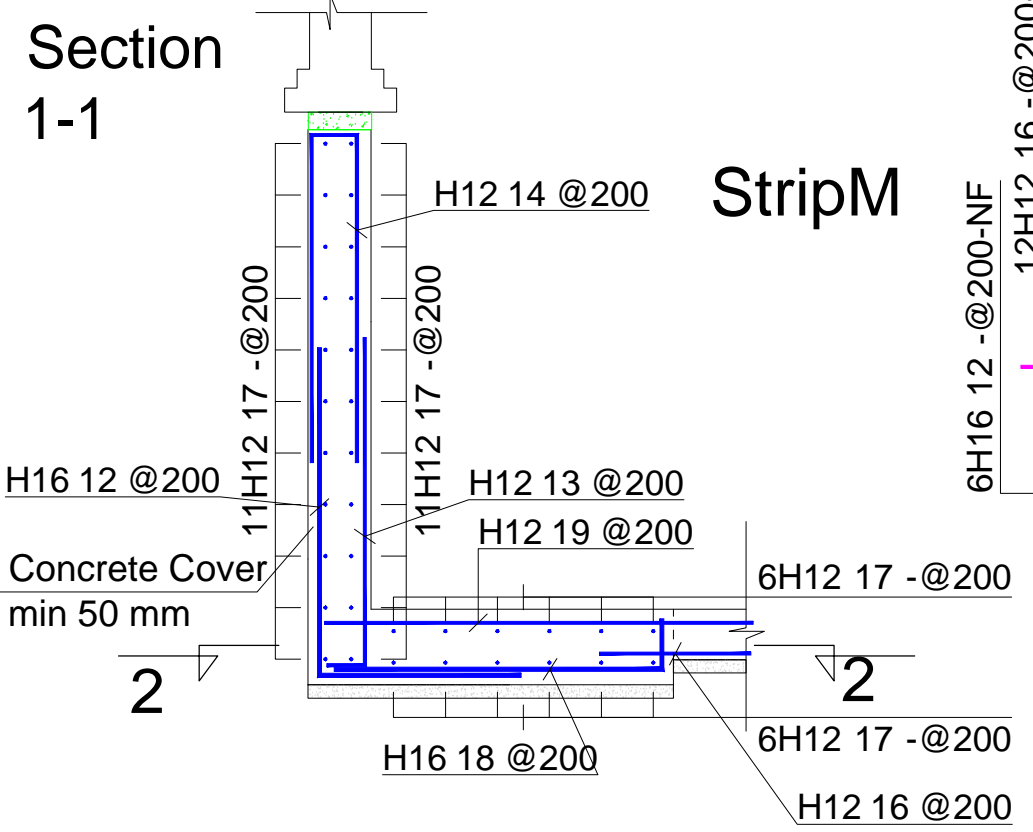
Information
General Notes
DO NOT SCALE FROM THIS DRAWING.
ALL DIMENSIONS TO BE VERIFIED ON SITE BY CONTRACTOR PRIOR TO COMMENCEMENT OF ANY SHOP DRAWINGS AND ANY WORK ON SITE. REPORT ALL DISCREPANCIES TO THE ARCHITECT/ENGINEER IMMEDIATELY. THIS DRAWING IS TO BE READ IN CONJUNCTION WITH ALL RELATED ARCHITECT/ ENGINEERS DRAWINGS / DETAILS AND ALL OTHER RELEVANT INFORMATION.

- Notes
- Concrete grade to be C^{28/35}
 - Reinforcement listed at bending schedule

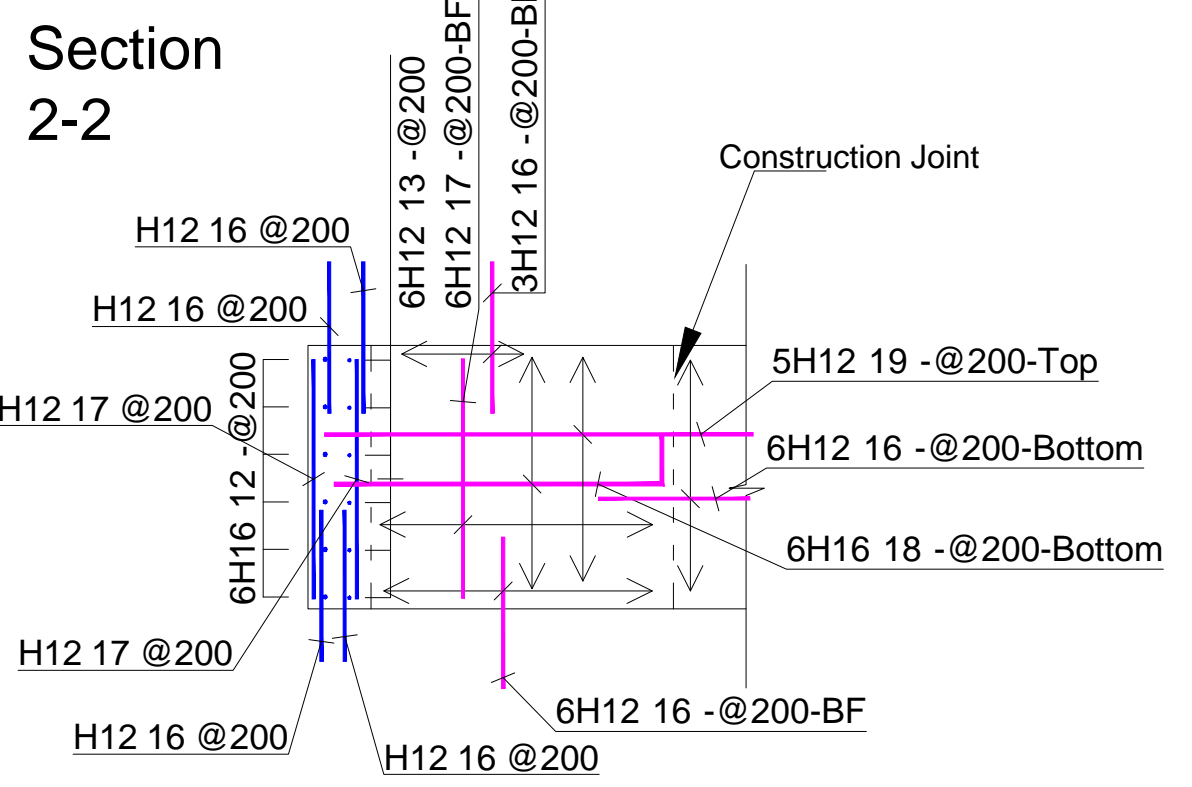
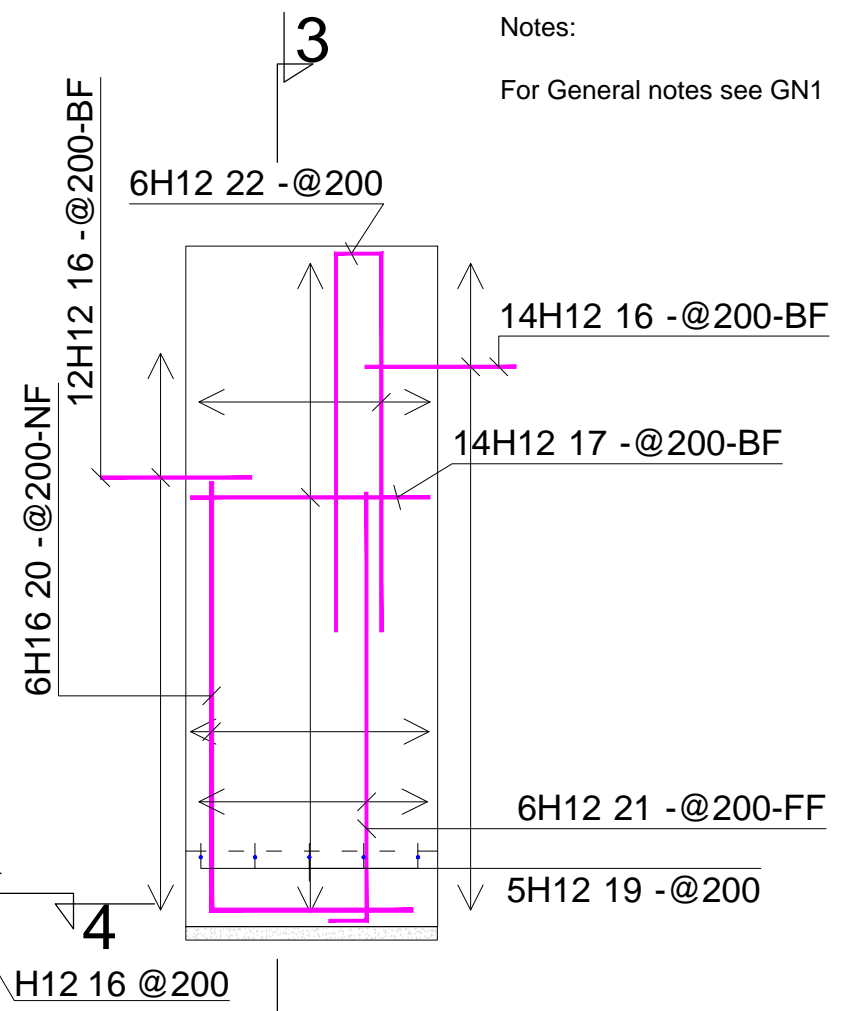
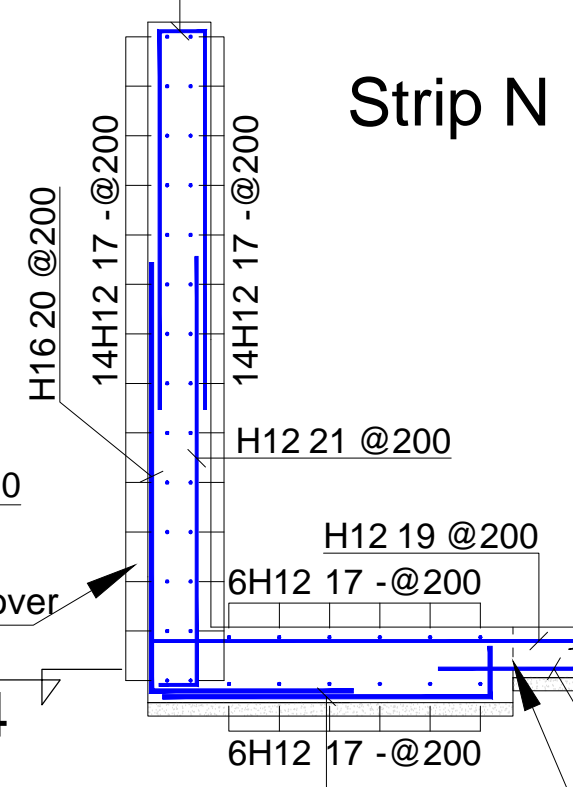
Client	
-	
Project	
158 Iverson Rd. London NW6	
Drawing Title	
RC Detail -Underpinnings , Strip K and L	
Scale	Date
1:30@A3	May 2016

 LIM ENGINEERING LTD consulting engineers	
15 Kinloch Drive, London, Nw9 7LL - Tel: 020 8205 1427 Fax: 020 8205 1427	
Client	Job No.
-	00999
Project	Drawing No.
158 Iverson Rd. London NW6	RC-07

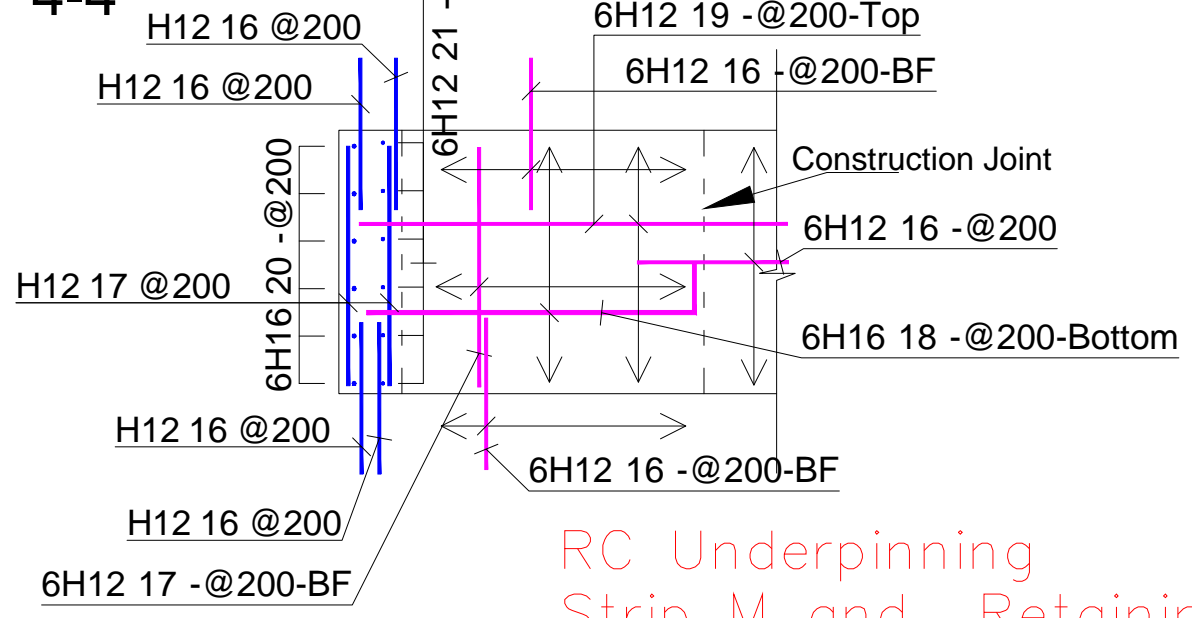
Notes:
For General notes see GN1



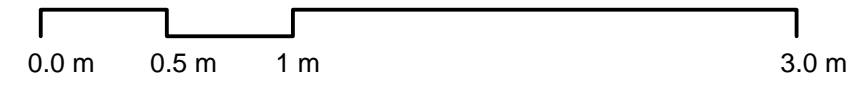
Section 3-3



Section 4-4



RC Underpinning
Strip M and Retaining wall Strip N



Information


General Notes

DO NOT SCALE FROM THIS DRAWING.
ALL DIMENSIONS TO BE VERIFIED ON SITE BY CONTRACTOR PRIOR TO COMMENCEMENT OF ANY SHOP DRAWINGS AND ANY WORK ON SITE. REPORT ALL DISCREPANCIES TO THE ARCHITECT/ENGINEER IMMEDIATELY. THIS DRAWING IS TO BE READ IN CONJUNCTION WITH ALL RELATED ARCHITECT/ ENGINEERS DRAWINGS / DETAILS AND ALL OTHER RELEVANT INFORMATION.

Notes

- Concrete grade to be C^{28/35}
- Reinforcement listed at bending schedule

Client	
-	
Project	
158 Iversion Rd. London NW6	
Drawing Title	
RC Detail -Underpinnings , Strip M and N	
Scale	Date
1:30@A3	May 2016



LIM ENGINEERING LTD
consulting engineers

15 Kinloch Drive, London, Nw9 7LL - Tel: 020 8205 1427
Fax: 020 8205 1427

Job No.	Drawing No.
00999	RC-08

Notes:
For General notes see GN1

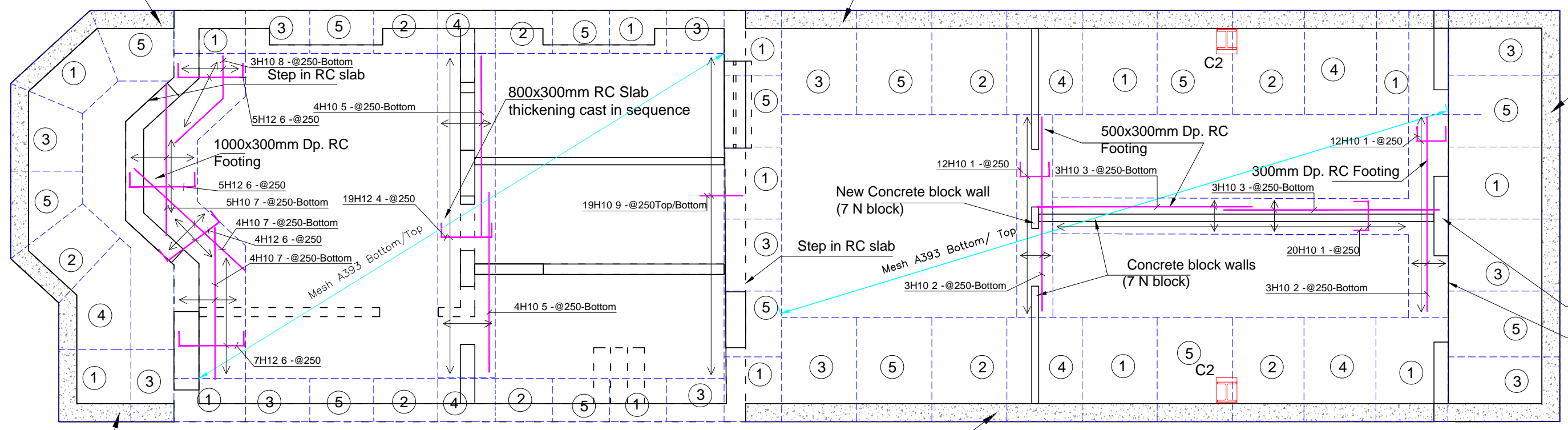
250 mm Th. RC Retaining wall

250 mm Th. RC Retaining wall

250 mm Th. RC Retaining wall

250 mm Th. RC Retaining wall

250 mm Th. RC Retaining wall



RC SLAB and WALL FOOTINGS



BEAM SCHEDULE:
Column
C1 - 203 UC 46

1. Concrete grade to be C²⁸/₃₅
2. Reinforcement listed at bending schedule

Information
General Notes
DO NOT SCALE FROM THIS DRAWING. ALL DIMENSIONS TO BE VERIFIED ON SITE BY CONTRACTOR PRIOR TO COMMENCEMENT OF ANY SHOP DRAWINGS AND ANY WORK ON SITE. REPORT ALL DISCREPANCIES TO THE ARCHITECT/ENGINEER IMMEDIATELY. THIS DRAWING IS TO BE READ IN CONJUNCTION WITH ALL RELATED ARCHITECT/ ENGINEERS DRAWINGS / DETAILS AND ALL OTHER RELEVANT INFORMATION.

Notes

Client
-
Project
158 Iverson Rd.
London NW6
Drawing Title
RC Detail -RC Slab
Scale
1:30@A3
Date
May 2016

Client
-
Project
158 Iverson Rd.
London NW6
Drawing Title
RC Detail -RC Slab
Scale
1:30@A3
Date
May 2016
Job No.
00999
Drawing No.
RC-09

LIM ENGINEERING LTD
consulting engineers
15 Kinloch Drive, London, Nw9 7LL - Tel: 020 8205 1427
Fax: 020 8205 1427

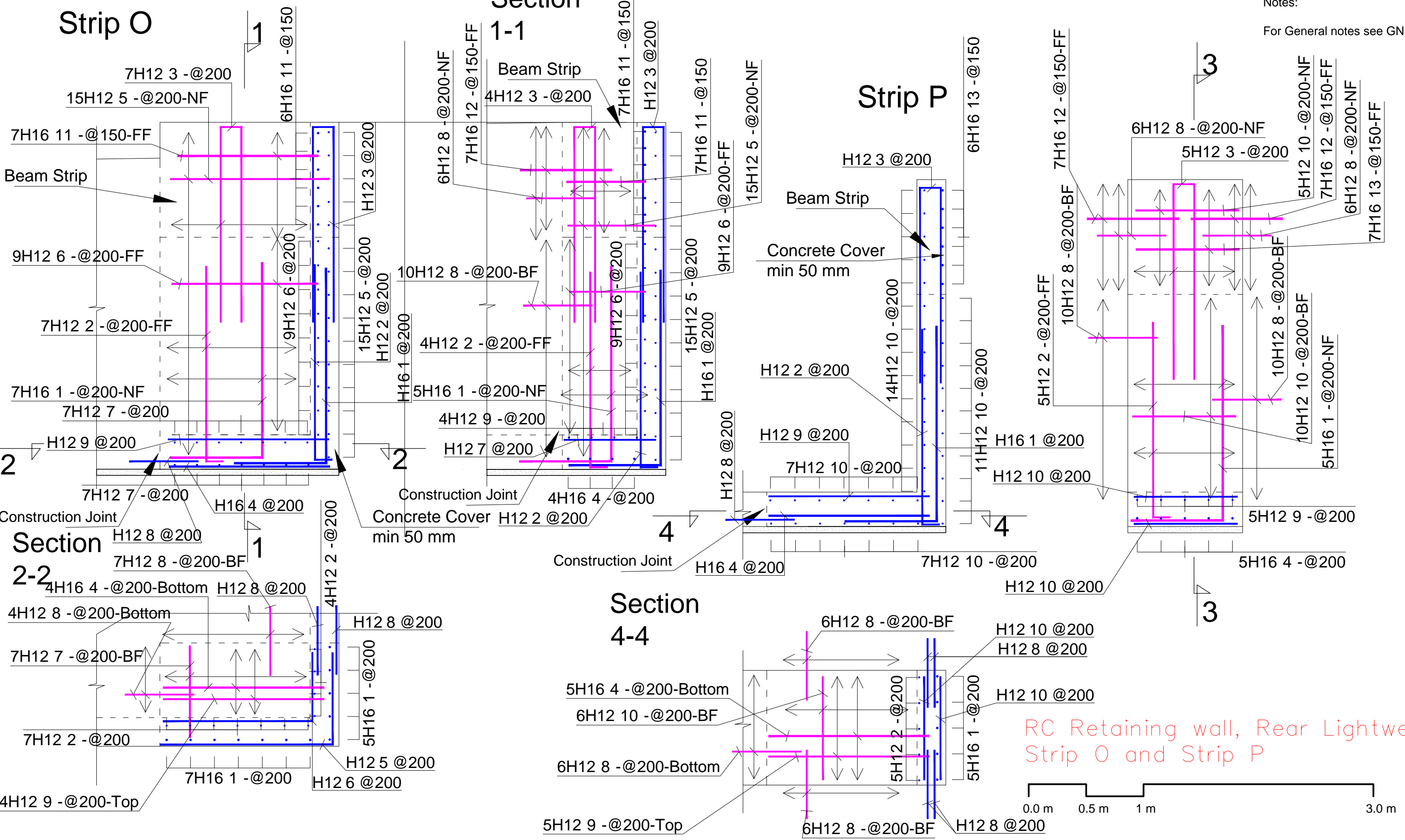
Strip O

Section 1-1

Strip P

Notes:

For General notes see GN1




RC Retaining wall, Rear Lightwell Strip O and Strip P

Information
 General Notes
 DO NOT SCALE FROM THIS DRAWING.
 ALL DIMENSIONS TO BE VERIFIED ON SITE BY CONTRACTOR PRIOR TO COMMENCEMENT OF ANY SHOP DRAWINGS AND ANY WORK ON SITE. REPORT ALL DISCREPANCIES TO THE ARCHITECT/ENGINEER IMMEDIATELY. THIS DRAWING IS TO BE READ IN CONJUNCTION WITH ALL RELATED ARCHITECT/ ENGINEERS DRAWINGS / DETAILS AND ALL OTHER RELEVANT INFORMATION.

- Notes**
- Concrete grade to be C^{28/35}
 - Reinforcement listed at bending schedule

Client	
-	
Project	
158 Iversen Rd. London NW6	
Drawing Title	
RC Detail -RC R. Wall , Rear Lightwell	
Scale	Date
1:30@A3	May 2016

 LIM ENGINEERING LTD consulting engineers	
15 Kinloch Drive, London, Nw9 7LL - Tel: 020 8205 1427 Fax: 020 8205 1427	
Client	Job No.
-	00999
Project	Drawing No.
158 Iversen Rd. London NW6	RC-10



DRG: RC-01, RC-02, RC-03

SCHED. 01

REV

LIM ENGINEERING LTD
consulting engineers

SITE REFERENCE: 158 Iversion Rd., London NW6

JOB. No. 00999

DATE: May, 2016

BENDING SCHEDULE FOR RC Retaining Wall (Lightwell front)
(This schedule conforms to BS 8666:2005)

SITUATION OR MEMEBER	BAR MARK	TYPE AND SIZE	NO. OF MEMBERS	NO. IN EACH	TOTAL NO.	LENGTH OF EACH BAR (mm)	SHAPE CODE	A (mm)	B (mm)	C (mm)	D (mm)	R (mm)
RC Retaining wall (Lightwell front) STRIP A	1	16	1	4	4	2700	12	500	2200			
	2	12	1	4	4	2350	12	150	2200			
	3	16	1	4	4	1500	00	1500				
	4	12	1	4	4	1500	00	1500				
	5	12	1	4	4	3180	21	1500	180	1500		
	6	12	1	41	41	500	00	500				
	7	16	1	7	7	1000	00	1000				
	8	12	1	45	45	600	00	600				
RC Retaining wall (Lightwell front) STRIP B	1	16	1	9	9	2700	12	500	2200			
	2	12	1	8	8	2350	12	150	2200			
	5	12	1	8	8	3180	21	1500	180	1500		
	7	16	1	17	17	1000	00	1000				
	8	12	1	50	50	600	00	600				
	9	12	1	16	16	1800	12	900	900			
	10	12	1	12	12	1400	12	700	700			
	11	16	1	7	7	1400	12	700	700			
	12	12	1	9	9	900	00	900				
RC Retaining wall (Lightwell front) STRIP C	1	16	1	4	4	2700	12	500	2200			
	2	12	1	4	4	2350	12	150	2200			
	3	16	1	7	7	1500	00	1500				
	4	12	1	7	7	1500	00	1500				
	5	12	1	4	4	3180	21	1500	180	1500		
	8	12	1	30	30	600	00	600				
	13	16	1	7	7	600	00	600				
	14	12	1	10	10	1200	00	1200				
	15	12	1	40	40	800	15	400	280	400		
	17	16	1	7	7	600	15	300	210	300		



LIM ENGINEERING LTD
consulting engineers

SITE REFERENCE: 158 Iversion Rd., London NW6

JOB. No. 00999

DATE: May, 2016

BENDING SCHEDULE FOR RC Retaining Wall (Lightwell front)
(This schedule conforms to BS 8666:2005)

SITUATION OR MEMEBER	BAR MARK	TYPE AND SIZE	NO. OF MEMBERS	NO. IN EACH	TOTAL NO.	LENGTH OF EACH BAR (mm)	SHAPE CODE	A (mm)	B (mm)	C (mm)	D (mm)	R (mm)
RC Retaining wall (Lightwell front) STRIP D	1	16	1	5	5	2700	12	500	2200			
	2	12	1	5	5	2350	12	150	2200			
	3	16	1	5	5	1500	00	1500				
	4	12	1	5	5	1500	00	1500				
	5	12	1	5	5	3180	21	1500	180	1500		
	15	12	1	40	40	800	15	400	280	400		
	17	16	1	7	7	600	15	300	210	300		
	18	12	1	40	40	700	00	700				
	19	16	1	7	7	700	00	700				
RC Retaining wall (Lightwell front) STRIP E	1	16	2	5	10	2700	12	500	2200			
	2	12	2	5	10	2350	12	150	2200			
	3	16	2	4	8	1500	00	1500				
	4	12	2	4	8	1500	00	1500				
	5	12	2	5	10	3180	21	1500	180	1500		
	8	12	2	20	40	600	00	600				
	12	12	2	30	60	900	00	900				
	16	16	2	14	28	800	00	800				
	18	12	2	8	16	700	00	700				
RC Retaining wall (Lightwell front) STRIP F	1	16	1	7	7	2700	12	500	2200			
	2	12	1	7	7	2350	12	150	2200			
	3	16	1	6	6	1500	00	1500				
	4	12	1	5	5	1500	00	1500				
	5	12	1	7	7	3180	21	1500	180	1500		
	12	12	1	8	8	900	00	900				
	14	12	1	30	30	1200	00	1200				
	15	12	1	78	78	800	15	400	280	400		
	17	16	1	14	14	600	15	300	210	300		
	20	16	1	7	7	1200	00	1200				



DRG: RC-01, RC-05

SCHED. 01

REV

LIM ENGINEERING LTD
consulting engineers

SITE REFERENCE: 158 Iversion Rd., London NW6

JOB. No. 00999

DATE: May, 2016

BENDING SCHEDULE FOR RC Retaining Wall (Lightwell front)
(This schedule conforms to BS 8666:2005)

SITUATION OR MEMEBER	BAR MARK	TYPE AND SIZE	NO. OF MEMBERS	NO. IN EACH	TOTAL NO.	LENGTH OF EACH BAR (mm)	SHAPE CODE	A (mm)	B (mm)	C (mm)	D (mm)	R (mm)
RC Retaining wall (Lightwell front) STRIP G	1	16	1	6	6	2700	500	2200				
	2	12	1	6	6	2350	150	2200				
	3	16	1	6	6	1500	00	1500				
	4	12	1	6	6	1500	00	1500				
	5	12	1	6	6	3180	21	1500	180	1500		
	8	12	1	12	12	600	00	600				
	21	12	1	38	38	1000	00	1000				
	22	16	1	7	7	1000	00	1000				
Light-well RC Slab	14	12	1	20	20	1200	00	1200				
	21	12	1	28	28	100	00	100				



DRG: RC-01, RC-06, RC-07

SCHED. 02

REV

LIM ENGINEERING LTD
consulting engineers

SITE REFERENCE: 158 Iversion Rd., London NW6

JOB. No. 00999

DATE: May, 2016

BENDING SCHEDULE FOR RC Underpinning
(This schedule conforms to BS 8666:2005)

SITUATION OR MEMEBER	BAR MARK	TYPE AND SIZE	NO. OF MEMBERS	NO. IN EACH	TOTAL NO.	LENGTH OF EACH BAR (mm)	SHAPE CODE	A (mm)	B (mm)	C (mm)	D (mm)	R (mm)
RC Underpinni. STRIP H	1	16	2	6	12	1700	12	700	1000			
	2	12	2	6	12	950	12	150	800			
	3	12	2	6	12	1380	21	600	180	600		
	4	12	2	22	44	900	00	900				
	5	12	2	16	32	650	00	650				
RC Underpinni. STRIP I	3	12	14	5	70	1380	21	600	180	600		
	4	12	14	5	70	900	00	900				
	5	12	14	22	308	650	00	650				
	6	16	14	5	70	1100	12	500	600			
	7	12	14	5	70	750	12	150	600			
	8	12	16	14	224	800	00	800				
RC Underpinni. STRIP J	3	12	2	4	8	1380	21	600	180	600		
	4	12	2	4	8	900	00	900				
	5	12	2	38	76	650	00	650				
	6	16	2	4	8	1100	12	500	600			
	7	12	2	4	8	750	12	150	600			
RC Underpinni. STRIP K	1	16	2	4	8	1700	12	700	1000			
	2	12	2	4	8	950	12	150	800			
	4	12	2	7	14	900	00	900				
	9	12	2	4	8	2220	21	1000	220	1000		
	10	12	2	7	14	1100	12	500	600			
	11	12	2	7	14	1500	12	700	800			
	12	16	2	3	6	2100	12	800	1300			
	13	12	2	3	6	1450	12	150	1300			
	14	12	2	3	6	2780	21	1300	180	1300		
	15	12	2	8	16	450	00	450				
	16	12	2	54	108	600	00	600				



LIM ENGINEERING LTD
consulting engineers

SITE REFERENCE: 158 Iversion Rd., London NW6

JOB. No. 00999

DATE: May, 2016

BENDING SCHEDULE FOR RC RC Underpinning
(This schedule conforms to BS 8666:2005)

SITUATION OR MEMEBER	BAR MARK	TYPE AND SIZE	NO. OF MEMBERS	NO. IN EACH	TOTAL NO.	LENGTH OF EACH BAR (mm)	SHAPE CODE	A (mm)	B (mm)	C (mm)	D (mm)	R (mm)
RC Underpinni. STRIP L	1	16	4	5	20	1700	12	700	1000			
	2	12	4	5	20	950	12	800	150			
	4	12	4	20	100	900	00	900				
	9	12	4	5	20	2220	21	1000	220	1000		
	13	12	4	5	20	1450	12	150	1300			
	16	12	4	27	108	600	00	600				
RC Underpinni. STRIP M	12	16	12	6	72	2100	12	800	1300			
	13	12	12	6	72	1450	12	150	1300			
	14	12	12	6	72	2780	21	1300	180	1300		
	16	12	12	42	504	600	00	600				
	17	12	12	36	432	950	00	950				
	18	16	12	6	72	1500	12	200	1300			
	19	12	12	5	60	1700	00	1700				
RC Underpinni. STRIP N	16	12	6	46	276	600	00	600				
	17	12	6	40	240	950	00	950				
	18	16	6	6	36	1500	12	200	1300			
	19	12	6	6	36	1700	00	1700				
	20	16	6	6	36	2500	12	800	1700			
	21	12	6	6	36	1850	12	150	1700			
	22	12	6	6	36	3180	21	1500	180	1500		



DRG: RC-09

SCHED. 03

REV

LIM ENGINEERING LTD
consulting engineers

SITE REFERENCE: **158 Iversion Rd., London NW6**

JOB. No. **00999**

DATE: **May, 2016**

BENDING SCHEDULE FOR RC SLAB and WALL FOTTINGS
(This schedule conforms to BS 8666:2005)

SITUATION OR MEMEBER	BAR MARK	TYPE AND SIZE	NO. OF MEMBERS	NO. IN EACH	TOTAL NO.	LENGTH OF EACH BAR (mm)	SHAPE CODE	A (mm)	B (mm)	C (mm)	D (mm)	R (mm)
RC SLAB and Wall Footings	1	10	1	44	44	800	21	200	400	200		
	2	10	1	6	6	2700	00	2700				
	3	10	1	6	6	3000	00	3000				
	4	12	1	19	19	1100	21	200	700	200		
	5	10	1	8	8	2500	00	2500				
	6	12	1	21	21	1300	21	200	900	200		
	7	10	1	13	13	2100	00	2100				
	8	10	1	3	3	1500	15	600	450	900		
	9	10	1	38	38	600	00	600				
MESH A393				$115 \text{ m}^2 + 10 \% (115 \text{ m}^2) = 125 \text{ m}^2$ TOATAL : 125 m²								



LIM ENGINEERING LTD
consulting engineers

SITE REFERENCE: 158 Iversion Rd., London NW6

JOB. No. 00999

DATE: May, 2016

BENDING SCHEDULE FOR RC Retaining wall (Light-well Rear)
(This schedule conforms to BS 8666:2005)

SITUATION OR MEMEBER	BAR MARK	TYPE AND SIZE	NO. OF MEMBERS	NO. IN EACH	TOTAL NO.	LENGTH OF EACH BAR (mm)	SHAPE CODE	A (mm)	B (mm)	C (mm)	D (mm)	R (mm)
RC Retaining wall (Light-well Rear) STRIP O	1	16	2	12	24	2500	12	800	1700			
	2	12	2	11	22	1850	12	150	1700			
	3	12	2	11	22	3580	21	1700	180	1700		
	4	16	2	4	8	1400	00	1400				
	5	12	2	15	30	2300	12	800	1500			
	6	12	2	9	18	1900	12	600	1300			
	7	12	2	14	28	800	00	800				
	8	12	2	44	88	600	00	600				
	9	12	2	4	8	1400	00	1400				
	11	16	2	7	14	1900	12	600	1300			
	12	16	2	7	14	800	00	800				
	RC Retaining wall (Light-well Rear) STRIP P	1	16	4	5	20	2500	12	800	1700		
2		12	4	5	20	1850	12	150	1700			
3		12	4	5	20	3580	21	1700	180	1700		
4		16	4	5	20	1400	00	1400				
8		12	4	44	176	600	00	600				
9		12	4	5	20	1400	00	1400				
10		12	4	38	152	900	00	900				
12		16	4	7	28	800	00	800				
13		16	4	7	20	900	00	900				