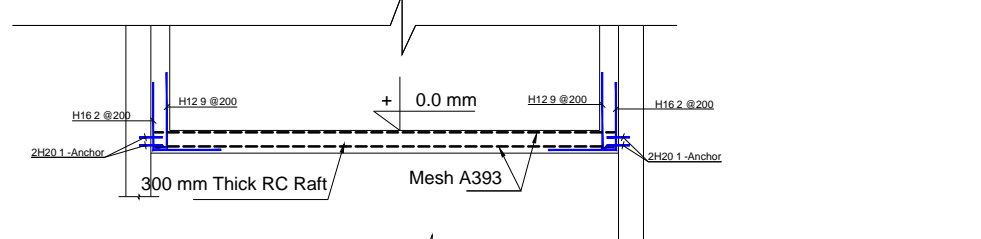
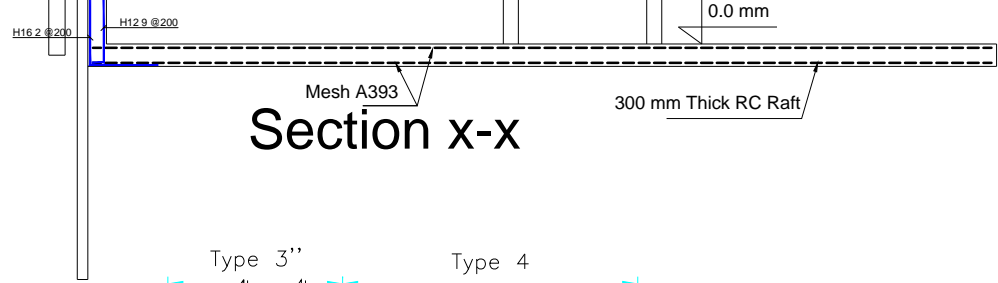


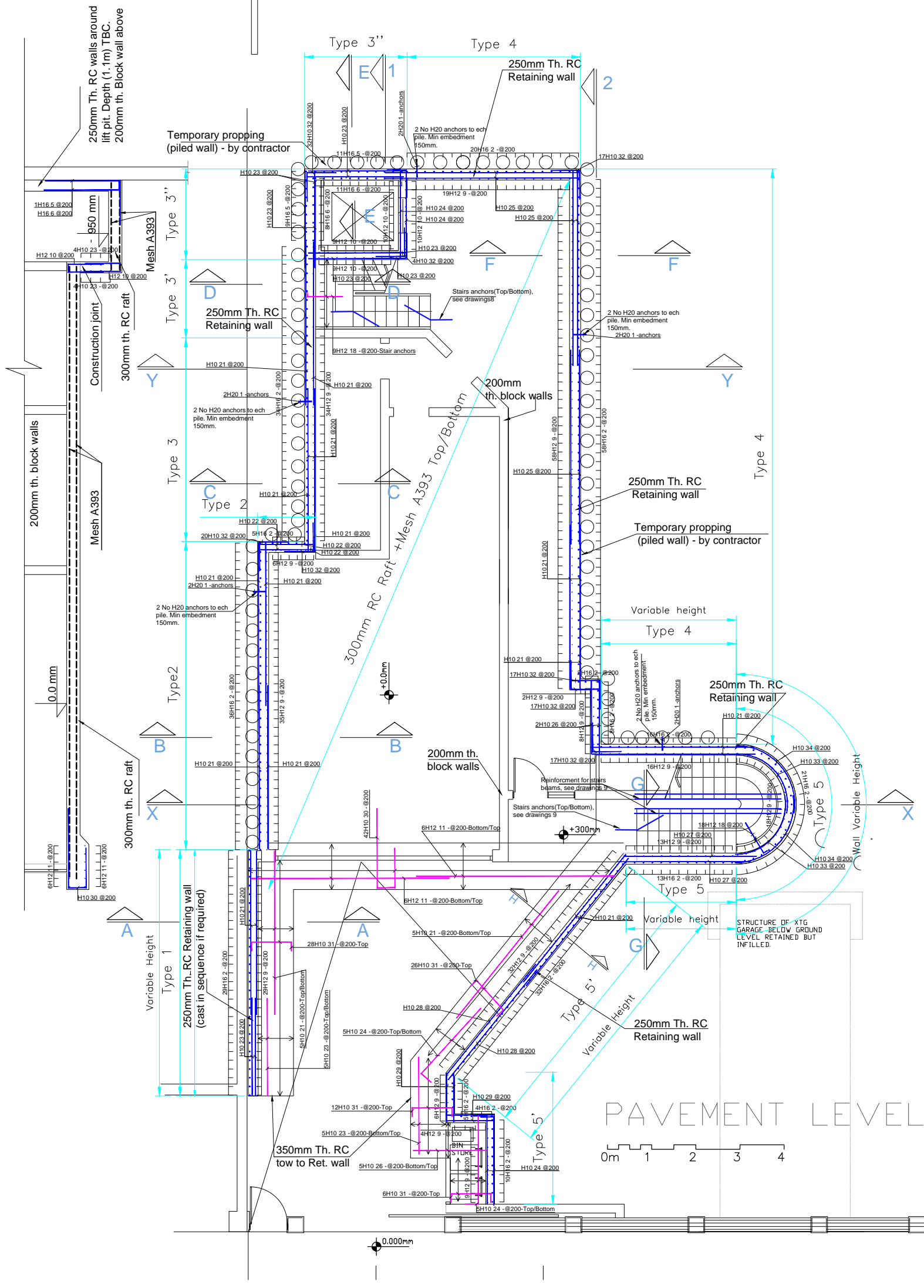
Section y-y



Section x-x



Section 1-1




Notes:
For general notes see GN1

No. 101

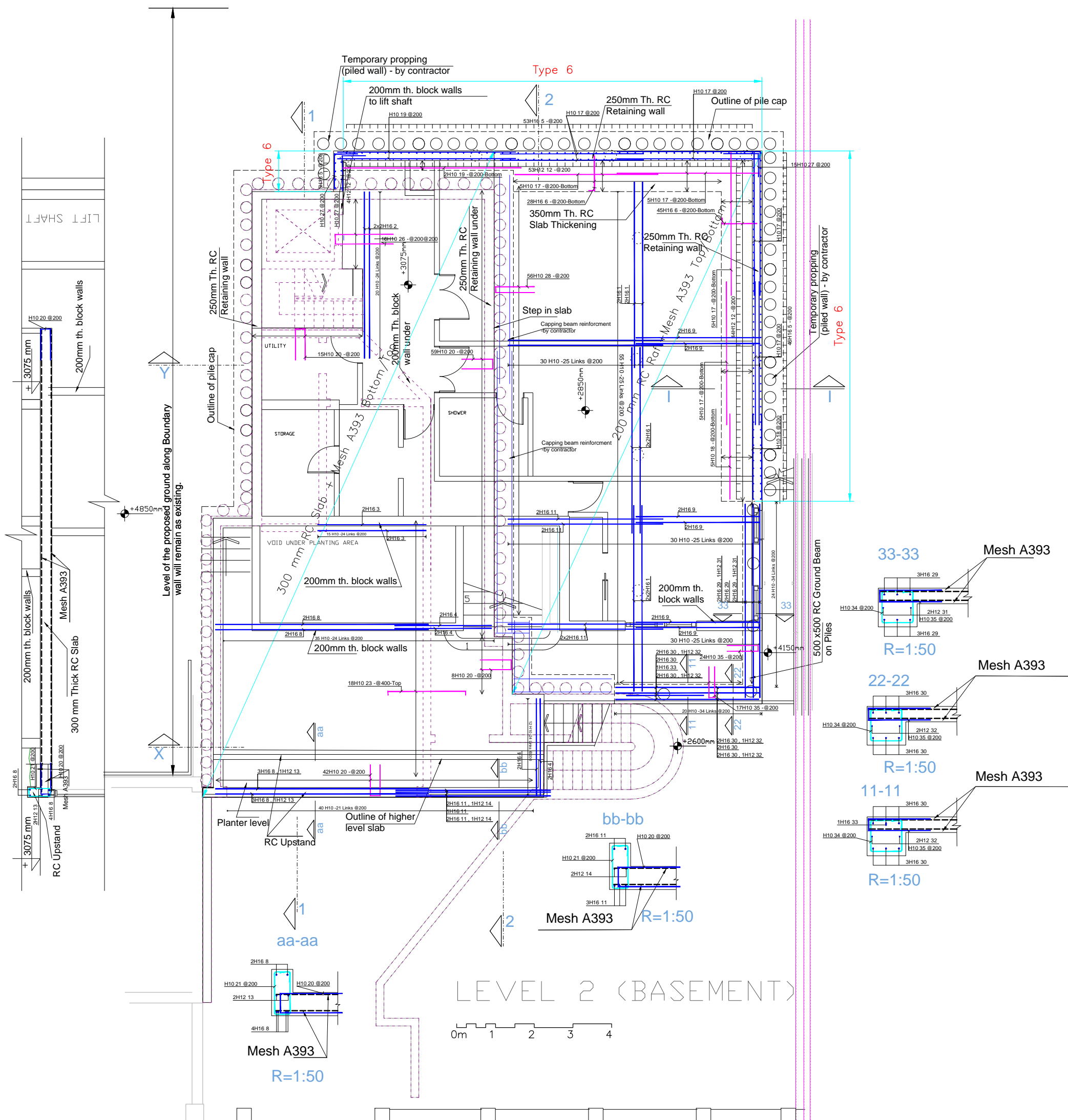
Issued For	Notes
Construction	
General Notes	
DO NOT SCALE FROM THIS DRAWING. ALL DIMENSIONS TO BE VERIFIED ON SITE BY CONTRACTOR PRIOR TO COMMENCEMENT OF ANY SHOP DRAWINGS AND ANY WORK ON SITE. REPORT ALL DISCREPANCIES TO THE ARCHITECT/ENGINEER IMMEDIATELY. THIS DRAWING IS TO BE READ IN CONJUNCTION WITH ALL RELATED ARCHITECT/ENGINEERS DRAWINGS / DETAILS AND ALL OTHER RELEVANT INFORMATION.	

Client	-
Project	99 WEST HEATH RAD London NW3
Drawing Title	RC-Detail-Pavement level
Scale	1:100@A3
Date	Feb.2016

 <p>LIM ENGINEERING LTD consulting engineers</p>	
15 Kinloch Drive, London NW9 7LL - Tel: 0208 205 1427 Fax: 0208 205 1427	
Job No.	Drawing No.
00946	RC-01

Notes:


For general notes see GN1



Issued For
Construction
 General Notes
 DO NOT SCALE FROM THIS DRAWING. ALL DIMENSIONS TO BE VERIFIED ON SITE BY CONTRACTOR PRIOR TO COMMENCEMENT OF ANY SHOP DRAWINGS AND ANY WORK ON SITE. REPORT ALL DISCREPANCIES TO THE ARCHITECT/ENGINEER IMMEDIATELY. THIS DRAWING IS TO BE READ IN CONJUNCTION WITH ALL RELATED ARCHITECT/ENGINEERS DRAWINGS / DETAILS AND ALL OTHER RELEVANT INFORMATION.

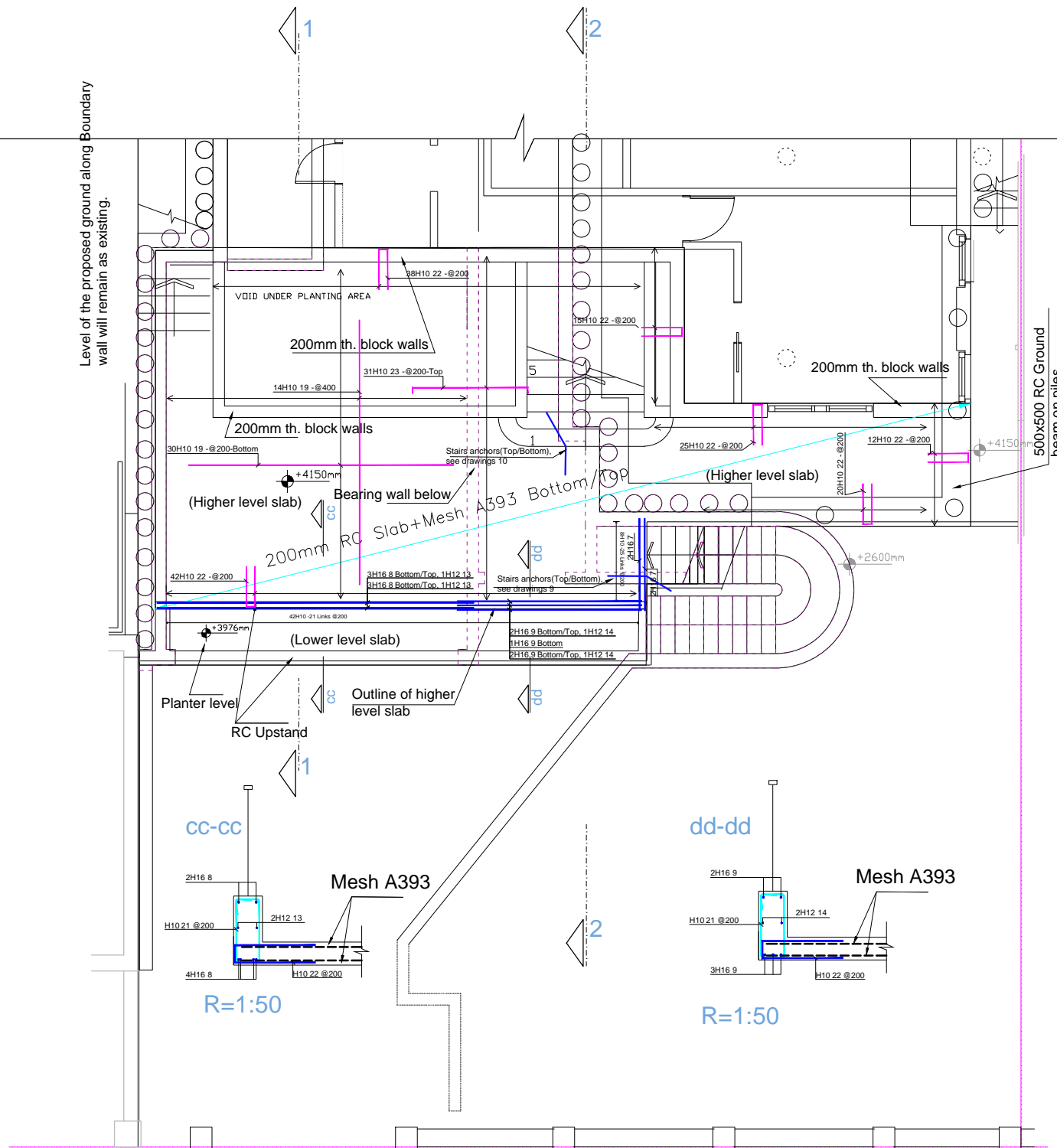
Notes

Client
 Project
**99 WEST HEATH RAD
 London NW3**
 Drawing Title
RC-Detail -Basement floor level
 Scale
1:100@A3
 Date
Feb. 2016

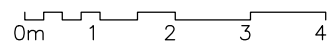
Client

**LIM ENGINEERING LTD
 consulting engineers**
 15 Kinloch Drive, London NW9 7LL - Tel: 0208 205 1427
 Fax: 0208 205 1427
 Job No.
00946
 Drawing No.
RC-02-Rev A

Notes:

For general notes see GN1



LEVEL 2 (BASEMENT)



Construction

General Notes

DO NOT SCALE FROM THIS DRAWING.
ALL DIMENSIONS TO BE VERIFIED ON SITE BY CONTRACTOR PRIOR TO COMMENCEMENT OF ANY SHOP DRAWINGS AND ANY WORK ON SITE. REPORT ALL DISCREPANCIES TO THE ARCHITECT/ENGINEER IMMEDIATELY. THIS DRAWING IS TO BE READ IN CONJUNCTION WITH ALL RELATED ARCHITECT/ ENGINEERS DRAWINGS / DETAILS AND ALL OTHER RELEVANT INFORMATION.

Notes

Client

-
-
-
Project
**99 WEST HEATH RAD
London NW3**
Drawing Title
RC-Detail Higher level basement slab
Scale
1:100@A3
Date
Feb. 2016

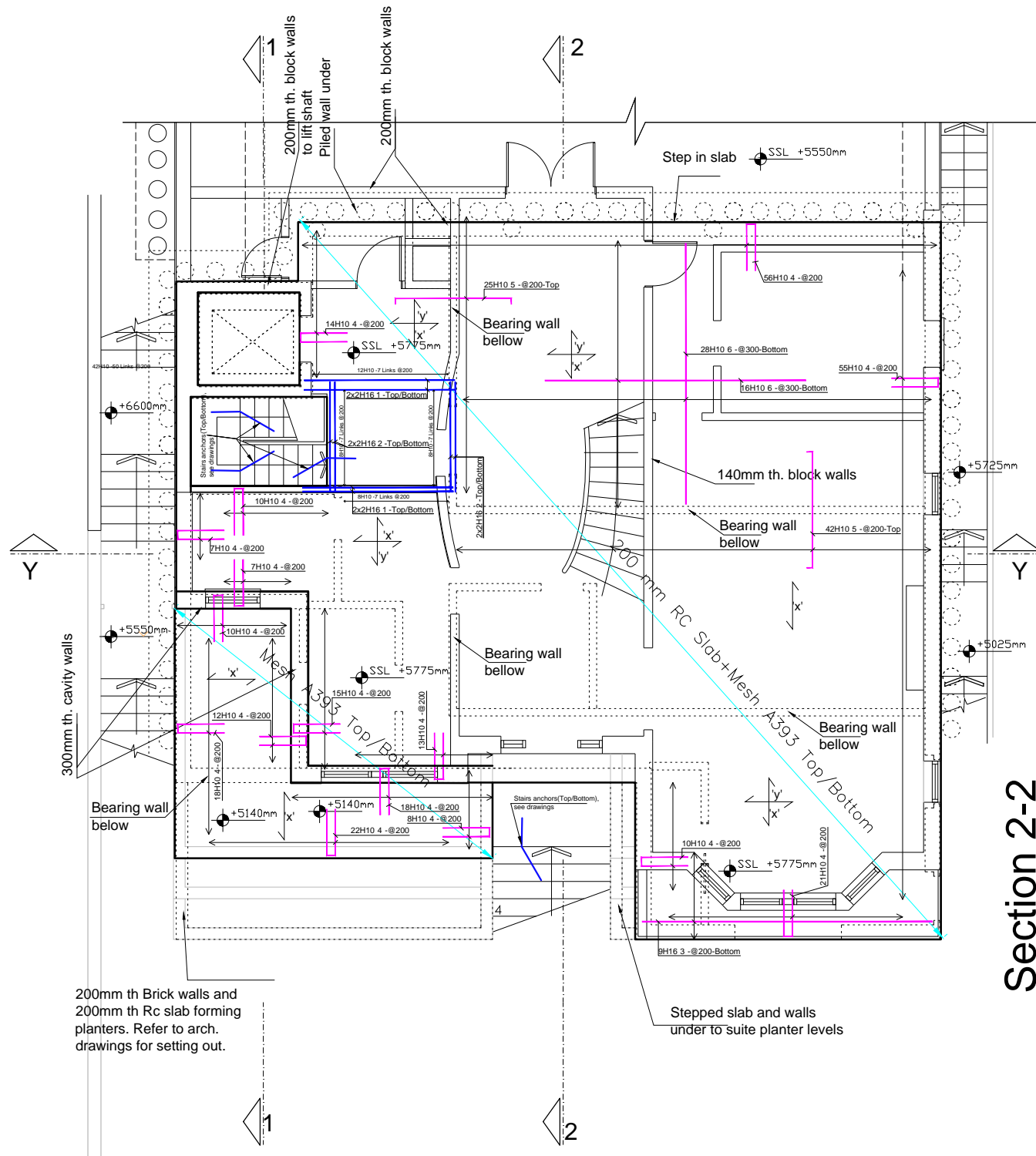
LIM ENGINEERING LTD
consulting engineers

15 Kinloch Drive, London NW9 7LL · Tel: 0208 205 1427
Fax: 0208 205 1427

Job No. **00946**
Drawing No. **RC-03**

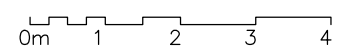
Notes:


For general notes see GN1



Section 2-2

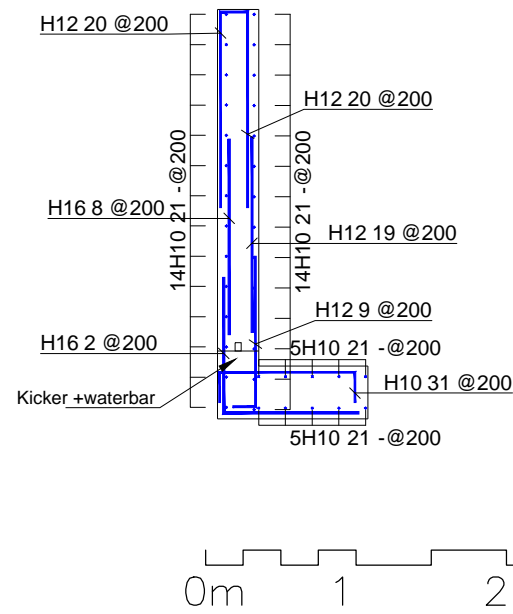
LEVEL 3 (GROUND FLOOR)



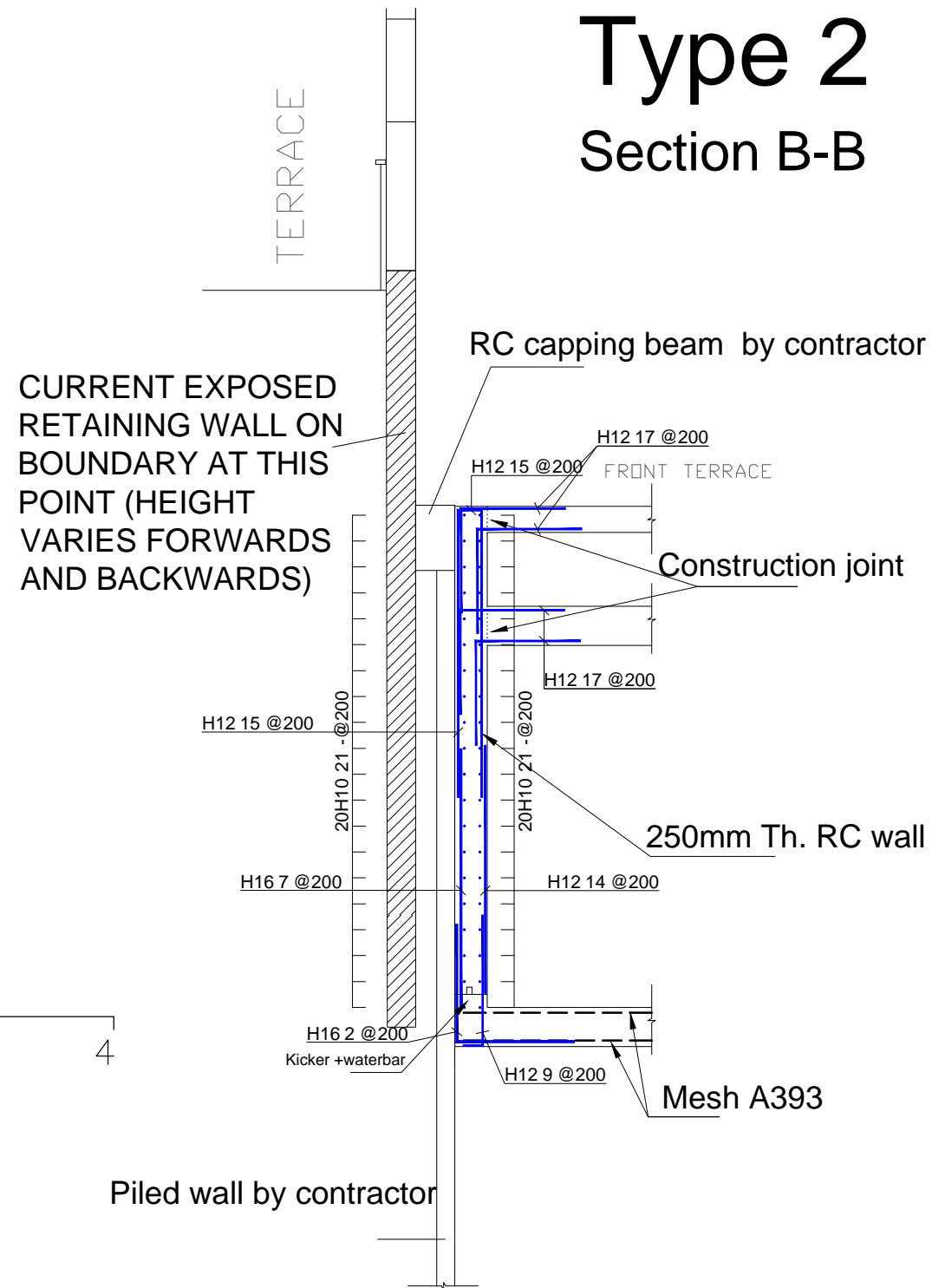
<p>Issued For</p> <p>Construction</p> <p>General Notes</p> <p>DO NOT SCALE FROM THIS DRAWING. ALL DIMENSIONS TO BE VERIFIED ON SITE BY CONTRACTOR PRIOR TO COMMENCEMENT OF ANY SHOP DRAWINGS AND ANY WORK ON SITE. REPORT ALL DISCREPANCIES TO THE ARCHITECT/ENGINEER IMMEDIATELY. THIS DRAWING IS TO BE READ IN CONJUNCTION WITH ALL RELATED ARCHITECT/ ENGINEERS DRAWINGS / DETAILS AND ALL OTHER RELEVANT INFORMATION.</p>	<p>Notes</p>	<p>Client</p> <p>-</p> <p>Project</p> <p>99 WEST HEATH RAD London NW3</p> <p>Drawing Title</p> <p>RC-Detail Ground Floor Level</p> <p>Scale</p> <p>1:100@A3</p>	<p>Client</p>  <p>LIM ENGINEERING LTD consulting engineers</p> <p>15 Kinloch Drive, London NW9 7LL - Tel: 0208 205 1427 Fax: 0208 205 1427</p> <p>Job No.</p> <p>00946</p> <p>Drawing No.</p> <p>RC-04</p>
--	--------------	--	--

Notes:
- For General notes see GN1

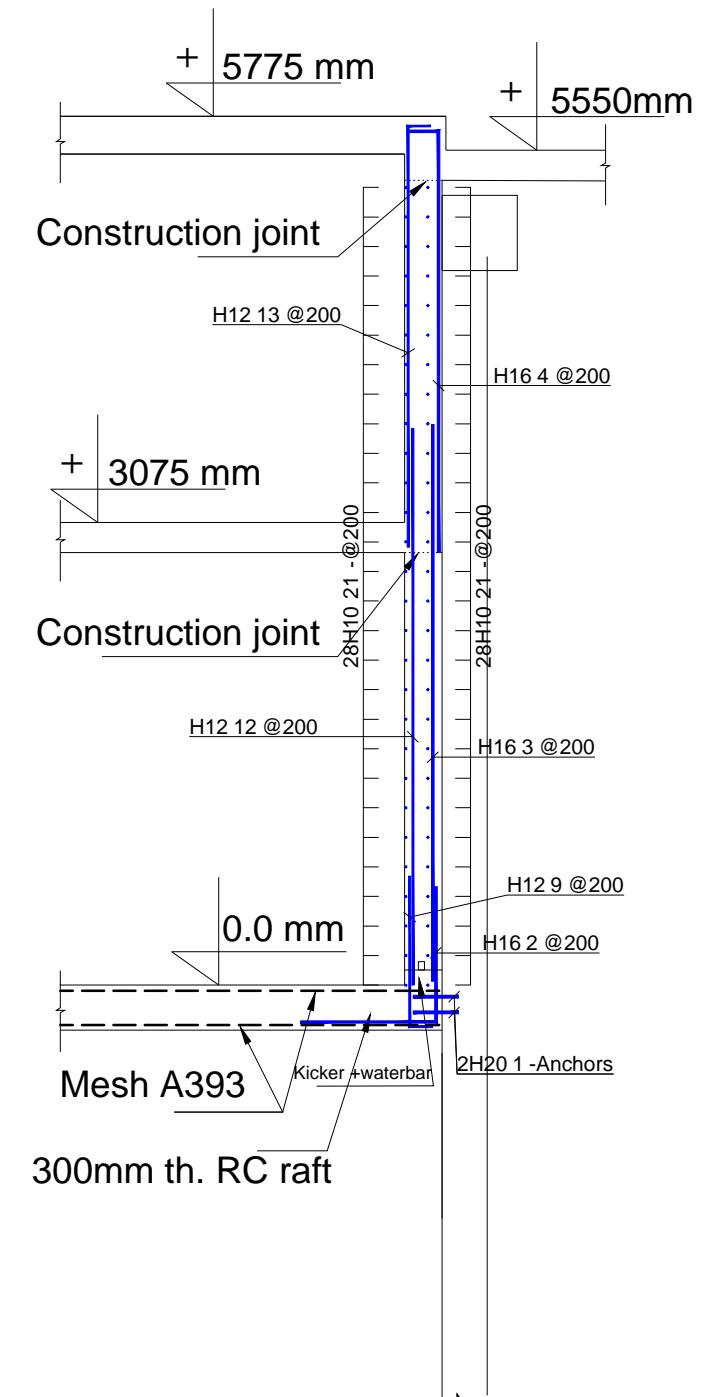
Type 1 Section A-A



Type 2 Section B-B



Type 3 Section C-C



Issued For

Notes

Construction

General Notes
DO NOT SCALE FROM THIS DRAWING.
ALL DIMENSIONS TO BE VERIFIED ON SITE BY CONTRACTOR PRIOR TO COMMENCEMENT OF ANY SHOP DRAWINGS AND ANY WORK ON SITE. REPORT ALL DISCREPANCIES TO THE ARCHITECT/ENGINEER IMMEDIATELY. THIS DRAWING IS TO BE READ IN CONJUNCTION WITH ALL RELATED ARCHITECT/ENGINEERS DRAWINGS / DETAILS AND ALL OTHER RELEVANT INFORMATION.

Client

-

Project

99 WEST HEATH RAD
LONDON NW3

Drawing Title

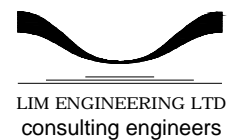
RC Details Retaining walls Type 1,2 and3

Scale

1:50 @A3

Date

Feb 2016



LIM ENGINEERING LTD
consulting engineers

15 Kinloch Drive, London, Nw9 7LL - Tel: 020 8205 1427
Fax: 020 8205 1427

Job No.

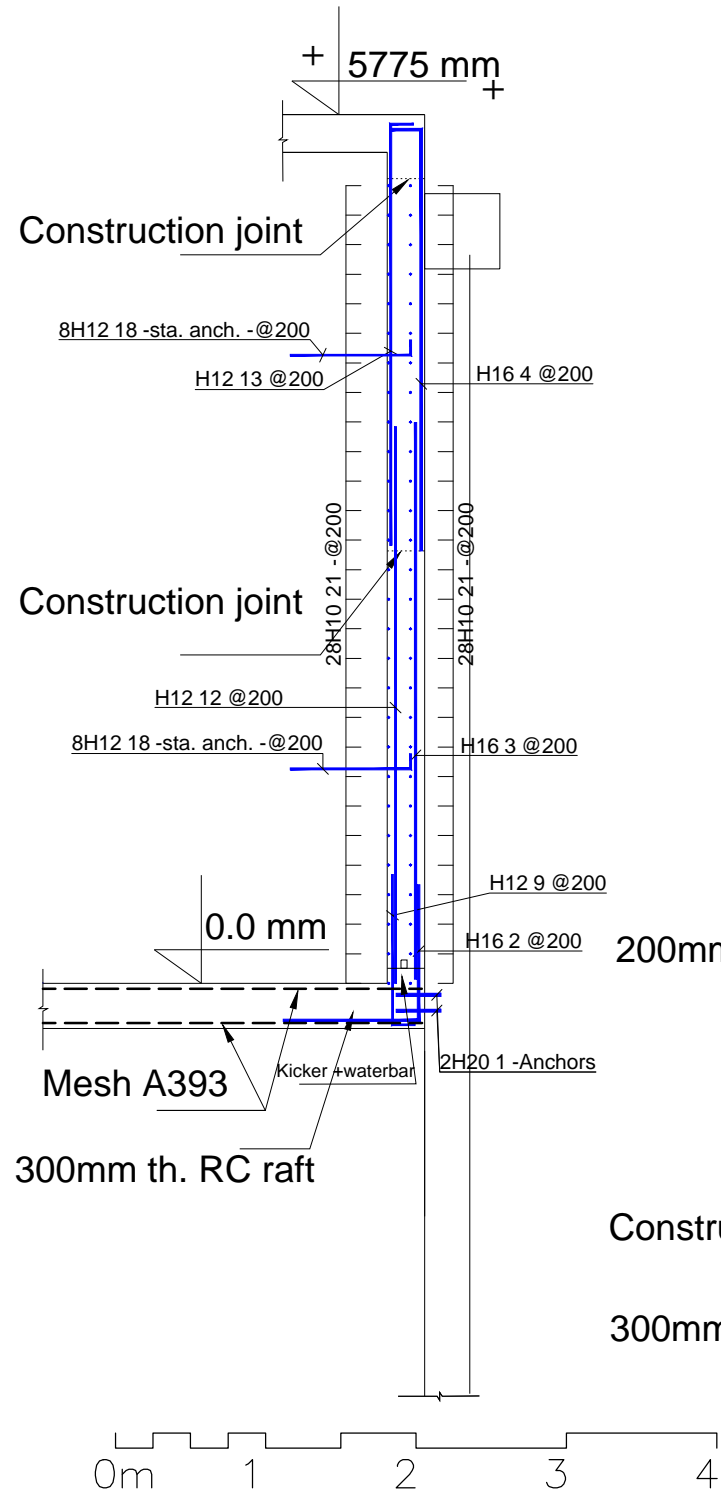
00946

Drawing No.

RC-05

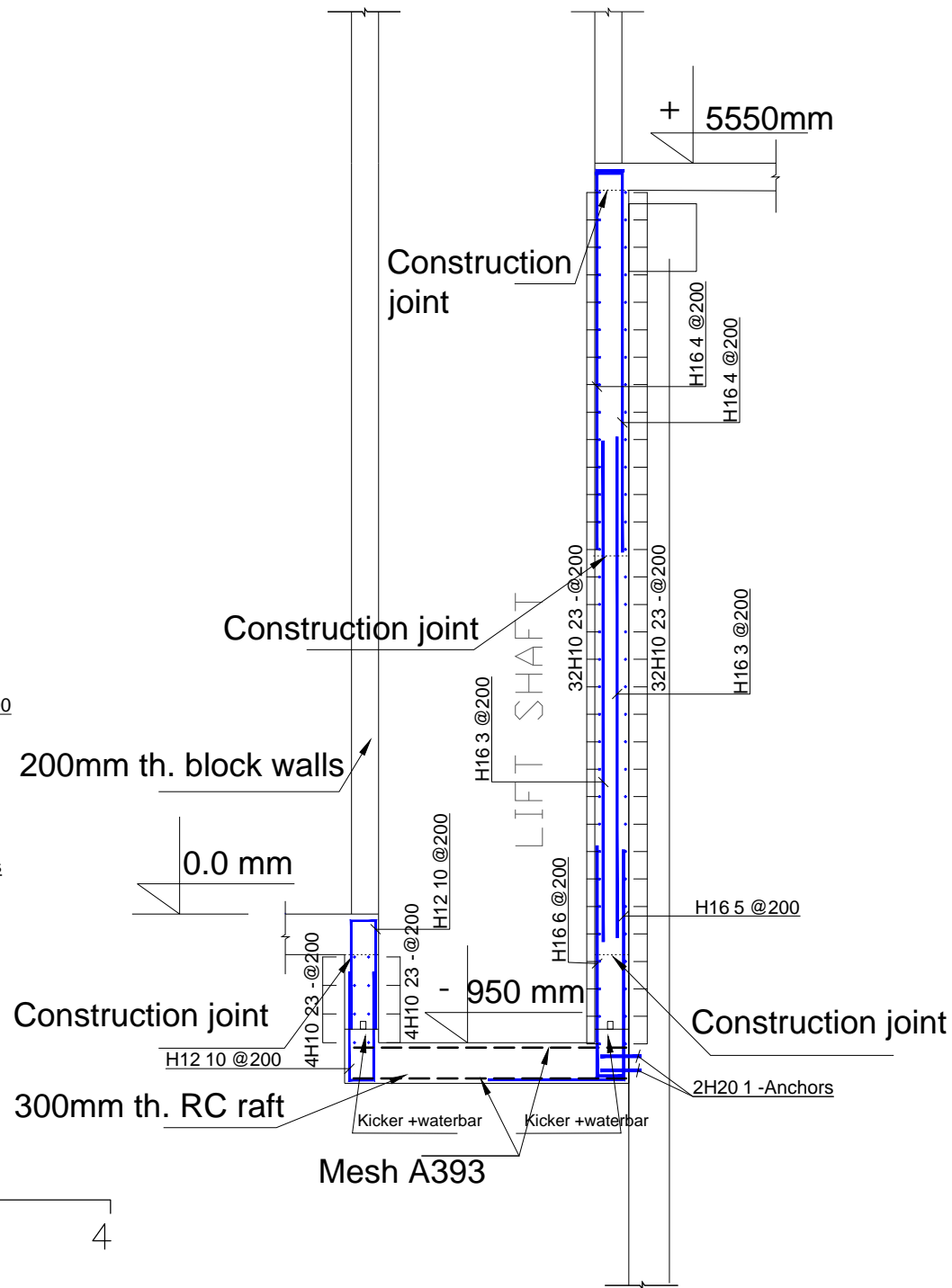
Type 3'

Section D-D



Type 3"

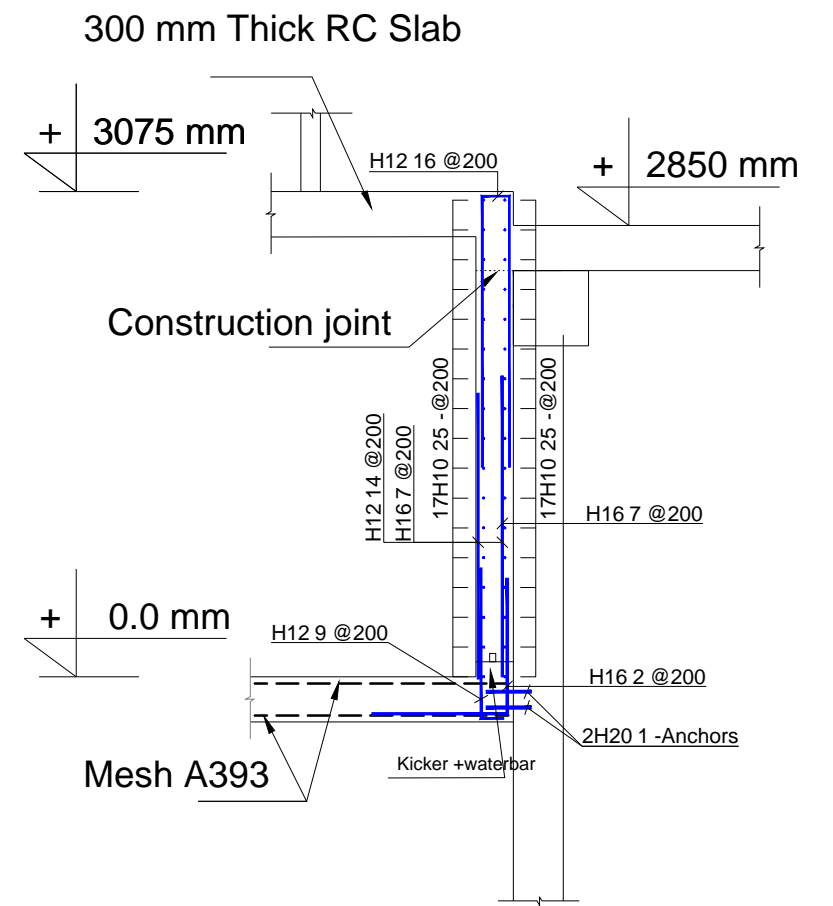
Section E-E



Type 4

Section F-F

Notes:
For General notes see GN1



Issued For

Notes

Construction

General Notes
DO NOT SCALE FROM THIS DRAWING.
ALL DIMENSIONS TO BE VERIFIED ON SITE BY CONTRACTOR PRIOR TO COMMENCEMENT OF ANY SHOP DRAWINGS AND ANY WORK ON SITE. REPORT ALL DISCREPANCIES TO THE ARCHITECT/ENGINEER IMMEDIATELY. THIS DRAWING IS TO BE READ IN CONJUNCTION WITH ALL RELATED ARCHITECT/ENGINEERS DRAWINGS / DETAILS AND ALL OTHER RELEVANT INFORMATION.

Client

-

Project

99 WEST HEATH RAD
LONDON NW3

Drawing Title

RC Details Retaining walls Type 3',3" and 4

Scale

1:50@A3

Date

Feb 2016


LIM ENGINEERING LTD
consulting engineers

15 Kinloch Drive, London, Nw9 7LL - Tel: 020 8205 1427
Fax: 020 8205 1427

Job No.

00946

Drawing No.

RC-06

Notes:
- For General notes see GN1

Type 5

Section G-G

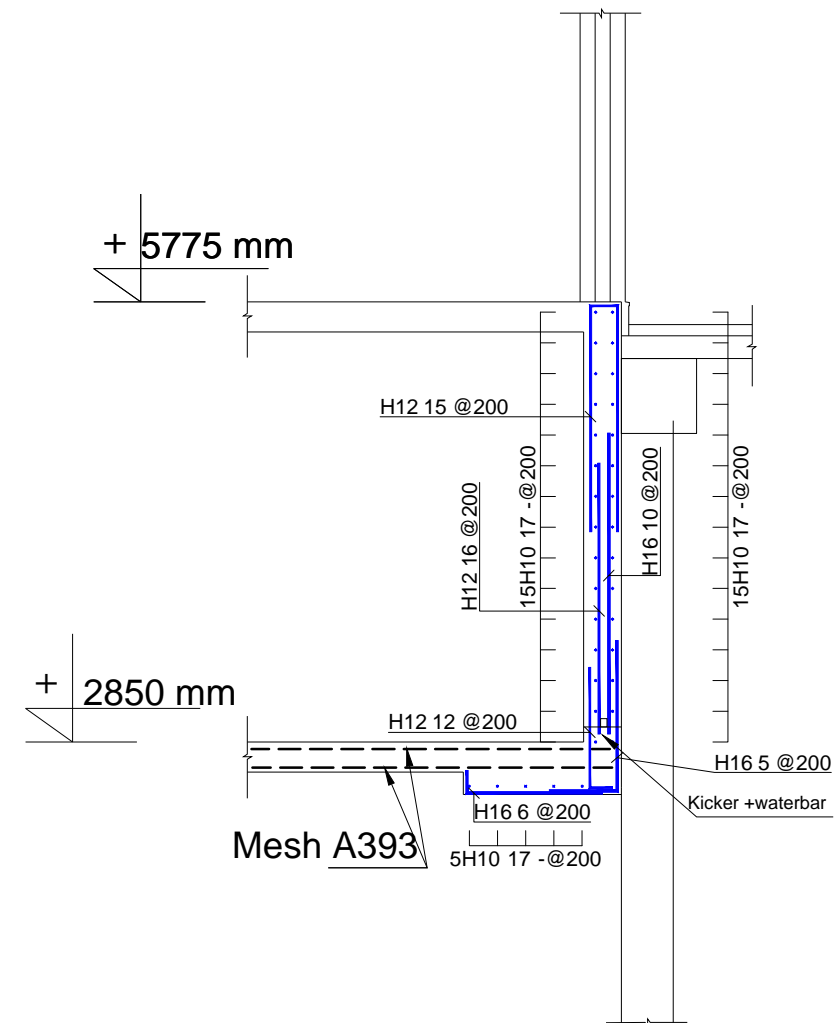
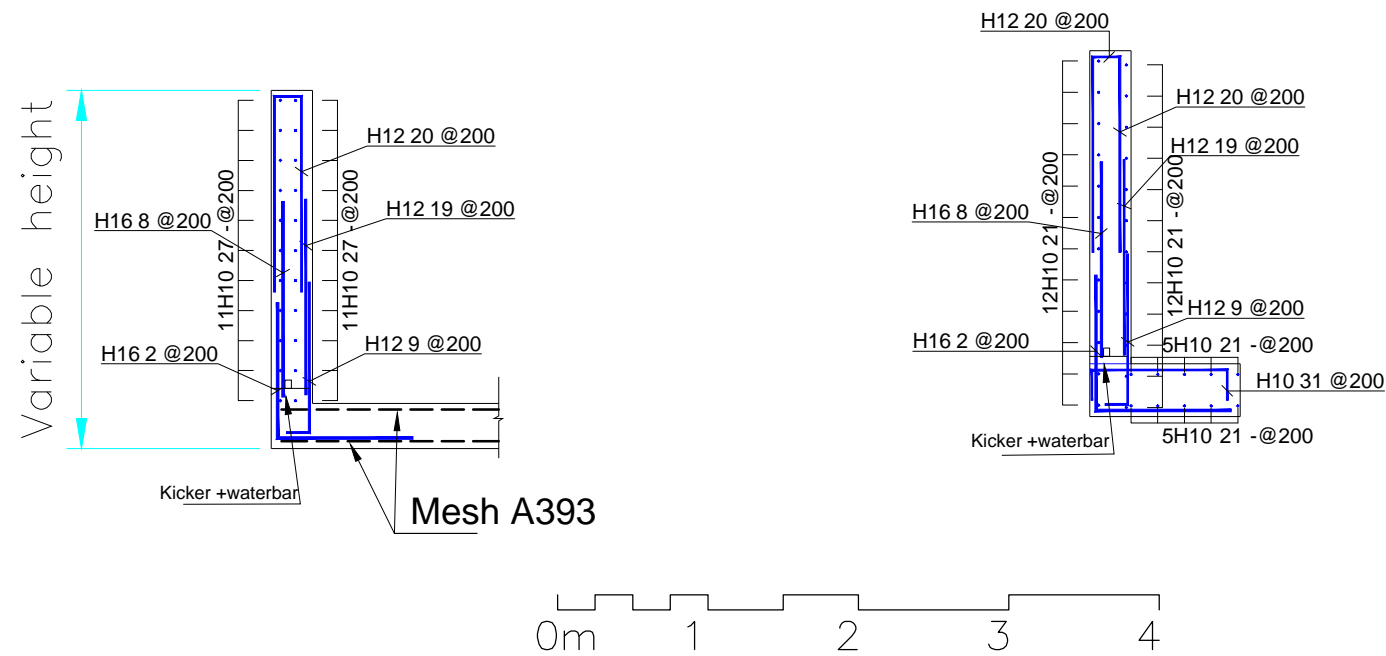
Type 5'

Section H-H

Type 6

Section I-I

Note: Wall height is variable and is following the stairs, adjust reinforcement on site.



Issued For
Construction

General Notes
DO NOT SCALE FROM THIS DRAWING.
ALL DIMENSIONS TO BE VERIFIED ON SITE BY CONTRACTOR PRIOR TO COMMENCEMENT OF ANY SHOP DRAWINGS AND ANY WORK ON SITE. REPORT ALL DISCREPANCIES TO THE ARCHITECT/ENGINEER IMMEDIATELY. THIS DRAWING IS TO BE READ IN CONJUNCTION WITH ALL RELATED ARCHITECT/ENGINEERS DRAWINGS / DETAILS AND ALL OTHER RELEVANT INFORMATION.

Notes


Client
-

Project
99 WEST HEATH RAD
LONDON NW3

Drawing Title
RC Details Retaining walls Type 5, 5' and 6

Scale
1:50 @A3

Date
Feb 2016



LIM ENGINEERING LTD
consulting engineers

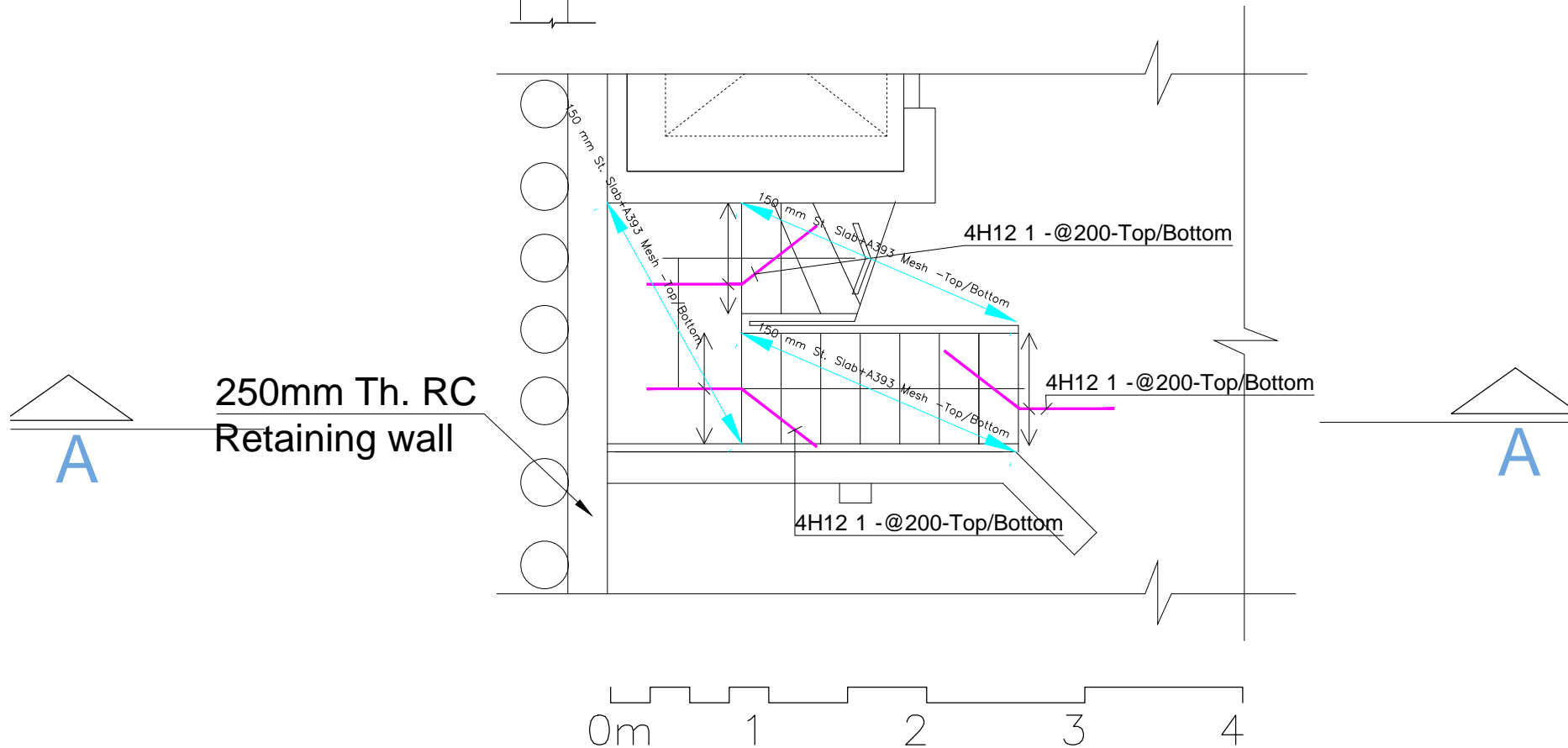
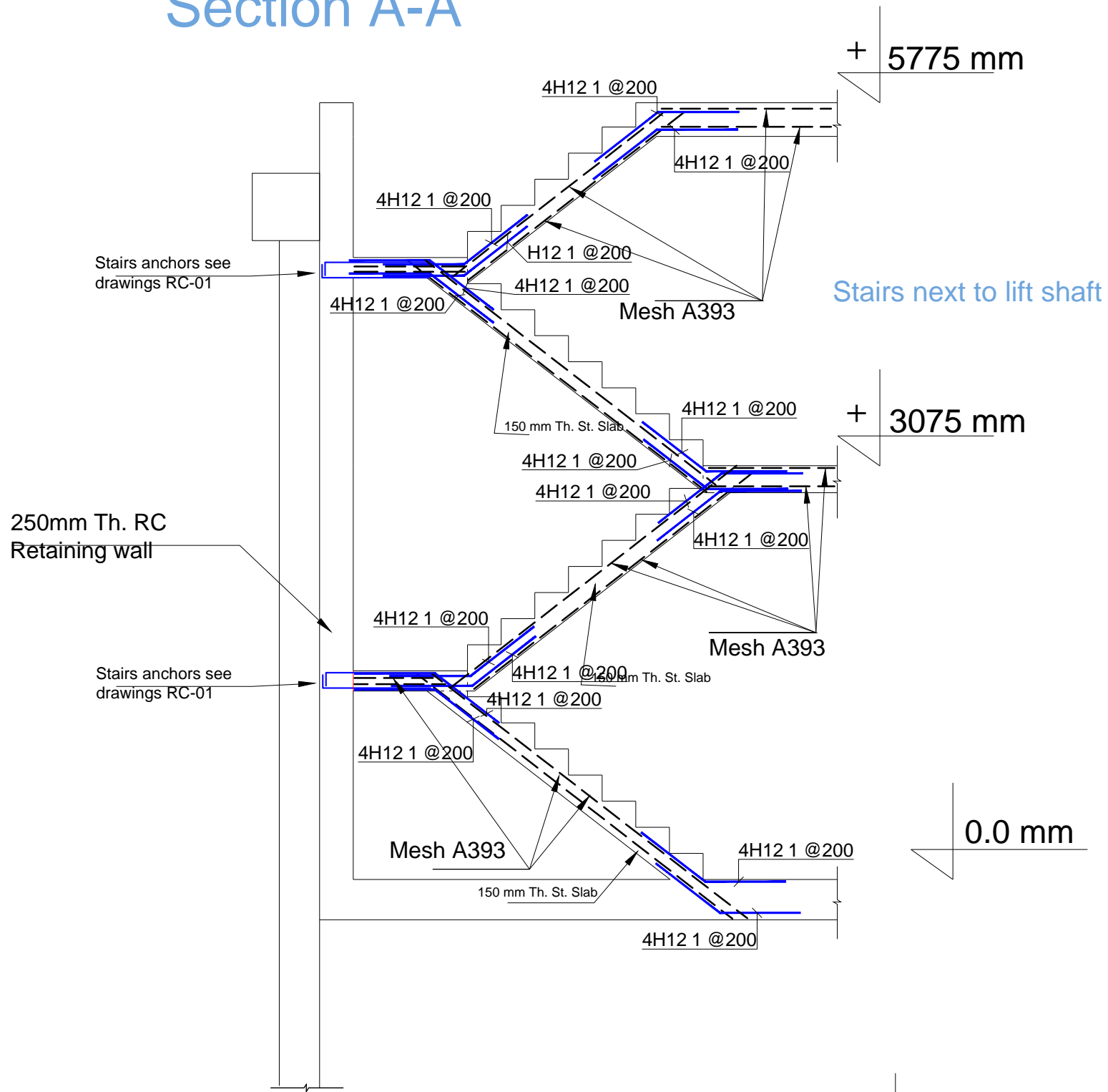
15 Kinloch Drive, London, Nw9 7LL - Tel: 020 8205 1427
Fax: 020 8205 1427

Job No. 00946
Drawing No. RC-07

Notes:

For general notes see GN1

Section A-A



Construction

General Notes

DO NOT SCALE FROM THIS DRAWING.
 ALL DIMENSIONS TO BE VERIFIED ON SITE BY CONTRACTOR PRIOR TO COMMENCEMENT OF ANY SHOP DRAWINGS AND ANY WORK ON SITE.
 REPORT ALL DISCREPANCIES TO THE ARCHITECT/ENGINEER IMMEDIATELY.
 THIS DRAWING IS TO BE READ IN CONJUNCTION WITH ALL RELATED ARCHITECT/ ENGINEERS DRAWINGS / DETAILS AND ALL OTHER RELEVANT INFORMATION.

Notes

Client

-

Project


99 WEST HEATH RAD
 London NW3

Drawing Title

RC-Detail-Stairs next to Lift Shaft

Scale **Date**

1:40@A3 Feb.2016



LIM ENGINEERING LTD
 consulting engineers

15 Kinloch Drive, London NW9 7LL · Tel: 0208 205 1427
 Fax: 0208 205 1427

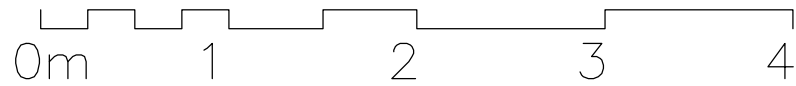
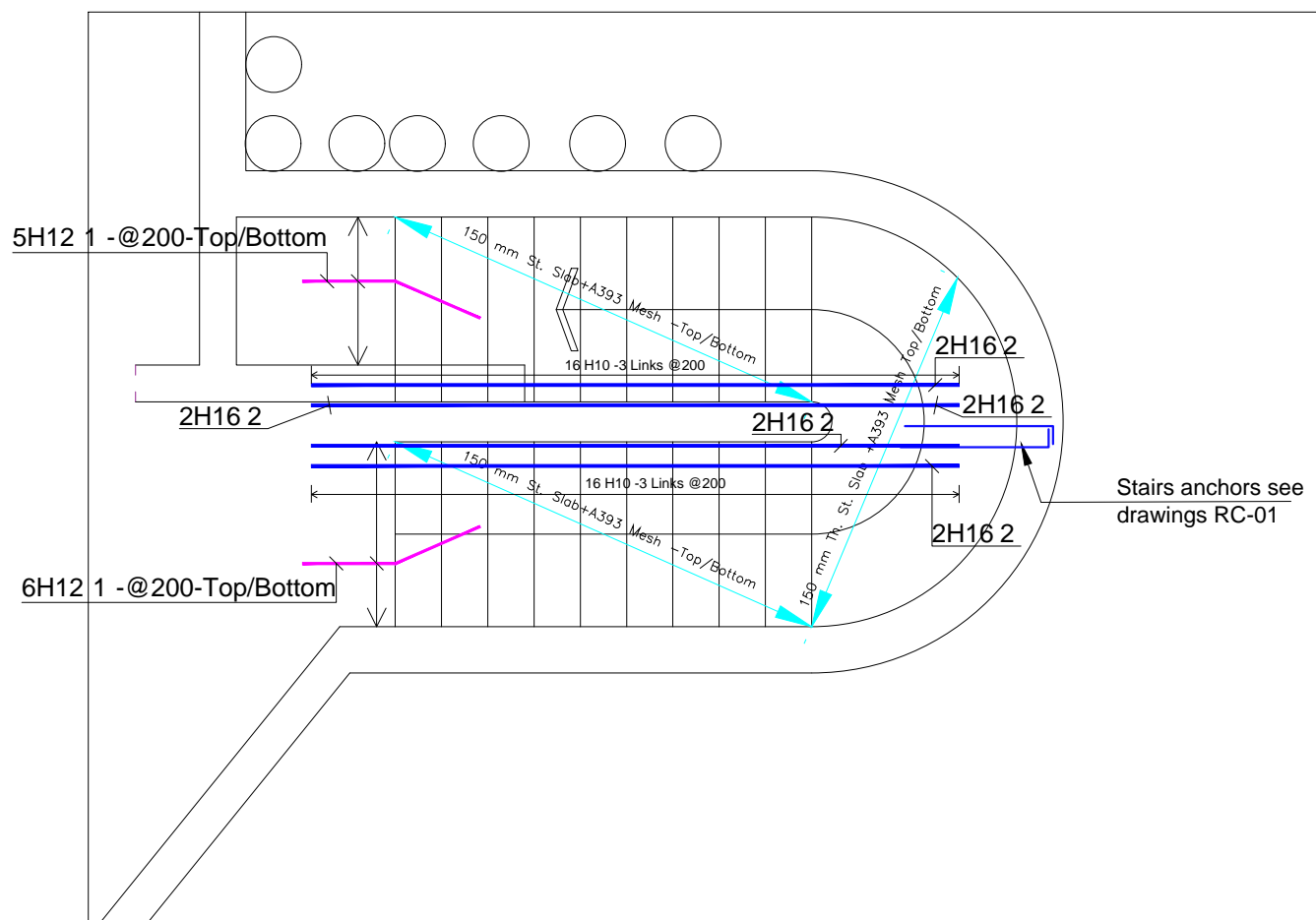
Job No. **Drawing No.**

00946 RC-08

Notes:

For general notes see GN1

Circle Stairs



Issued For
Construction

General Notes
DO NOT SCALE FROM THIS DRAWING.
ALL DIMENSIONS TO BE VERIFIED ON SITE BY CONTRACTOR PRIOR TO COMMENCEMENT OF ANY SHOP DRAWINGS AND ANY WORK ON SITE. REPORT ALL DISCREPANCIES TO THE ARCHITECT/ENGINEER IMMEDIATELY. THIS DRAWING IS TO BE READ IN CONJUNCTION WITH ALL RELATED ARCHITECT/ ENGINEERS DRAWINGS / DETAILS AND ALL OTHER RELEVANT INFORMATION.

Notes


Client
-

Project
99 WEST HEATH RAD
London NW3

Drawing Title
RC-Detail-Circle Stairs

Scale
1:100@A3

Date
Feb.2016


LIM ENGINEERING LTD
consulting engineers

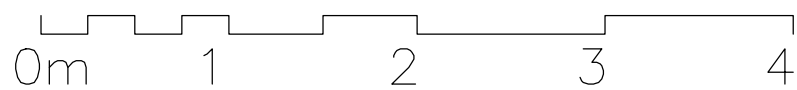
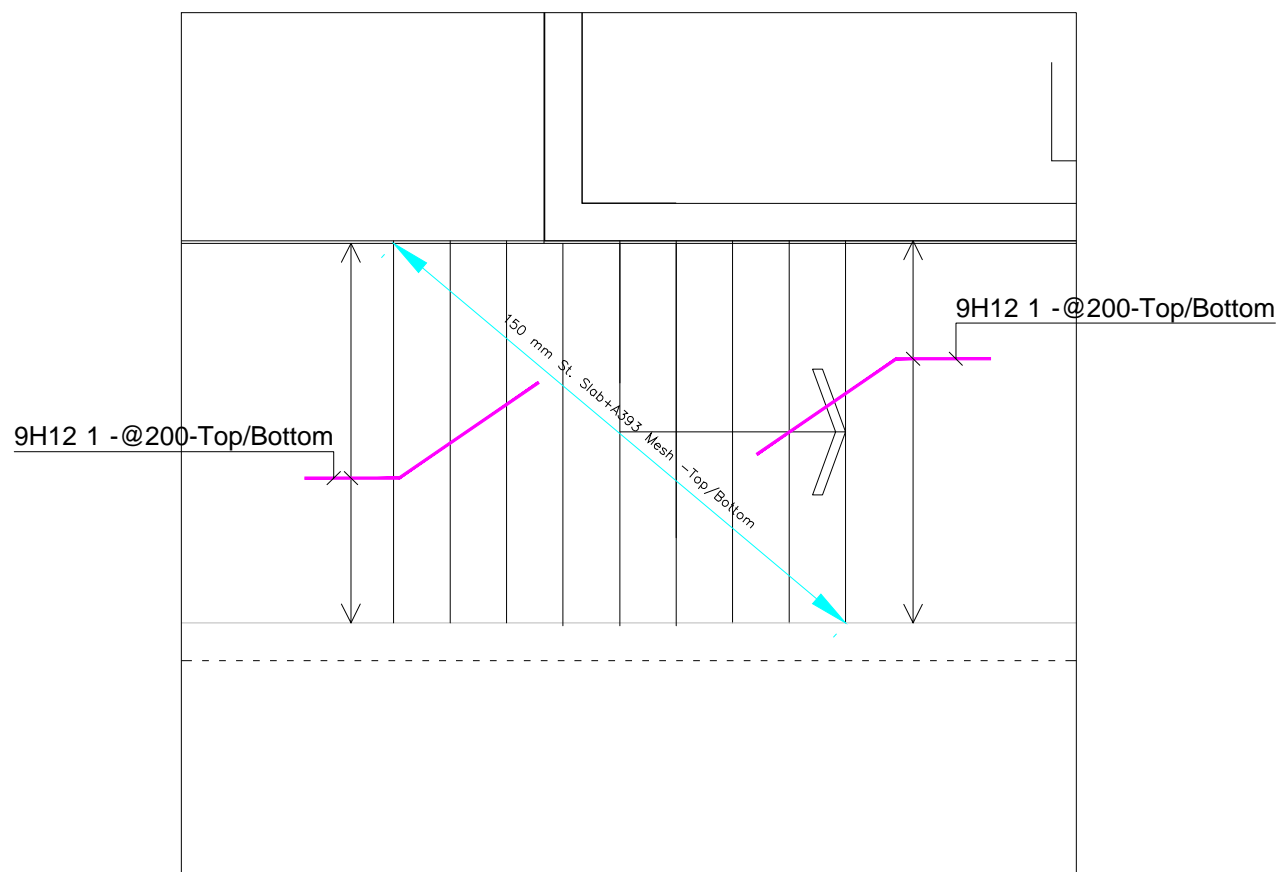
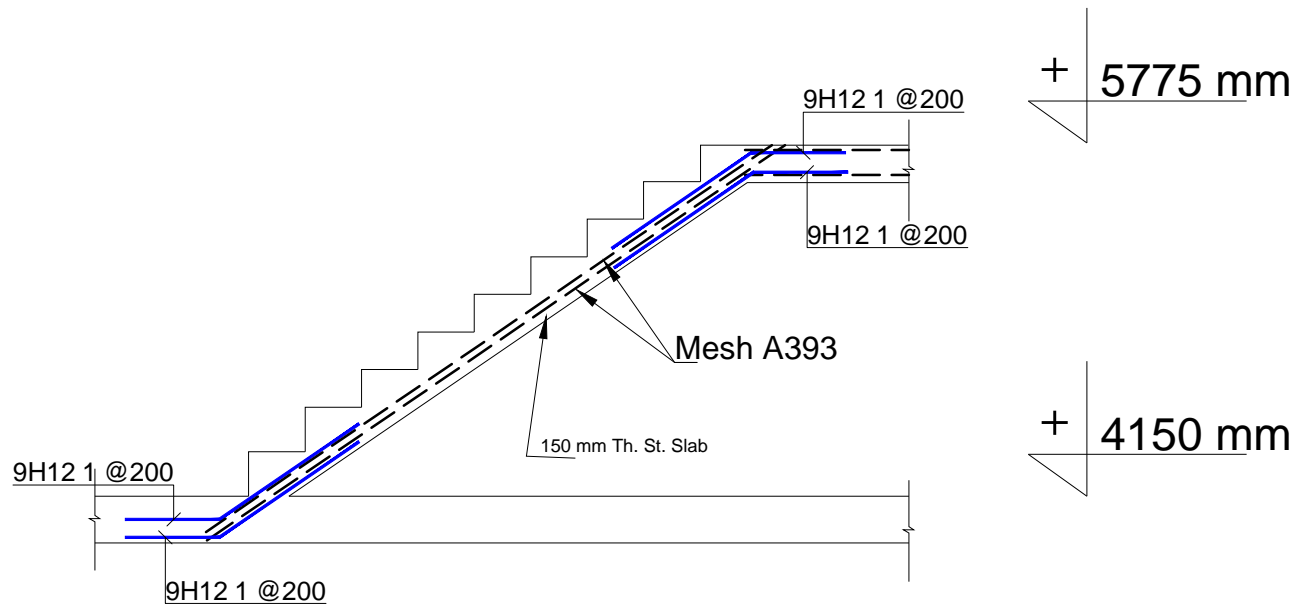
15 Kinloch Drive, London NW9 7LL · Tel: 0208 205 1427
Fax: 0208 205 1427

Job No. 00946
Drawing No. RC-09

Notes:

For general notes see GN1

RC Stairs from Basement to ground level



Construction

General Notes

DO NOT SCALE FROM THIS DRAWING.
ALL DIMENSIONS TO BE VERIFIED ON SITE BY CONTRACTOR PRIOR TO COMMENCEMENT OF ANY SHOP DRAWINGS AND ANY WORK ON SITE. REPORT ALL DISCREPANCIES TO THE ARCHITECT/ENGINEER IMMEDIATELY. THIS DRAWING IS TO BE READ IN CONJUNCTION WITH ALL RELATED ARCHITECT/ENGINEERS DRAWINGS / DETAILS AND ALL OTHER RELEVANT INFORMATION.

Notes

Client

-

Project


99 WEST HEATH RAD
London NW3

Drawing Title

RC-Detail-Stairs from Bas.. to Gro. L

Scale **Date**

1:100@A3 Feb.2016



LIM ENGINEERING LTD
consulting engineers

15 Kinloch Drive, London NW9 7LL · Tel: 0208 205 1427
Fax: 0208 205 1427

Job No. **Drawing No.**

00946 RC-10



LIM ENGINEERING LTD
consulting engineers

SITE REFERENCE: **99WestHeath Road, London NW3**

JOB. No. **00946**

DATE: **February, 2016**

BENDING SCHEDULE FOR RC RAFT (Pavement level) AND RETAINING WALLS
(This schedule conforms to BS 8666:2005)

SITUATION OR MEMEBER	BAR MARK	TYPE AND SIZE	NO. OF MEMBERS	NO. IN EACH	TOTAL NO.	LENGTH OF EACH BAR (mm)	SHAPE CODE	A (mm)	B (mm)	C (mm)	D (mm)	R (mm)
RC Raft (Pavement level), and retaining walls (Type 1, 2, 3, 3', 3'', 4, 5, and 5')	1	20	1	160	160	300	00	300				
	2	16	1	293	293	1800	12	900	900			
	3	16	1	73	73	3700	00	3700				
	4	16	1	73	73	3000	12	200	2800			
	5	16	1	20	20	2700	12	1000	1700			
	6	16	1	19	19	1900	12	200	1700			
	7	16	1	141	141	2000	00	2000				
	8	16	1	114	114	1300	00	1300				
	9	12	1	289	289	1150	12	150	1000			
	10	12	1	38	38	1780	21	800	180	800		
	11	12	1	24	24	4500	00	4500				
	12	12	1	34	34	3700	00	3700				
	13	12	1	34	34	2950	12	150	2800			
	14	12	1	144	144	1900	00	1900				
	15	12	1	42	42	4580	21	2200	180	2200		
	16	12	1	104	104	3780	21	1800	180	1800		
	17	12	1	168	168	1600	12	800	800			
	18	12	1	34	34	900	12	100	800			
	19	12	1	114	114	1300	00	1300				
	20	12	1	114	114	2780	21	1300	180	1300		
	21	10	1	332	332	3700	00	3700				
	22	10	1	40	40	1200	00	1200				
	23	10	1	184	184	2200	00	2200				
	24	10	1	52	52	2500	12	200	2300			
	25	10	1	102	102	4400	00	4400				



DRG: RC-01, RC-02, RC-03

SCHED. 01

REV

LIM ENGINEERING LTD
consulting engineers

SITE REFERENCE: 99WestHeath Road, London NW3

JOB. No. 00946

DATE: February, 2016

BENDING SCHEDULE FOR RC RAFT (Pavement level) AND RETAINING WALLS
(This schedule conforms to BS 8666:2005)

SITUATION OR MEMEBER	BAR MARK	TYPE AND SIZE	NO. OF MEMBERS	NO. IN EACH	TOTAL NO.	LENGTH OF EACH BAR (mm)	SHAPE CODE	A (mm)	B (mm)	C (mm)	D (mm)	R (mm)
RC Raft (Pavement level), and retaining walls (Type 1, 2, 3, 3', 3'', 4, 5, and 5')	26	10	1	44	44	1650	00	1650				
	27	10	1	24	24	3000	00	3000				
	28	10	1	24	24	3200	00	3200				
	29	10	1	48	48	1100	00	1100				
	30	10	1	42	42	3100	21	1800	400	900		
	31	10	1	72	72	1300	21	200	900	200		
	32	10	1	124	124	1300	12	650	650			
	33	10	1	14	14	2000	67	2000	1745	410		
	34	10	1	14	14	2290	67	2290	2015	460		
	Mesh A393					270 m ²						



LIM ENGINEERING LTD
consulting engineers

SITE REFERENCE: 99West Heath Road, London NW3

JOB. No. 00946

DATE: Aug., 2016

BENDING SCHEDULE FOR TWO RC SLABS AND RC RAFT (Basement level) RETAINING WALL (Type 6)
(This schedule conforms to BS 8666:2005)

SITUATION OR MEMEBER	BAR MARK	TYPE AND SIZE	NO. OF MEMBERS	NO. IN EACH	TOTAL NO.	LENGTH OF EACH BAR (mm)	SHAPE CODE	A (mm)	B (mm)	C (mm)	D (mm)	R (mm)
RC Slabs and RC Raft (Basement level), and retaining wall (Type 6)	1	16	1	12	12	4800	00	4800				
	2	16	2	4	4	4300	00	4300				
	3	16	1	4	4	2800	00	2800				
	4	16	1	8	8	2500	00	2500				
	5	16	1	104	104	1450	12	450	1000			
	6	16	1	73	73	1050	12	150	900			
	7	16	1	4	4	1600	00	1600				
	8	16	1	16	16	5500	00	5500				
	9	16	1	13	13	3200	00	3200				
	10	16	1	104	104	2000	00	2000				
	11	16	1	13	13	4000	00	4000				
	12	12	1	101	101	950	12	150	800			
	13	12	1	4	4	5500	00	5500				
	14	12	1	4	4	3200	00	3200				
	15	12	1	104	104	3180	21	1500	180	1500		
	16	12	1	101	101	1800	00	1800				
	17	10	1	140	140	3700	00	3700				
	18	10	1	35	35	2200	00	2200				
	19	10	1	76	76	4600	00	4600				
	20	10	1	124	124	1850	21	800	250	800		
	21	10	1	82	82	1700	51	200	550	100	100	
	22	10	1	152	152	1550	21	700	150	700		
	23	10	1	49	49	2200	21	100	2000	100		
	24	10	1	82	82	1000	51	150	250	100		
	25	10	1	153	153	1000	51	250	150	100		



DRG: RC-01, RC-02, RC-03

SCHED. 02 REV-A

LIM ENGINEERING LTD
consulting engineers

SITE REFERENCE: 99WestHeath Road, London NW3

JOB. No. 00946

DATE: Augs., 2016

BENDING SCHEDULE FOR TWO RC SLABS AND RC RAFT (Basement level) RETAINING WALL (Type 6)
(This schedule conforms to BS 8666:2005)

SITUATION OR MEMEBER	BAR MARK	TYPE AND SIZE	NO. OF MEMBERS	NO. IN EACH	TOTAL NO.	LENGTH OF EACH BAR (mm)	SHAPE CODE	A (mm)	B (mm)	C (mm)	D (mm)	R (mm)
RC Slabs and RC Raft (Basement level), and retaining wall (Type 6)	26	10	1	10	10	3250	21	1500	250	1500		
	27	10	1	45	45	1500	12	600	900			
	28	10	1	56	56	2150	21	1000	150	1000		
	29	16	1	6	6	5000	00	5000				
	30	16	1	6	6	3700	00	3700				
	31	12	1	2	2	5000	00	5000				
	32	12	1	2	2	3700	00	3700				
	33	16	1	1	1	2000	00	200				
	34	10	1	44	44	1800	51	400	400	100		
	35	10	1	41	41	1750	21	800	150	800		
Mesh A393							430 m²					



DRG: RC-04

SCHED. 03

REV

LIM ENGINEERING LTD
consulting engineers

SITE REFERENCE: 99WestHeath Road, London NW3

JOB. No. 00946

DATE: February, 2016

BENDING SCHEDULE FOR RC GROUND SLABS
(This schedule conforms to BS 8666:2005)

SITUATION OR MEMEBER	BAR MARK	TYPE AND SIZE	NO. OF MEMBERS	NO. IN EACH	TOTAL NO.	LENGTH OF EACH BAR (mm)	SHAPE CODE	A (mm)	B (mm)	C (mm)	D (mm)	R (mm)
RC Ground Slabs(Two different levels)	1	16	1	8	8	2600	00	2600				
	2	16	1	8	8	1900	00	1900				
	3	16	1	9	9	5000	00	5000				
	4	10	1	296	296	1750	21	800	150	800		
	5	10	1	67	67	2200	21	100	2000	100		
	6	10	1	44	44	4500	00	4500				
	7	10	1	36	36	800	51	150	150	100		
Mesh A393							315 m²					



DRG: RC-08,

SCHED. 04

REV

LIM ENGINEERING LTD
consulting engineers

SITE REFERENCE: 99WestHeath Road, London NW3

JOB. No. 00946

DATE: February, 2016

BENDING SCHEDULE FOR RC STAIRS NEXT TO LIFT SHAFT
(This schedule conforms to BS 8666:2005)

SITUATION OR MEMEBER	BAR MARK	TYPE AND SIZE	NO. OF MEMBERS	NO. IN EACH	TOTAL NO.	LENGTH OF EACH BAR (mm)	SHAPE CODE	A (mm)	B (mm)	C (mm)	D (mm)	R (mm)
RC Stairs next to lift shaft	1	12	1	64	64	1200	15	600	370	600		
MESH A393						20 m²						



DRG: RC-09,

SCHED. 05

REV

LIM ENGINEERING LTD
consulting engineers

SITE REFERENCE: 99WestHeath Road, London NW3

JOB. No. 00946

DATE: February, 2016

BENDING SCHEDULE FOR RC CIRCLE STAIRS
(This schedule conforms to BS 8666:2005)

SITUATION OR MEMEBER	BAR MARK	TYPE AND SIZE	NO. OF MEMBERS	NO. IN EACH	TOTAL NO.	LENGTH OF EACH BAR (mm)	SHAPE CODE	A (mm)	B (mm)	C (mm)	D (mm)	R (mm)
RC Circle stairs	1	12	1	22	22	1000	15	500	200	500		
	2	16	1	8	8	3500	00	3500				
	3	10	1	32	32	700	51	200	100	50	50	
MESH A393						15 m²						



DRG: RC-10,

SCHED. 06

REV

LIM ENGINEERING LTD
consulting engineers

SITE REFERENCE: **99WestHeath Road, London NW3**

JOB. No. **00946**

DATE: **February, 2016**

BENDING SCHEDULE FOR RC STAIRS(from basement to ground level)
(This schedule conforms to BS 8666:2005)

SITUATION OR MEMEBER	BAR MARK	TYPE AND SIZE	NO. OF MEMBERS	NO. IN EACH	TOTAL NO.	LENGTH OF EACH BAR (mm)	SHAPE CODE	A (mm)	B (mm)	C (mm)	D (mm)	R (mm)
RC Stairs	1	12	1	18	18	1400	15	900	500			
MESH A393						15 m²						